



Shasta

LAKE SHORE RETREAT
www.shastalakeshoreretreat.com



Tour of Retreat #1

Lakefront Vacation Rental
Shasta Lake, California

Updated: May 9, 2026

Please also see Part 1, the Overview Document that goes with this at:
<https://shastalakeshoreretreat.com/Shasta-Lakeshore-Retreat-Info>



RETREAT #1 (~1500 Square Feet)

- ◆ Lakefront
- ◆ Sleeps up to 10 (2 Queen Beds, 2 Twins, 4 Twin Rollaway Beds), Adults 9 Max
- ◆ 3 Bedroom, 2 Full Bathrooms (both common area access), Media/Family Room, Modern Kitchen/Main Room with Big Window Views!
- ◆ Two Large Decks, Hot Tub, Heat Lamp, Gas Fire Pit
Cozy Wood Pellet Fire Stove for those cool winter nights





LAKESHORE RETREAT

TOUR OF RETREAT #1:

- ◆ Top Floor (main floor, driveway level)



- ◆ Kitchen/Main Room

- Modern Kitchen, dining table, sofa, 55" Smart 4K TV, pellet fire stove for heat, big window views, high wood ceiling, ceiling fans
- Bar stools, local photos, and access to main deck.



- ◆ Master Bedroom (Bedroom #1)

- Queen bed, dresser, nightstand, high wood ceilings, ceiling fan, closet, wood shutters, local photos, and door to bathroom.

- ◆ Bathroom #1

- Full bath with tub shower with doors to kitchen/main room and master bedroom #1



◆ Top Deck

- ~850 Square Foot wrap around deck with great views of lake, marina, and mountains. Includes patio table, chairs, bar counter, gas fire pit, heat lamp and gas BBQ. See web site for photos when lake is lower.



LAKE SHORE RETREAT

- ◆ Lower Floor (steep stairs down)



- ◆ Family/Media/Kids Area
- ◆ Pull out sleeper sofa, two large recliners, coffee table, ceiling fan, window and slider view out to deck and views of lake, 58" Smart 4K TV, & photos of the lake and boating.



Bedroom #2

- Queen bed, dresser, nightstand, closet with direct bathroom access and across the hall from the 2nd bathroom.



LAKESHORE RETREAT



- ◆ Bedroom #3
 - Two Twin beds, window facing deck/lake, dresser, nightstand, closet and photos of wildlife in area
- ◆ Bathroom #2
 - Sink, toilet, and walk-in shower. Access from common area.

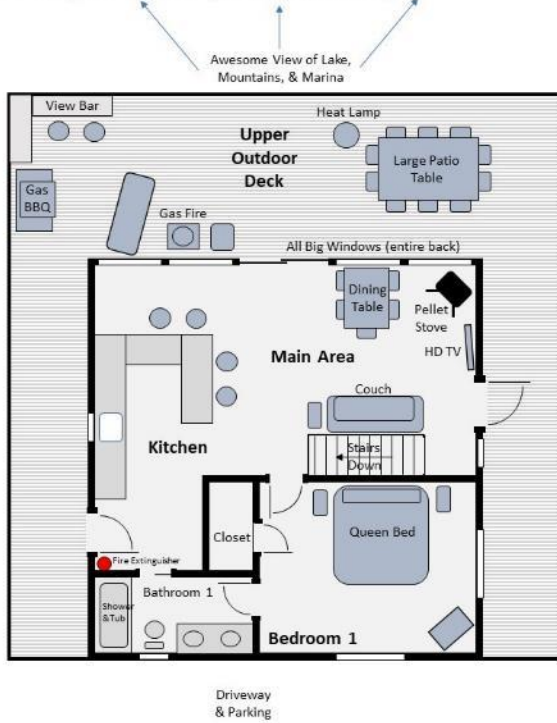


- Lower Deck
 - Patio table, chairs, cold water outdoor shower, hot tub/spa, kayaks, and paddle boards.

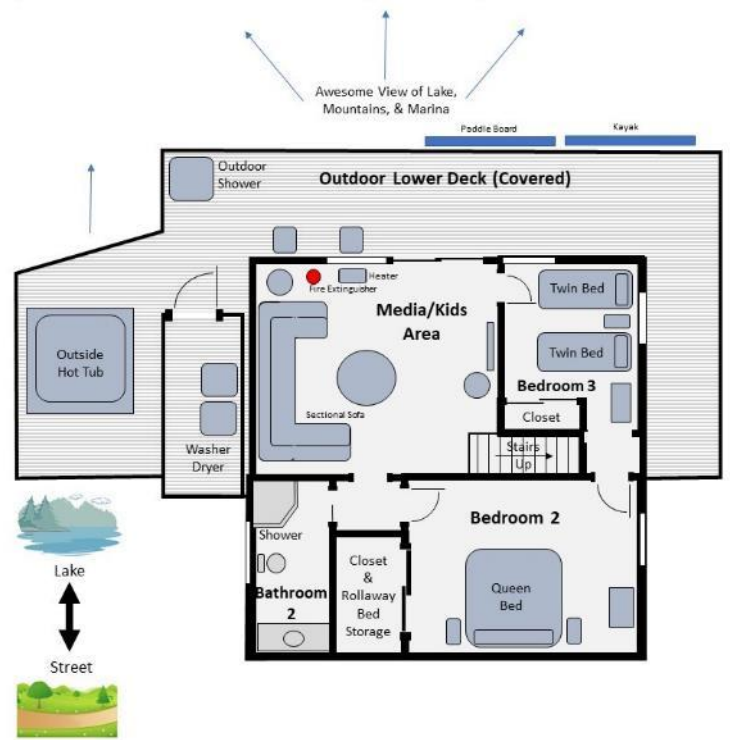


LAKESHORE RETREAT

Retreat #1: Upper Floor (Street Level)



Retreat #1: Lower Floor (Level 1)



Shasta

7 Awesome Lake Homes

"The Best at Shasta Lake"

600+ FIVE STAR REVIEWS



LAKESHORE RETREAT
www.shastalakeshoreretreat.com



Retreat	Type	Square Feet	Sleeps	Bedrooms/Baths
#1	Lakefront	~1500	10	3/2
#2	Lakefront	~2000	14	4/2
#3	Lakefront	~2200	14	5/2
#4	Lakefront	~1850	12	4/3
#5	Lakeview	~1300	10	3/2
#9	Lakeview	~1300	8	3/2
#10	Lakefront	~2200	14	4/3+



Shasta
LAKESHORE RETREAT
www.shastalakeshoreretreat.com

All 7 Homes on the most popular small street in Sugarloaf area of Lakehead
Retreat 6 & 7: Only a 5 Min Walk



Shasta LAKESHORE RETREAT



Shasta
 LAKESHORE RETREAT
 www.shastalakeshoreretreat.com

Daisy Lane Retreats
 (Sugarloaf South)
 Lakehead, CA

Shasta Area Information

Shasta Lakeshore Retreat Website

Availability Calendar

Reservations

Reservations Available on All Three Platforms

- Click on Any Logo -



LAKE SHORE RETREAT

Retreat	Item	Retreat #1
1	~ Sq. Footage & # of Levels	~1500, 2 Floors, Lakefront
2	MAX. Sleep Number	10 (max # of adults=9)
3	# Bedrooms + Lofts	3
4	Reservations/Stays	Now/Now
5	Bedroom 1 (Master)	Queen, Main Parking Level Floor, Dresser, Nightstand, Ceiling Fan, Closet, BR1 Door
6	Bedroom 2	Queen, Dresser, Nightstand, Closet, Stairs3, BR Door
7	Bedroom 3	2 Twins, Dresser, Nightstand, Closet, Stairs3, LV
10	Extra Room	Media Room, Large Sectional Sofa (New), Coffee Table, HDTV, Blue-Ray/DVD/Netflix, LV, Slider to Deck
11	Family Area (off Kitchen)	Sofa (New), Coffee Table, Smart TV, Pellet Stove, LV, Main Parking Level Floor, Slider to deck
12	Extra Bedding	3 Roll-a-way Twins10, Queen Air Mattress.
13	# of Full Bathrooms	2
14	Bathroom 1	Main Floor, Tub/shower, sink, toilet, Door to Common Area & BD1
15	Bathroom 2	Lower Fl. via Stairs, Shower, Toilet, Sink, Entry-Common Area
18	Kitchen	Refrig/Freezer w/Ice maker, Stove, Oven, Microwave, Dishwasher, Bar Counter, LV
19	Refrigerator/Freezers	1 Large
20	Fireplace or Stove	Indoor Pellet Stove9, Main Floor
21	Cooling	Central Air, Ceiling Fans, Fans
22	Heating	Central Heat, Extra Oil Based
23	Inside Dining	6 at Table 4 at Counter
24	Outside Dining	8 at Table, 2 at Counter
25	Washer & Dryer	Yes
26	Fast Wi-Fi	Yes (20Mdown 3Mup)
27	TV	2 Smart TVs, DirecTV in Fam Room
28	Indoor Games	Board, Card, Dice, Etc.
29	Outdoor Games	Corn Hole
30	Smoking or Vaping?	NO!
31	Car/Truck Parking (without boat)5	3 on Sloped Driveway and 3 on gravel area off road.
32	Boat or ATV Parking (NO Motorhomes/Sleeping Trailers)	Dedicated Gravel Area off the road
33	Hot Tub	Yes
35	Gas BBQ (Propane Provided)	Yes
36	Heat Lamp (Propane Provided)	Yes
37	Outside Ice Chest (Summer)	Yes
38	Gas Fire Pit (Propane Provided)	Yes
39	Floating Island (Summer)	Shared with Retreat 1, 2, 3, 4, 5, 8, 9, 10 & 17.
40	Kayaks	2 Shared Between R1 & R2
41	Paddle Boards	2 Shared Between R1 & R2
42	Trail/Path to Marina	Yes
43	Lake Access/Trail	Yes
44	Boat Anchoring off shore	Yes
45	Buoy(s) for boats off shore	Yes7
46	Boat Slip at Marina	Sugarloaf Marina is Seasonal, normally open from May 1 to Sept 30. Next door to R1-5, 8-10, 17. Close walk from R6, R7, R12, R15, R18, R19, R20 Slips are \$55/night (2025). Antlers is open earlier and long and have better slips (more protected) and might be less in price. R11, and R16 should use Antlers.
47	House Location	Lakefront, 2nd Home on left on Daisy Ln, Sugarloaf Area of Lakehead. Next door to R2, R5. Same Street at R2, 3, 4, 5, 8, 9, 10, 17. 5-10 min walk to R6, 7, 12, 15, & 19.
48	Distance to Lake (When Full)	40 Feet11
49	Hammocks (Summer)	1
50	Shaded Deck	Yes, LV
51	Unshaded Deck	Yes, LV
52	Pets Allowed4	Yes, Approved only Well Trained Dogs4, \$95 Fee each
53	Reservation Sites14	Our Website (75%), VRBO (10%), Airbnb (15%). Lower cost/fees on our website at https://shastalakeshoreretreat.com/reservations/
54	Minimum Nights	2-7 Nights depending on time of year
56	Kids Stuff?	Port Crib
57	Other (things not mentioned)	Seasonal Stream. Two Viewing Decks. Trails to Marina and Lake. Play Pin on Request.
58	Stairs/Steps20	Main Floor - no steps from parking. Steep stairs to lower level (2 bedrooms, hot tub, bathroom)
59	2026 Pricing12	~\$314-847 a Night12
60	Fire Safety	Fire Extinguishers on each floor, CO2 Detectors on Each Floor, Smoke Detectors in Bedrooms and Hallways
61	Other	Linens, Bedding, Pillows, Towels, Laundry Soap, Dish Soap, Ice Maker, Coffee Maker (Drip and Single Cup Keurig), Coffee filters, Toaster, Pots/Pans, Plates, Bowls, Glasses, Wine Glasses, Utensils, Board Games, Card Games, Dice, Corn Hole (most), Horse Shoes (some), Salt, Pepper, Some seasonings, Paper Towels*, Toilet Paper*, Air Freshener and Propane*. *Limited Qty, see guidebook for details.

1. BR=Bedroom, 2. LV=Lakeview 3. Stairs=Must take stairs to access. 4. Dogs must be well trained, no medical issues, not left alone in house unless in crate and never on furniture or beds. \$95 fee per pet. 5. If you have a boat/trailer/RV it you will be able to have 2-3 less cars. 7. Warm months as long as not prevented. 8. Sugarloaf Marina offers seasonal daily boat slips to public on first come basis (check if open). 9. Wood or Pellets provided. NO Outdoor fires on property. 10. Can be used throughout the house and on the decks. 11. From back of house to water level when lake is full. Can be several hundred yards if lake is low. Trail provided to water's edge. 12. Plus 10% lodging tax, cleaning fee \$225-\$495, Additional Guests Fees and any VRBO/Airbnb fees if not direct. Lowest price mid week in winter. Highest price weekends in the Summer and holidays. 14. Although there is a electrical hook up you can use if you discuss with us, you can not use to sleep in to increase the max number of guests. 15. No RV Trailers or Motorhomes. 16. Distance to water and view will vary depending on lake level. 17. Planned but ETA not known yet. Inquire. 18. View depends on lake level. 19. Always remember to bring properly fitted life vests with you for children until 12. Difficult to find right size at marina. 20. Please call to discuss concerns about elderly and handicapped access. 21. Use of Kayaks, Paddle Boards, the Floating Island, the Lake, Bikes, BBQ, Fireplace, Firepit, Heat Lamps, Hot Tubs and all other activities are at your own risk. Call us with questions. (Updated 1-20-2026)