



Shasta

LAKESHORE RETREAT  
[www.shastalakeshoreretreat.com](http://www.shastalakeshoreretreat.com)



# TOUR OF RETREAT #11

Lake & River View Vacation Rental  
Shasta Lake, California

Updated: October 22, 2024, Part 2

Please also see Part 1, the Overview Brochure that goes with this at:  
<https://shastalakeshoreretreat.com/Shasta-Lakeshore-Retreat-Info>





# LAKE SHORE RETREAT



- ◆ ~1300 square feet, Lake & River View Great Location
- ◆ 3 Bedrooms, 2 Full Baths, Kitchen/Main Family Room Great Lake Views!
- ◆ Clean, Cute Bungalow looking over Shasta Lake & Sacramento River
- ◆ Private Location with lots of Flat Parking
- ◆ Excellent Wide Path down to the Water (about 300 yards)
- ◆ Sleeps up to 8 (2 Kings, Two Queens, Sofa Sleeper & Mini Bunk Beds)
- ◆ Covered Lakeview Deck with a BBQ and Gas Fire Pit
- ◆ Kayaks & Paddle Boards
- ◆ Central Heating & Air Conditioning







# LAKESHORE RETREAT

## ◆ Main Room/Kitchen

- Open Space including Kitchen, Dining & Family Room.
- Slider to Great Lake Views on the Deck and Surrounding Area
- Full Kitchen including Electric Stove/Oven Range, Dishwasher, Refrigerator, and Microwave. Pantry for your Supplies.
- 50" Smart HDTV, Gas Stove.







# LAKESHORE RETREAT

## ◆ Master Bedroom #1

- California King Bed, Nightstands, Dresser, Ceiling Fans.
- Door to bathroom.



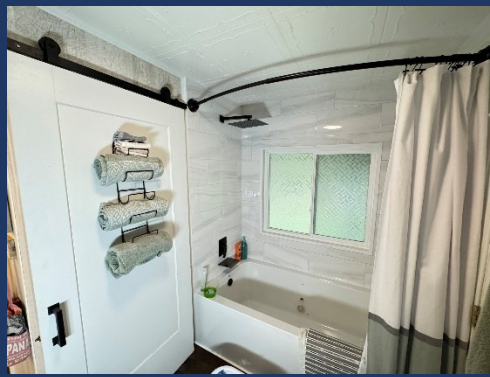
## ◆ Little Kids Bunk Bed Area

- Two Singles, Two Mini Singles.
- Located off Master Bedroom.



## ◆ Master Bathroom

- Dual Sinks
- Hydro Tub & Shower







# LAKESHORE RETREAT

## ◆ Bedroom #2

- California King Bed, Nightstands, Ceiling Fan.



## ◆ Bathroom #2

- Shower, Sink & Toilet



## ◆ Reading Room

- Small Separate Space with Doors for Privacy
- Pull Out Double Bed







# LAKESHORE RETREAT

## ◆ Bedroom #3...The Conductors Cabin

- Separate Room the Older Kids will Love
- About 50 yards from Main House & Bathrooms
- Two Queen Beds
- Air Conditioned and Heated



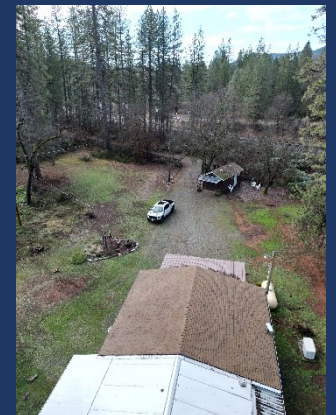
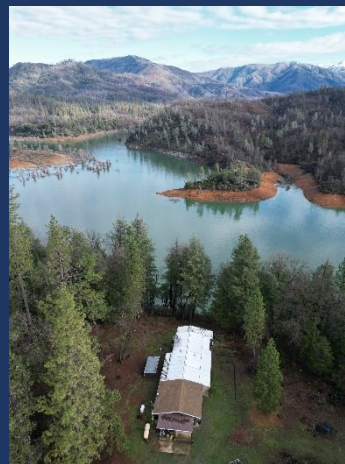




# LAKESHORE RETREAT

◆ Private Outdoor Deck on Expansive Property

- Great views of the Lake Below
- Turns into the Sacramento River when Lake is low
- Large Flat Space, Room for Multiple Cars & Boats
- Places to Ride your ATVs
- Horseshoes, Tire Swing, & Path to Water

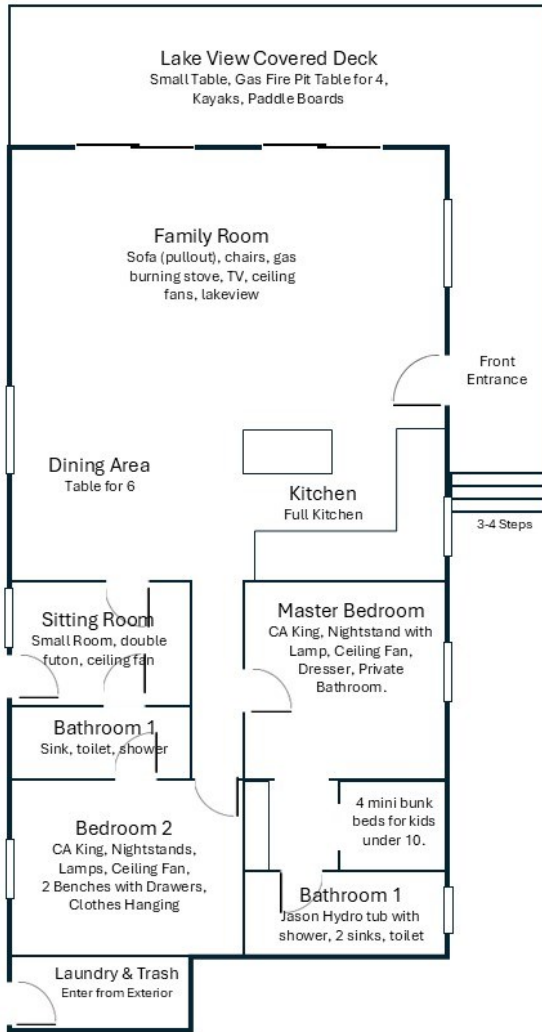






# LAKESHORE RETREAT

## Retreat 11 Floor Plan



**Bedroom 3**  
Two Queen Beds in Separate Building about 50 yards from main house. No bathroom in this building. Must go to main house.

Not to Scale, Approximate Drawing

### Availability Calendar



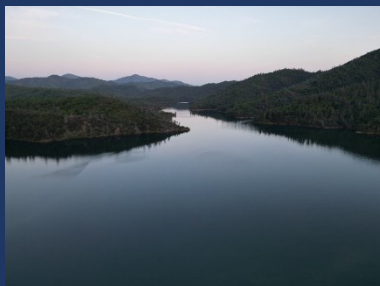
### Reservations



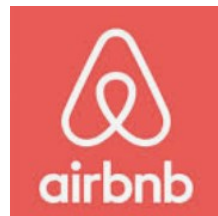
### Shasta Area Information



### Shasta Lakeshore Retreat Website



### Reservations Available on All Three Platforms



- Click on Any Logo -





# LAKESHORE RETREAT

#	Item	Retreat #11
1	~ Sq. Footage & # of Levels	~1600, 1 floor, Lakeview with Trail
2	MAX. Sleep Number	8 (max# of Adults=6)
3	# Bedrooms/Lofts	3
4	Reservations/Stays	Now/Now
5	Bedroom 1 (Master)	CA King, Nightstand with Lamp/usb, Ceiling Fan, Dresser, Private Bathroom. Also 4 mini bunk beds for children under 10 years old.
6	Bedroom 2	CA King, Nightstands with Lamps/usb, ceiling fan, 2 Benches with Drawers, Clothes Hanging, Door to J/J bathroom.
7	Bedroom 3	Two Queen Beds in Separate Building about 50 yards from main house. No bathroom in this building. Must go to main house.
10	Extra Room	Bunkroom: Kids hideaway with L shaped bunks, 2 twin and 2 youth. Share bath with Bedroom 1. Small Sitting Room: double futon, ceiling fan, 4 drawer stand, door to small side porch. Door to J/J bathroom.
11	Family Area (off Kitchen)	Sofa (pullout), chairs, gas burning wood stove, ceiling fans, TV, lakeview
12	Extra Bedding	Pullout in living room, porta crib
13	# of Full Bathrooms	2
14	Bathroom 1	Jason Hydro tub with shower, double vanity sink, toilet
15	Bathroom 2	J/J with Sink, toilet, shower & access from Bedroom 2 or Futon sitting room
18	Kitchen	Refrigerator/Freezer w/Ice Maker, Gas Stove, Microwave, Sink, Dishwasher, Island, Lakeview
19	Refrigerator/Freezers	1 in Kitchen (new) and 1 in garage
20	Fireplace or Stove	Gas Burning Wood Stove
21	Cooling	Central Air, Ceiling Fans, Fans
22	Heating	Central Heat
23	Inside Dining	6-8 at table, 4 at kitchen island
24	Outside Dining	8 at Picnic Table, 4 at Gas Fire Pit
25	Washer & Dryer	Yes
26	Fast Wi-Fi	Yes (Fast Starlink)
27	TV	1 Smart HDTV, 50"
28	Indoor Games	Board Games, Cards
29	Outdoor Games	Horseshoes, Corn Hole, large sandbox, tree swing, badminton/volley ball, soccer balls and whiffle baseball
30	Smoking or Vaping?	NO!
31	Car/Truck Parking (without boat)5	Flat 6 cars
32	Boat or ATV Trailer Parking15	Flat 6 boats/ATV
35	Gas BBQ (Propane Provided)	Yes
37	Outside Ice Chest (Summer)	Yes
38	Gas Fire Pit (Propane Provided)	Yes
40	Kayaks	2
41	Paddle Boards	2
42	Trail/Path to Marina	Short 5 min Drive to Antlers
43	Lake Access/Trail	Yes, Wide trail to water.
44	Boat Anchoring off shore	Yes (when lake high)
46	Boat Slip at Marina	Sugarloaf Marina is Seasonal, normally open from May 1 to Sept 30. Next door to R1-5, 8-10, 17. Close walk from R6, R7, R12, R15, R18, R19 Slips are \$55/night (2024). Antlers is open earlier and long and have better slips (more protected) and might be less in price. R11, and R16 should use Antlers.
47	House Location	Lakeview perched above lake, (Lake or River depending on lake level), Private Location, 1 Mile north of Antlers Resort. Train tracks near property. R16 is closest.
48	Distance to Lake (When Full)	100 Feet (300 yards on Trail)
49	Hammocks (Summer)	2 chair hammocks
50	Shaded Deck	Covered
51	Unshaded Deck	Lots of flat open area.
52	Pets Allowed4	Yes, Approved only Well Trained Dogs4, \$95 (plus tax)
53	Reservation Sites14	Our Website (70%), VRBO (15%), Airbnb (15%). Lower cost/fees on our website at <a href="https://shastalakeshoreretreat.com/reservations/">https://shastalakeshoreretreat.com/reservations/</a>
54	Minimum Nights	2-7 Nights depending on time of year
55	Whole Home Auto Generator	Yes
56	Kids Stuff?	Port Crib, High Chair, Some Toys
57	Other (things not mentioned)	Updated, private & secluded to roam & explore. Paved switchback path to water 5 -7 minutes when lake is full. (carts provided for kayaks, paddleboards). When lake low, rapids to float, swimming holes & always fishing.
58	Stairs/Steps20	5 stairs to deck/porch
59	2025 Pricing12	\$164 - \$567 Per Night
60	Fire Safety	Fire Extinguishers on each floor, CO2 Detectors on Each Floor, Smoke Detectors in Bedrooms and Hallways
61	Other	Linens, Bedding, Pillows, Towels, Laundry Soap, Dish Soap, Ice Maker, Coffee Maker (R4, R8, R14 has Keurig, bring your favorite cups), Coffee filters, Toaster, Pots/Pans, Plates, Bowls, Glasses, Wine Glasses, Utensils, Board Games, Card Games, Dice, Corn Hole, Horse Shoes, Salt, Pepper, Some seasonings, Paper Towels*, Toilet Paper*, Air Freshener and Propane*. *Limited Qty, see welcome book for details.

1. BR=Bedroom, 2. LV=Lakeview 3. Stairs=Must take stairs to access. 4. Dogs must be well trained, no medical issues, not left alone in house unless in crate and never on furniture or beds. \$95 fee per pet. 5. If you have a boat/trailer/RV it you will be able to have 2-3 less cars. 7. Warm months as long as not prevented. 8. Sugarloaf Marina offers seasonal daily boat slips to public on first come basis (check if open). 9. Wood or Pellets provided. NO Outdoor fires on property. 10. Can be used throughout the house and on the decks. 11. From back of house to water level when lake is full. Can be several hundred yards if lake is low. Trail provided to water's edge. 12. Plus 10% lodging tax, cleaning fee \$225-\$495, Additional Guests Fees and any VRBO/Airbnb fees if not direct. Lowest price mid week in winter. Highest price weekends in the Summer and holidays. 14. Although there is an electrical hook up you can use if you discuss with us, you can not use to sleep in to increase the max number of guests. 15. No RV Trailers or Motorhomes. 16. Distance to water and view will vary depending on lake level. 17. Planned but ETA not known yet. Inquire. 18. View depends on lake level. 19. Always remember to bring properly fitted life vests with you for children until 12. Difficult to find right size at marina. 20. Please call to discuss concerns about elderly and handicapped access. 21. New to our collection of homes, replacing a previous Retreat 8. 22 New to our collection of homes, replacing a previous Retreat 17. Call us with questions. (Updated 10-8-2024)