



Shasta

LAKESHORE RETREAT  
[www.shastalakeshoreretreat.com](http://www.shastalakeshoreretreat.com)



# TOUR OF RETREAT #15

Lakeview Vacation Rental  
Shasta Lake, California

Updated: May 9, 2026

Part 2

Please also see Part 1, the Overview Brochure that goes with this at:

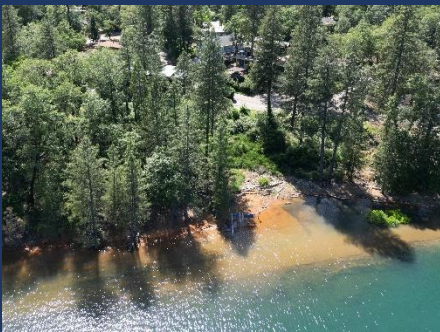
<https://shastalakeshoreretreat.com/Shasta-Lakeshore-Retreat-Info>



# LAKESHORE RETREAT



- ◆ Lakeview Cabin in Popular Sugarloaf Area
- ◆ ~1850 Square Feet with 3 Bedrooms and 3 Full Baths
- ◆ High Wood Ceilings with Rustic Style Interior
- ◆ Expansive Windows
- ◆ Open Living Space including Pool Table
- ◆ Sleeps up to 10, 9 Adults Max
- ◆ 2 Queens, Full, Twin over Full Bunk Bed, plus Sofa Bed
- ◆ Two Levels of Lakeview Decks
- ◆ Hot Tub, Kayak, Paddle Board & Two Bikes
- ◆ Short Walk to Marina, Lake, and Boat Ramps





# LAKESHORE RETREAT

## ◆ Main Room/Kitchen

- Kitchen, Bar Stools, Dining Room Table for 8, 50" HDTV, & Pool Table
- Rustic Charm of a Heavy Timber Cabin with Warmth of High Wood Ceilings
- Expansive Windows
- Steps out to Deck with Patio Table, Chairs and BBQ
- Cozy Wood Burning Stove





# LAKESHORE RETREAT

- ◆ Master Bedroom #1
  - Main Upper Floor
  - Queen Bed, Dresser, Nightstands, Ceiling Fan, Closet
  - Master Bathroom



- ◆ Master Bathroom #1
  - Shower, Sink, Toilet



- ◆ Guest Bedroom #2
  - Main Upper Level
  - Twin over Full Bunk Bed
  - Additional Full
  - Chair, Ceiling Fan, Closet



- ◆ Bathroom #2
  - Upper Floor
  - Shower/Tub, Sink, Toilet
  - Door to Common Hallway



- ◆ Guest Bedroom #3
  - Lower Level
  - Queen Bed
  - Sleeper Queen Sofa



- ◆ Full Bath #3
  - Lower Floor
  - No photo



# LAKESHORE RETREAT

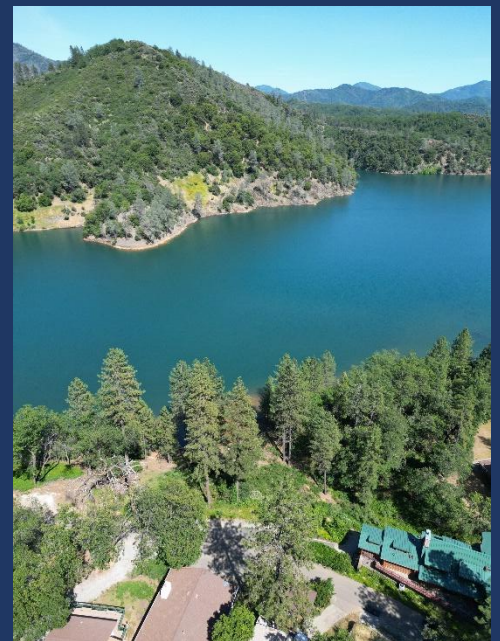
## ◆ Upper Deck

- Patio Tables & Chairs, BBQ
- Great Lake & Mountain Views



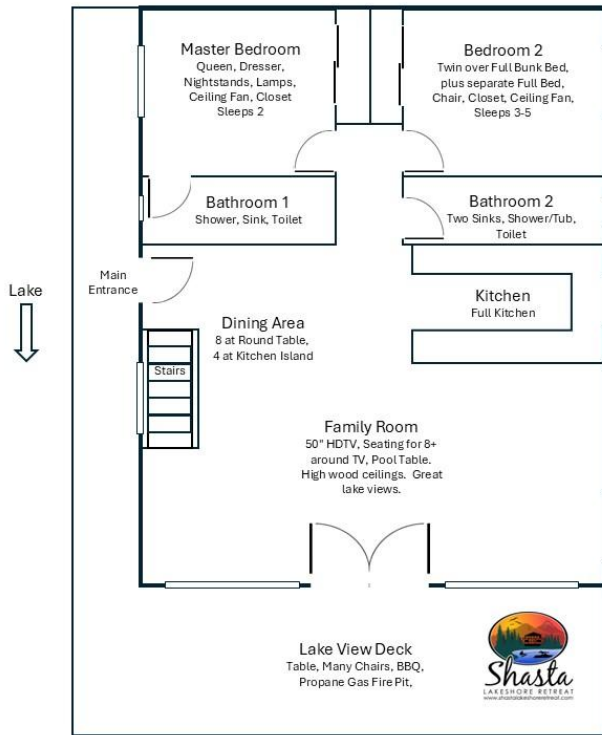
## ◆ Lower Decks

- Lower Shaded Deck outside Bedroom #3
- Hot Tub Deck for Great Lake Views
- Kayak, Paddle Board & Two Bikes

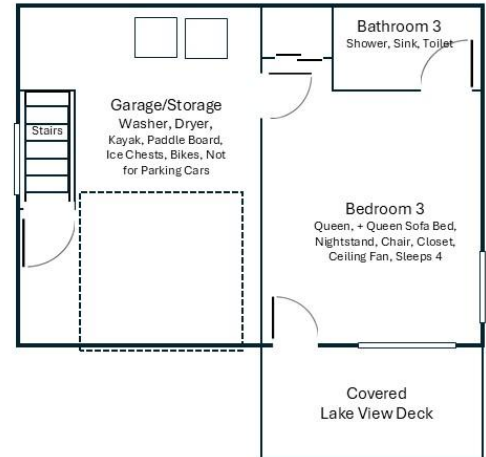




Retreat 15 Upper Main Level Floor Plan



Retreat 15 Lower-Level Floor Plan



Shasta Area Information



Shasta Lakeshore Retreat Website



Availability Calendar



Reservations



Reservations Available on All Three Platforms



- Click on Any Logo -



# Shasta LAKESHORE RETREAT





# Shasta LAKESHORE RETREAT

Item	Feature	Retreat #15
1	~ Sq. Footage & # of Levels	~1800, 2 Floors, Lakeview
2	MAX. Sleep Number	10 (max# of adults = 9)
3	# Bedrooms/Lofts	3
4	Reservations/Stays	Now/Now
5	Bedroom 1 (Master)	Queen, Dresser, Nightstands, Lamps, Ceiling Fan, Closet, Door to Master Bath, Main Upper Floor
6	Bedroom 2	Twin over Full Bunk Bed, plus separate Full, Chair, Closet, Ceiling Fan, Main Upper Floor
7	Bedroom 3	Queen, + Queen Sofa Bed, Nightstand, Chair, Closet, Ceiling Fan, Lower Level, Close to Hot Tub
10	Extra Room	Although not a separate room, the game room is part of the large open main area and includes a pool table.
11	Family Area (off Kitchen)	50" HDTV, Seating for 8+ around TV, plus Dining Area + Kitchen Island. Pool Table. High wood ceilings. Great lake views.
13	# of Full Bathrooms	3
14	Bathroom 1	Main Upper Floor, Master Bath, Shower, Sink, Toilet, Door only to Master
15	Bathroom 2	Main Upper Floor, Tub/Shower Combo, Toilet, Sink, Door to Hallway
16	Bathroom 3	Lower Floor, Shower, Sink, Toilet with Door to Bedroom 3.
18	Kitchen	Refrigerator/Freezer w/Ice Maker, Electric Stove, Microwave, Sink, Dishwasher, Attached Island with 4 bar stools, Granite Counter Tops, Lakeview
19	Refrigerator/Freezers	1 Large
20	Fireplace or Stove	Wood Stove
21	Cooling	Central Air, Ceiling Fans
22	Heating	Central heat
23	Inside Dining	8 at Round Table, 5 at Kitchen Island
24	Outside Dining	4 at Table (Will be adding)
25	Washer & Dryer	Yes
26	Fast Wi-Fi	Yes (20Mdown 3Mup)
27	TV	One ~50" HDTV
28	Indoor Games	Pool Table in Main Family Area
30	Smoking or Vaping?	NO!
31	Car/Truck Parking (without boat)5	Up to 4 cars plus boat.
32	Boat or ATV Trailer Parking15	In front or back of house.
33	Hot Tub	Yes, Lower Level
35	Gas BBQ (Propane Provided)	Yes
38	Gas Fire Pit (Propane Provided)	Yes
39	Floating Island (Summer)	Floating Island (Summer)
40	Kayaks	1 (inquire)
41	Paddle Boards	1
42	Trail/Path to Marina	Short Walk/Drive Via Road, Paths
43	Lake Access/Trail	Short Walk/Drive Via Road, Paths
46	Boat Slip at Marina	Sugarloaf Marina is Seasonal, normally open from May 1 to Sept 30. Next door to R1-5, 8-10, 17. Close walk from R6, R7, R12, R15, R18, R19, R20 Slips are \$55/night (2025). Antlers is open earlier and long and have better slips (more protected) and might be less in price. R11, and R16 should use Antlers.
47	House Location	Sugarloaf area of Lakehead, with lake across the quiet street, 5 min walk to marina. Closest to Retreat 6, 12, & 7. Short walk to R1-5, 8-10,17, 18, 19, & 20.
48	Distance to Lake (When Full)	~100 yards
50	Shaded Deck	Yes, Lower Level
51	Unshaded Deck	Yes, Upper Level
52	Pets Allowed4	Yes, Approved only Well Trained Dogs4, \$95 (plus tax)
53	Reservation Sites14	Our Website (75%), VRBO (10%), Airbnb (15%). Lower cost/fees on our website at <a href="https://shastalakeshoreretreat.com/reservations/">https://shastalakeshoreretreat.com/reservations/</a>
54	Minimum Nights	2-7 Nights depending on time of year
57	Other (things not mentioned)	Cabin feel and decor, great main family rom/kitchen/dining/gaming looking out big A frame like windows to lake. Lots of seating inside. Lower bedroom/bathroom require walk through garage where the washer/dryer is located. 2 Bikes available.
58	Stairs/Steps20	2 Steps up, 5 down to get to upper front door. Lower level, steep slope from road.
59	2026 Pricing12	~\$253-\$684 Per Night
60	Fire Safety	Fire Extinguishers on each floor, CO2 Detectors on Each Floor, Smoke Detectors in Bedrooms and Hallways
61	Other	Linens, Bedding, Pillows, Towels, Laundry Soap, Dish Soap, Ice Maker, Coffee Maker (Drip and Single Cup Keurig), Coffee filters, Toaster, Pots/Pans, Plates, Bowls, Glasses, Wine Glasses, Utensils, Board Games, Card Games, Dice, Corn Hole (most), Horse Shoes (some), Salt, Pepper, Some seasonings, Paper Towels*, Toilet Paper*, Air Freshener and Propane*. *Limited Qty, see guidebook for details.

1. BR=Bedroom, 2. LV=Lakeview 3. Stairs=Must take stairs to access. 4. Dogs must be well trained, no medical issues, not left alone in house unless in crate and never on furniture or beds. \$95 fee per pet. 5. If you have a boat/trailer/RV it you will be able to have 2-3 less cars. 7. Warm months as long as not prevented. 8. Sugarloaf Marina offers seasonal daily boat slips to public on first come basis (check if open). 9. Wood or Pellets provided. NO Outdoor fires on property. 10. Can be used throughout the house and on the decks. 11. From back of house to water level when lake is full. Can be several hundred yards if lake is low. Trail provided to water's edge. 12. Plus 10% lodging tax, cleaning fee \$225-\$495, Additional Guests Fees and any VRBO/Airbnb fees if not direct. Lowest price mid week in winter. Highest price weekends in the Summer and holidays. 14. Although there is a electrical hook up you can use if you discuss with us, you can not use to sleep in to increase the max number of guests. 15. No RV Trailers or Motorhomes. 16. Distance to water and view will vary depending on lake level. 17. Planned but ETA not known yet. Inquire. 18. View depends on lake level. 19. Always remember to bring properly fitted life vests with you for children until 12. Difficult to find right size at marina. 20. Please call to discuss concerns about elderly and handicapped access. 21. Use of Kayaks, Paddle Boards, the Floating Island, the Lake, Bikes, BBQ, Fireplace, Firepit, Heat Lamps, Hot Tubs and all other activities are at your own risk. Call us with questions. (Updated 1-20-2026)