



TOUR OF RETREAT #16

Cozy Lake House Vacation Rental
Shasta Lake, California

Updated: October 22, 2024

Part 2

Please also see Part 1, the Overview Brochure that goes with this at:

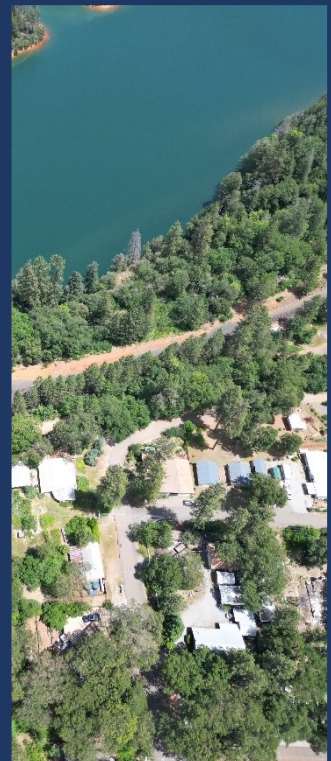
<https://shastalakeshoreretreat.com/Shasta-Lakeshore-Retreat-Info>



LAKESHORE RETREAT



- ◆ ~925 square feet, Sleeps up to 6 (1 Queen, 1 Full, Twin Trundle)
- ◆ 2 Bedrooms, 1 Full Bath, New Kitchen/Main Family Room
- ◆ Clean, Cute home with great shade from mature trees
- ◆ Good Flat Parking for Trucks, Boats and Cars
- ◆ New Deck with BBQ, Fire Pit, Heat Lamp, & Patio Table for 6
- ◆ Cornhole & Horseshoes
- ◆ Heating & Air Conditioning via Mini Splits
- ◆ ½ Mile Walk to Lake, 5 Min Drive to Boat Ramp, 7 Min Drive to Antler's Marina
- ◆ Closest to Retreat 11





LAKESHORE RETREAT

◆ Main Room/Kitchen

- Open Space including New Kitchen, & Family Room.
- Seating for 4 at the Counter
- Big Windows, 70" Smart HDTV
- Full Kitchen including Stove/Oven Range, Dishwasher, Refrigerator, and Microwave.
- Fireplace is currently not in use





LAKESHORE RETREAT

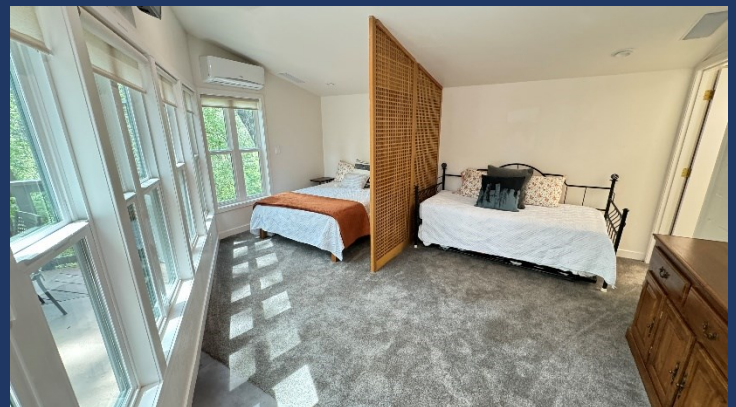
♦ Master Bedroom #1

- California King Bed, Nightstands, Dresser, Ceiling Fans.
- Door to bathroom.



♦ Bedroom #2

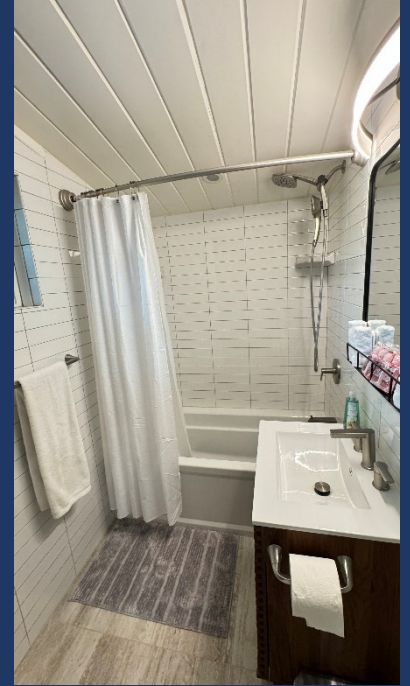
- California King Bed, Nightstands, Ceiling Fan.



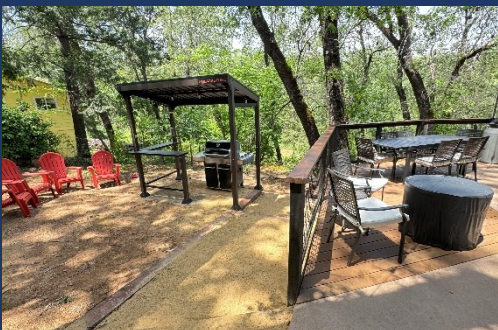


LAKESHORE RETREAT

- ◆ Bathroom
 - Shower, Sink & Toilet



- ◆ Outdoor Deck and Yard
 - New Deck & Railing
 - BBQ, Fire Pit, Heat Lamp, Patio Table for 6





LAKE SHORE RETREAT

- Cornhole & Horseshoes
- Kayak and Paddle Board
- Large Falt Driveway for Truck & Boat
- Additional Parking by Street in front of Property

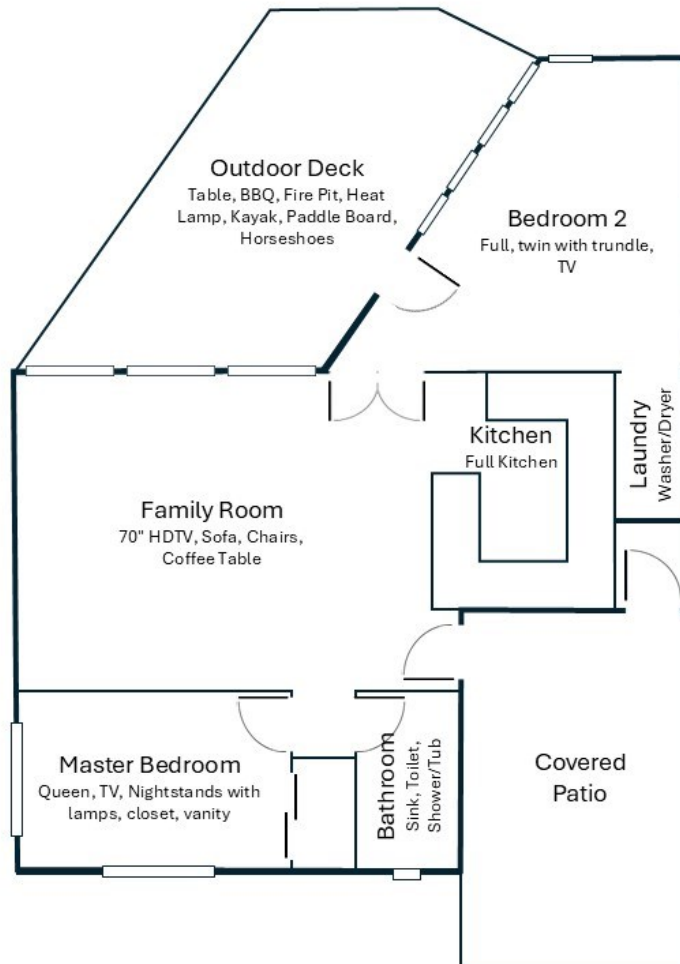


◆ ½ Mile Walk to Lake, 5 Min Drive to the Boat Ramp, 7 Mins to Marina



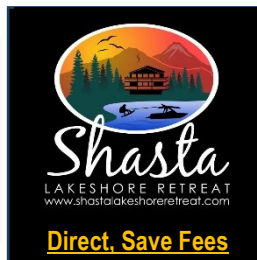


Retreat 16 Floor Plan (Single Level)



Not to Scale, Approximate Drawing

Reservations Available on All Three Platforms



- Click on Any Logo -



LAKE SHASTA RETREAT

Shasta Area Information



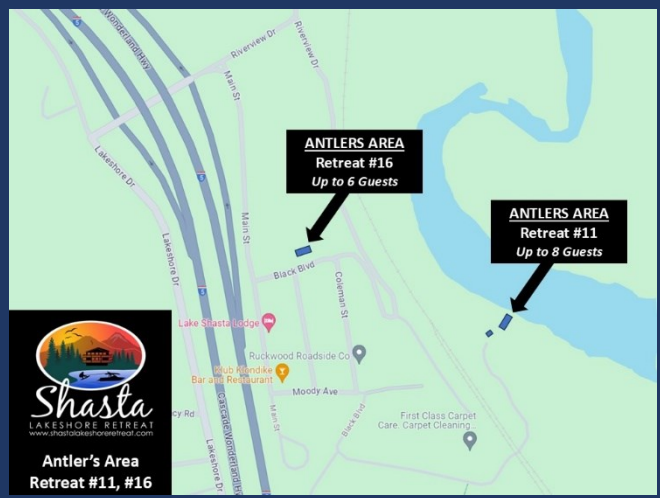
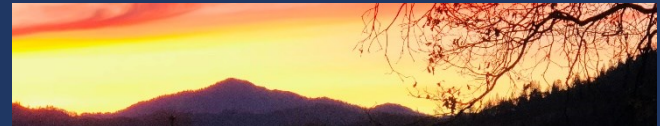
Shasta Lakeshore Retreat Website



Availability Calendar



Reservations





LAKE SHORE RETREAT

#	Item	Retreat #16
1	~ Sq. Footage & # of Levels	~925, 1 floor, short drive to lake
2	MAX. Sleep Number	6 (max #of adults=6)
3	# Bedrooms/Lofts	2
4	Reservations/Stays	Now/Now
5	Bedroom 1 (Master)	Queen, TV, Nightstands with lamps, closet, vanity
6	Bedroom 2	Full, twin with trundle, TV
11	Family Area (off Kitchen)	70" HDTV, Sofa, Chairs, Coffee Table
13	# of Full Bathrooms	1
14	Bathroom 1	Shower/soaking tub, Sink, Toilet
18	Kitchen	All new refrig/freezer, gas stove, microwave, dishwasher. No ice maker.
19	Refrigerator/Freezers	1 Large
21	Cooling	3 mini splits for great air
22	Heating	3 mini splits for great heat
23	Inside Dining	4 at bar
24	Outside Dining	6 at Patio Table
25	Washer & Dryer	Yes
26	Fast Wi-Fi	Yes (ATT)
27	TV	3 Smart HDTVs, streaming
28	Indoor Games	Board, Card, Dice etc.
29	Outdoor Games	Corn Hole, Horse Shoes
30	Smoking or Vaping?	NO!
31	Car/Truck Parking (without boat)5	Up to four cars, one boat
32	Boat or ATV Trailer Parking15	Right Side and Front of House
35	Gas BBQ (Propane Provided)	Yes
36	Heat Lamp (Propane Provided)	Yes
37	Outside Ice Chest (Summer)	Yes
38	Gas Fire Pit (Propane Provided)	Yes
40	Kayaks	1
41	Paddle Boards	1
42	Trail/Path to Marina	7 min Drive, Boat Ramp 5 min Drive
43	Lake Access/Trail	Yes, 1/2-1 Mile
46	Boat Slip at Marina	Sugarloaf Marina is Seasonal, normally open from May 1 to Sept 30. Next door to R1-5, 8-10, 17. Close walk from R6, R7, R12, R15, R18, R19 Slips are \$55/night (2024). Antlers is open earlier and long and have better slips (more protected) and might be less in price. R11, and R16 should use Antlers.
47	House Location	Northern Part of Lakehead in similar area as Retreat 11. Short Drive to Antler's marina. In small neighborhood. Short walk to one Restaurant (Klondikes).
48	Distance to Lake (When Full)	1/2+ mile if walk on trails??21
51	Unshaded Deck	Yes
52	Pets Allowed4	Yes, Approved only Well Trained Dogs4, \$95 (plus tax)
53	Reservation Sites14	Our Website (70%), VRBO (15%), Airbnb (15%). Lower cost/fees on our website at https://shastalakeshoreretreat.com/reservations/
54	Minimum Nights	2-7 Nights depending on time of year
57	Other (things not mentioned)	House has modern kitchen, new flooring, nice deck and more. Very nice and perfect for one family or two couples. More affordable than other homes.
58	Stairs/Steps20	1 step up then all on one level. Very easy access.
59	2025 Pricing12	\$124 - \$443 Per Night
60	Fire Safety	Fire Extinguishers on each floor, CO2 Detectors on Each Floor, Smoke Detectors in Bedrooms and Hallways
61	Other	Linens, Bedding, Pillows, Towels, Laundry Soap, Dish Soap, Ice Maker, Coffee Maker (R4, R8, R14 has Keurig, bring your favorite cups), Coffee filters, Toaster, Pots/Pans, Plates, Bowls, Glasses, Wine Glasses, Utensils, Board Games, Card Games, Dice, Corn Hole, Horse Shoes, Salt, Pepper, Some seasonings, Paper Towels*, Toilet Paper*, Air Freshener and Propane*. *Limited Qty, see welcome book for details.

1. BR=Bedroom, 2. LV=Lakeview 3. Stairs=Must take stairs to access. 4. Dogs must be well trained, no medical issues, not left alone in house unless in crate and never on furniture or beds. \$95 fee per pet. 5. If you have a boat/trailer/RV it you will be able to have 2-3 less cars. 7. Warm months as long as not prevented. 8. Sugarloaf Marina offers seasonal daily boat slips to public on first come basis (check if open). 9. Wood or Pellets provided. NO Outdoor fires on property. 10. Can be used throughout the house and on the decks. 11. From back of house to water level when lake is full. Can be several hundred yards if lake is low. Trail provided to water's edge. 12. Plus 10% lodging tax, cleaning fee \$225-\$495, Additional Guests Fees and any VRBO/Airbnb fees if not direct. Lowest price mid week in winter. Highest price weekends in the Summer and holidays. 14. Although there is a electrical hook up you can use if you discuss with us, you can not use to sleep in to increase the max number of guests. 15. No RV Trailers or Motorhomes. 16. Distance to water and view will vary depending on lake level. 17. Planned but ETA not known yet. Inquire. 18. View depends on lake level. 19. Always remember to bring properly fitted life vests with you for children until 12. Difficult to find right size at marina. 20. Please call to discuss concerns about elderly and handicapped access. 21. New to our collection of homes, replacing a previous Retreat 8. 22 New to our collection of homes, replacing a previous Retreat 17. Call us with questions. (Updated 10-20-2024)