



TOUR OF RETREAT #17

Lake House Next to Lake, Marina, & Boat Ramp
Shasta Lake, California

Updated: May 9, 2026

Please also see Part 1, the Overview Brochure that goes with this at:
<https://shastalakeshoreretreat.com/Shasta-Lakeshore-Retreat-Info>



Shasta LAKESHORE RETREAT



- ◆ Cozy Lake House across the street from the Lake
- ◆ ~1800 square feet, 3 Bedrooms, 3 Full Baths
- ◆ Sleeps 12 (2 CA Kings, 4 Queen, Queen Futon, Queen Sofa Sleeper), Max 9 Adults
- ◆ Large Lake View Deck with sitting for 12, BBQ
- ◆ Next to Lake, Marina, and Boat Ramp
- ◆ Pool Table, Big Windows for Endless Views
- ◆ Indoor Wood Stove & Pellet Stove
- ◆ Central Heating & Air Conditioning





LAKESHORE RETREAT

◆ Main Room/Kitchen

- Open, High Ceilings, Big Windows for Lake View
- Table for 8, lots of sitting area.
- Full Kitchen
- Smart HDTV, Wood Stove





LAKE SHORE RETREAT

◆ Master Bedroom

- CA King Bed, Nightstands, Lamps, Ceiling Fan
- Mid, Main Level



◆ Master Bath/Bathroom 1

- Shower, Sink, Toilet



◆ Bedroom #2

- CA King
- Mid, Main Level



◆ Bathroom #2

- Tub/Shower, Sink, Toilet





LAKESHORE RETREAT

◆ Bedroom 3/Large Loft

- Two Queens & Queen Futon
- Upper Level with Lake Views
- Upstairs



◆ Bathroom #3

- Shower, Toilet and Sink
- Upper Floor





LAKESHORE RETREAT

- ◆ Spacious Game Room
 - Pool Table, Darts, Card Table
 - On Lower Level



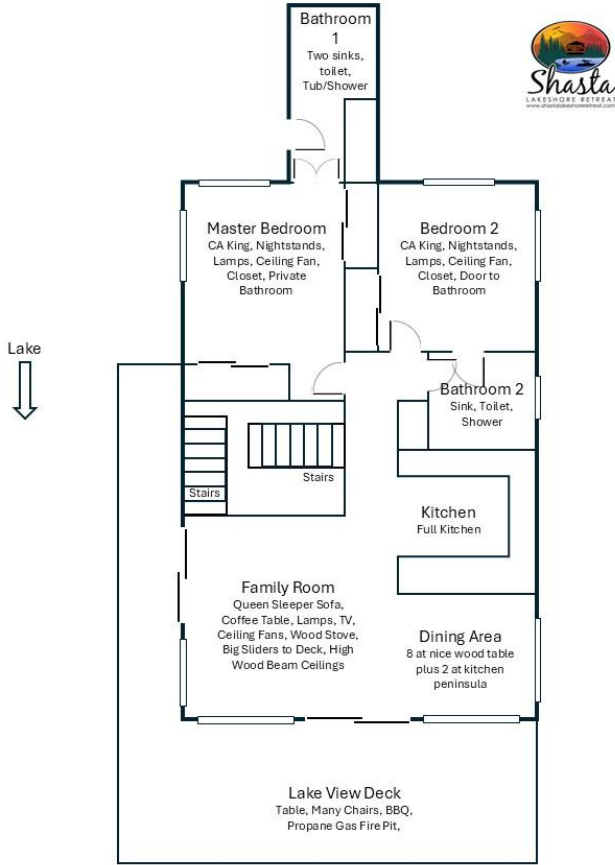
- ◆ Large Outdoor Entertaining Deck
 - Lake Views
 - Sitting for 12 (2 Patio Tables)





Shasta LAKESHORE RETREAT

Retreat 17 Mid Main Level

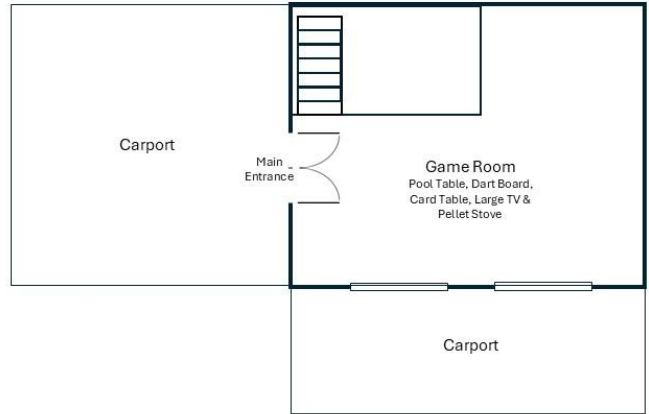


Not to Scale, Approximate Drawing

Retreat 17 Upper-Level Floor Plan



Retreat 17 Lower-Level Floor Plan



Not to Scale, Approximate Drawing





Shasta LAKESHORE RETREAT



Shasta Area Information



Shasta Lakeshore Retreat Website



Availability Calendar



Reservations



Reservations Available on All Three Platforms



- Click on Any Logo -



Shasta LAKESHORE RETREAT

Item	Feature	Retreat 17
1	~ Sq. Footage & # of Levels	~1800, 3 Floors, Lake View
2	MAX. Sleep Number	12 (max# of adults = 9)
3	# Bedrooms/Lofts	3
4	Reservations/Stays	Now/Now
5	Bedroom 1 (Master)	CA King, Main Floor, Night Stands, Lamps, Ceiling Fan, Closet, Door to Bathroom
6	Bedroom 2	CA King, Main Floor, Nightstands, Lamps, Ceiling Fan, Closet, Door to Bathroom
7	Bedroom 3	Two Queens, plus Queen Futon. Upper Floor Loft. Ceiling Fan, Raised Wood Ceilings, Nightstands, Door to Bathroom
10	Extra Room	Game Room with Pool Table, Dart Board, Card Table, Large TV & Pellet Stove.
11	Family Area (off Kitchen)	Queen Sleeper Sofa, Coffee Table, Lamps, TV, Ceiling Fans, Wood Stove, Big Sliders to Deck, High Ceilings
12	Extra Bedding	See Family Room
13	# of Full Bathrooms	3
14	Bathroom 1	Full Bath, Tub/Shower, Toilet, Sink, Main Floor
15	Bathroom 2	Full Bath,hower, Toilet, Sink, Main Floor
16	Bathroom 3	Full Bath, Shower, Toilet, Sink, Upper Floor
18	Kitchen	Refrig/Freezers w/Ice Maker, Gas Stove, Microwave, Dishwasher, all amenities, Main Floor overlooking back yard and deck.
19	Refrigerator/Freezers	1 Large
20	Fireplace or Stove	Wood Stove & Wood Pellet Stove
21	Cooling	Central Air, Ceiling Fans
22	Heating	Central Heat
23	Inside Dining	8 at nice wood table plus 2 at kitchen peninsula
24	Outside Dining	12 at Two Tables
25	Washer & Dryer	Yes
26	Fast Wi-Fi	Yes (Com-Pair)
27	TV	2, Smart TV
28	Indoor Games	Board, Card, Etc.
30	Smoking or Vaping?	NO!
31	Car/Truck Parking (without boat)5	Up to 5 cars, trucks and Boats. One Boat/Trailer
32	Boat or ATV Trailer Parking15	In front of house on safe street
35	Gas BBQ (Propane Provided)	Yes
38	Gas Fire Pit (Propane Provided)	Yes
39	Floating Island (Summer)	Yes
42	Trail/Path to Marina	Short Walk/Drive Via Road, Paths
43	Lake Access/Trail	Short Walk/Drive Via Road, Paths
46	Boat Slip at Marina	Slips can be obtained at any of the Local Marinas including Jones Valley (the closet), Silverthorne, and Bridge Bay Marina
47	House Location	Partial Lakeview18, Best Street in Shasta on Daisy Lane in Sugarloaf area next to Sugarloaf Marina8 & Boat Ramp. Same street as R1-5, R8-10, R17. Trail to lake.
48	Distance to Lake (When Full)	300 feet11
50	Shaded Deck	Yes, Umbrellas
51	Unshaded Deck	Yes, Deck
52	Pets Allowed4	Yes, Approved only Well Trained Dogs4, \$95 (plus tax)
53	Reservation Sites14	Our Website (75%), VRBO (10%), Airbnb (15%). Lower cost/fees on our website at https://shastalakeshoreretreat.com/reservations/
54	Minimum Nights	2-7 Nights depending on time of year
57	Other (things not mentioned)	Three remodeled unique bathrooms, pool table, great elevated deck with great views.
58	Stairs/Steps20	One flight of stairs to get to Main Floor.
59	2026 Pricing12	~\$266-\$716 Per Night
60	Fire Safety	Fire Extinguishers on each floor, CO2 Detectors on Each Floor, Smoke Detectors in Bedrooms and Hallways
61	Other	Linens, Bedding, Pillows, Towels, Laundry Soap, Dish Soap, Ice Maker, Coffee Maker (Drip and Single Cup Keurig), Coffee filters, Toaster, Pots/Pans, Plates, Bowls, Glasses, Wine Glasses, Utensils, Board Games, Card Games, Dice, Corn Hole (most), Horse Shoes (some), Salt, Pepper, Some seasonings, Paper Towels*, Toilet Paper*, Air Freshener and Propane*. *Limited Qty, see guidebook for details.

1. BR=Bedroom, 2. LV=Lakeview 3. Stairs=Must take stairs to access. 4. Dogs must be well trained, no medical issues, not left alone in house unless in crate and never on furniture or beds. \$95 fee per pet. 5. If you have a boat/trailer/RV it you will be able to have 2-3 less cars. 7. Warm months as long as not prevented. 8. Sugarloaf Marina offers seasonal daily boat slips to public on first come basis (check if open). 9. Wood or Pellets provided. NO Outdoor fires on property. 10. Can be used throughout the house and on the decks. 11. From back of house to water level when lake is full. Can be several hundred yards if lake is low. Trail provided to water's edge. 12. Plus 10% lodging tax, cleaning fee \$225-\$495, Additional Guests Fees and any VRBO/Airbnb fees if not direct. Lowest price mid week in winter. Highest price weekends in the Summer and holidays. 14. Although there is a electrical hook up you can use if you discuss with us, you can not use to sleep in to increase the max number of guests. 15. No RV Trailers or Motorhomes. 16. Distance to water and view will vary depending on lake level. 17. Planned but ETA not known yet. Inquire. 18. View depends on lake level. 19. Always remember to bring properly fitted life vests with you for children until 12. Difficult to find right size at marina. 20. Please call to discuss concerns about elderly and handicapped access. 21. Use of Kayaks, Paddle Boards, the Floating Island, the Lake, Bikes, BBQ, Fireplace, Firepit, Heat Lamps, Hot Tubs and all other activities are at your own risk. Call us with questions. (Updated 1-20-2026)