



TOUR OF RETREAT #18

Amazing Lake View Home
Shasta Lake, California

Updated: April 30, 2026, Part 2

Please also see Part 1, the Overview Brochure that goes with this at:
<https://shastalakeshoreretreat.com/Shasta-Lakeshore-Retreat-Info>



LAKESHORE RETREAT



- ◆ Amazing Lake Views from Both Decks & the Home
- ◆ Short Walk/Drive to Marina, Boat Ramp and Lake
- ◆ ~2000 square feet, 2 Bedrooms, Den & 2nd Family Room, 3 Full Baths
- ◆ Sleeps 14 (6 Max Adults)
- ◆ Lots of great flat parking for Cars & Trucks. Not Boats.
- ◆ 2 Fireplaces
- ◆ Central Heating & Air Conditioning



- ◆ Main Room/Kitchen



LAKESHORE RETREAT

- Awesome Elevated Views of the Lake!
- Modern Kitchen Stove/Oven Range, Dishwasher, Refrigerator, Freezer, and Microwave.
- Wood Burning Fireplace
- Dining Table for 6 plus 3 at Kitchen Island





LAKESHORE RETREAT

◆ Master Bedroom (Upper, Main Floor)

- King Bed, Nightstands, Lamps, Dresser, Ceiling Fan & Closet
- Slider to Deck
- Master Bath Door to Bedroom



◆ Bedroom #2 (Upper, Main Floor)

- Queen, Nightstands, Dresser, Ceiling Fans, Closet, Sleeper Sofa





LAKESHORE RETREAT

- ◆ Den (Upper, Main Floor)
 - Den & Laundry Room
 - Twin over Full Bunk Bed



- ◆ Family Room #2 (Lower Floor)
 - Full over Queen Bunk Bed, Sofa Bed
- Fireplace, Dresser, Ceiling Fan





LAKESHORE RETREAT

- ◆ Bathroom #1
 - Shower, Toilet and Sink
 - Upstairs, Master Bedroom



- ◆ Bathroom #2
 - Shower/Tub, Toilet, Sink
 - Upstairs, Door to Hallway

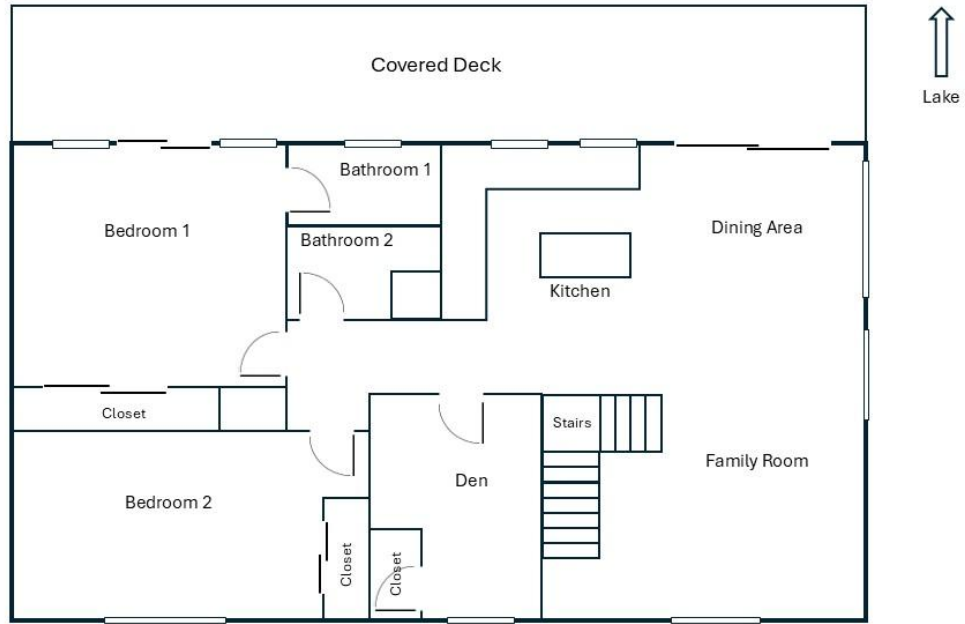


- ◆ Bathroom #3
 - Shower/Tub, Toilet, Sink
 - Door to Lower Floor Suite





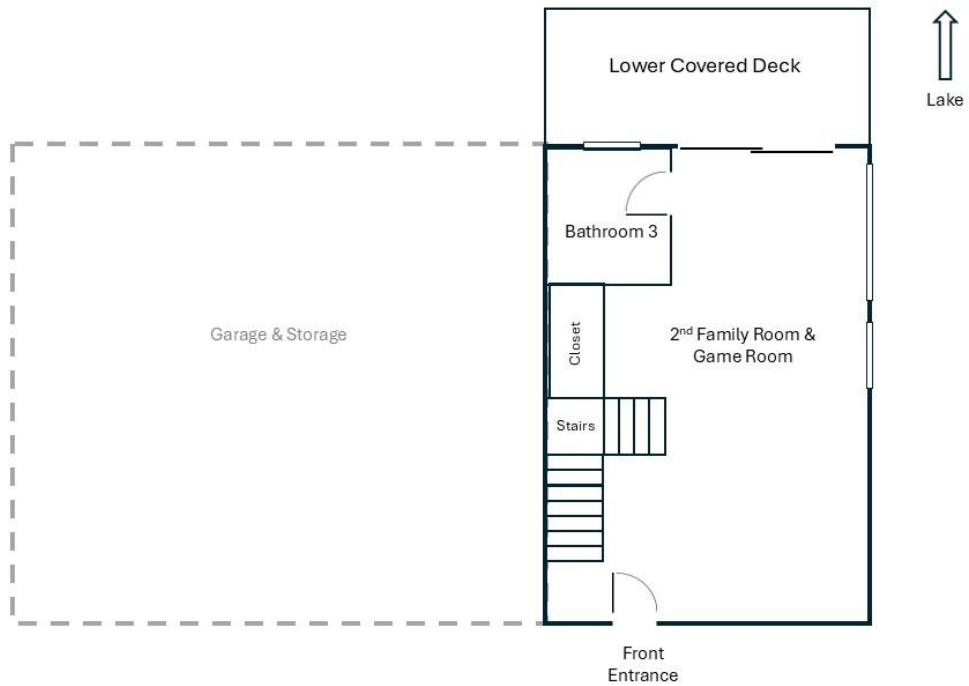
Retreat 18, Upper Main Floor



* Beds Style may change.

Not to Scale, Approximate Drawing

Retreat 18, Lower Floor

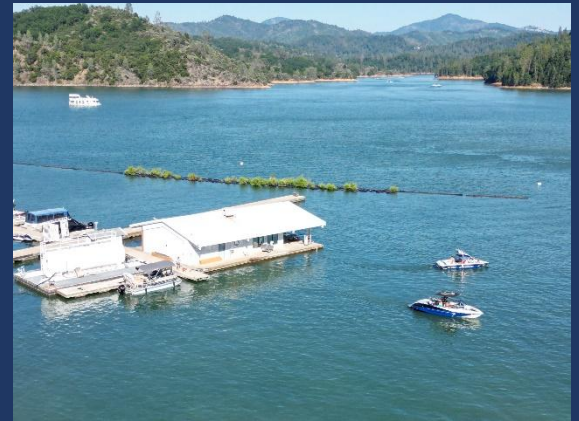


Not to Scale, Approximate Drawing



LAKESHORE RETREAT

- ◆ Endless views of Lake
 - Unobstructed Views of Sugarloaf area and the Lake
 - Two fully covered large decks.
 - Hammock, Lots of Parking (no boats/trailers)





LAKESHORE RETREAT



Shasta Area Information



Shasta Lakeshore Retreat Website



Availability Calendar



Reservations



Reservations Available on All Three Platforms





Direct, Save Fees



- Click on Any Logo -



Shasta LAKESHORE RETREAT





Shasta LAKESHORE RETREAT

Item	Feature	Retreat #18
1	~ Sq. Footage & # of Levels	~2000, 2 Floors, Lake Views
2	MAX. Sleep Number	14 (max# of adults = 6)
3	# Bedrooms/Lofts	4
4	Reservations/Stays	Now/Now
5	Bedroom 1 (Master)	King, Dresser, Ceiling Fan, Lamp, Closet, Lake View, Slider out to Deck, Private Bath
6	Bedroom 2	Queen, Futon, Closet, Ceiling Fan, Lamp
7	Den	Den: Twin over Full Bunk Bed, Ceiling Fans, Wash/Dryer, Lamp, Closet, Small Room
8	Family Room #2	2nd Large Private Family/Suite with Full over Queen Bunk Bed, Sleeper sofa, and own bathroom and fireplace with slider to lower deck.
11	Family Area (off Kitchen)	Sofas, Coffee Table, Fireplace
13	# of Full Bathrooms	3
14	Bathroom 1	Shower, Sink, Toilet, Door to Master
15	Bathroom 2	Tub/Shower, Sink, Toilet, Door to Hallway
16	Bathroom 3	Shower, Sink, Toilet, Door to Large Family Room/Bedroom Suite
18	Kitchen	Refrigerator/Freezer w/Ice Maker, Stove, Microwave, Sink, Dishwasher, Views of Lake
19	Refrigerator/Freezers	1 Large
20	Fireplace or Stove	Wood Burning Fireplace x2
21	Cooling	Central Air, Ceiling Fans
22	Heating	Central Heat
23	Inside Dining	6 at Table, 3 Bar Stools
24	Outside Dining	Main Deck: 6 at Patio Table, 8 on sofas, chairs. Lower Level: Patio Table
25	Washer & Dryer	Yes
26	Fast Wi-Fi	Yes (Fast Starlink)
27	TV	2, Smart TV
28	Indoor Games	Board Games, Cards
29	Outdoor Games	
30	Smoking or Vaping?	NO!
31	Car/Truck Parking (without boat)5	Up to 4 cars. No trailers or boats.
32	Boat or ATV Trailer Parking15	No, We will have you park elsewhere
35	Gas BBQ (Propane Provided)	Yes
38	Gas Fire Pit (Propane Provided)	Yes
42	Trail/Path to Marina	5-10 Min Walk, 2 Min Drive
43	Lake Access/Trail	Short Walk/Drive Via Road, Paths, Hill Steep
46	Boat Slip at Marina	Sugarloaf Marina is Seasonal, normally open from May 1 to Sept 30. Next door to R1-5, 8-10, 17. Close walk from R6, R7, R12, R15, R18, R19, R20 Slips are \$55/night (2025). Antlers is open earlier and long and have better slips (more protected) and might be less in price. R11, and R16 should use Antlers.
47	House Location	Sugarloaf area of Lakehead, with a 5-10 min walk to lake and marina but steep hill. Short walk to all other retreats excepts #11, #14, #16. Closest to Retreat 1-5,8-10, 17.
48	Distance to Lake (When Full)	~400 yards
49	Hammocks (Summer)	
50	Shaded Deck	Yes, Both Levels
51	Unshaded Deck	Yes, some
52	Pets Allowed4	Yes, Approved only Well Trained Dogs4, \$95 (plus tax)
53	Reservation Sites14	Our Website (75%), VRBO (10%), Airbnb (15%). Lower cost/fees on our website at https://shastalakeshoreretreat.com/reservations/
54	Minimum Nights	2-7 Nights depending on time of year
55	Whole Home Auto Generator	Yes
57	Other (things not mentioned)	Lake Views are incredible. Good Parking at house but the steep nature of the road leading to the house and the sharp turns prevent the parking of a boat at the house. Shasta Lakeshore Retreat will provide other areas to park.
58	Stairs/Steps20	~1 step to front door and lower level. Main floor up one flight.
59	2026 Pricing12	~\$272-\$733 per Night
60	Fire Safety	Fire Extinguishers on each floor, CO2 Detectors on Each Floor, Smoke Detectors in Bedrooms and Hallways
61	Other	Linens, Bedding, Pillows, Towels, Laundry Soap, Dish Soap, Ice Maker, Coffee Maker (Drip and Single Cup Keurig), Coffee filters, Toaster, Pots/Pans, Plates, Bowls, Glasses, Wine Glasses, Utensils, Board Games, Card Games, Dice, Corn Hole (most), Horse Shoes (some), Salt, Pepper, Some seasonings, Paper Towels*, Toilet Paper*, Air Freshener and Propane*. *Limited Qty, see guidebook for details.

1. BR=Bedroom, 2. LV=Lakeview 3. Stairs=Must take stairs to access. 4. Dogs must be well trained, no medical issues, not left alone in house unless in crate and never on furniture or beds. \$95 fee per pet. 5. If you have a boat/trailer/RV it you will be able to have 2-3 less cars. 7. Warm months as long as not prevented. 8. Sugarloaf Marina offers seasonal daily boat slips to public on first come basis (check if open). 9. Wood or Pellets provided. NO Outdoor fires on property. 10. Can be used throughout the house and on the decks. 11. From back of house to water level when lake is full. Can be several hundred yards if lake is low. Trail provided to water's edge. 12. Plus 10% lodging tax, cleaning fee \$225-\$495, Additional Guests Fees and any VRBO/Airbnb fees if not direct. Lowest price mid week in winter. Highest price weekends in the Summer and holidays. 14. Although there is an electrical hook up you can use if you discuss with us, you can not use to sleep in to increase the max number of guests. 15. No RV Trailers or Motorhomes. 16. Distance to water and view will vary depending on lake level. 17. Planned but ETA not known yet. Inquire. 18. View depends on lake level. 19. Always remember to bring properly fitted life vests with you for children until 12. Difficult to find right size at marina. 20. Please call to discuss concerns about elderly and handicapped access. 21. Use of Kayaks, Paddle Boards, the Floating Island, the Lake, Bikes, BBQ, Fireplace, Firepit, Heat Lamps, Hot Tubs and all other activities are at your own risk. Call us with questions. (Updated 1-20-2026)