



# TOUR OF RETREAT #19

Lakefront 4000+ Sq. Ft., Luxury Throughout  
Lakehead (Shasta Lake), California

Updated: December 13, 2025

Please also see Part 1, the Overview Brochure that goes with this at:

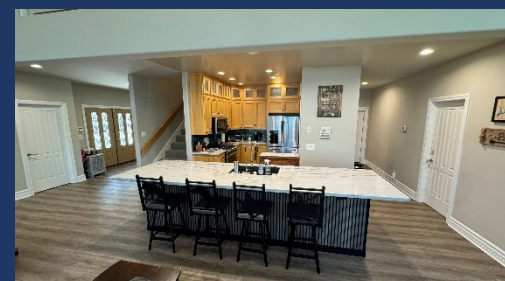
<https://shastalakeshoreretreat.com/Shasta-Lakeshore-Retreat-Info>



## LAKESHORE RETREAT



- ◆ Large 4000+ Square Foot Lakefront/Lake View Luxury Home
- ◆ 8 Sleeping Areas
  - 5 Large Bedrooms, 1 Small Bedroom, 1 Loft, 1 Family Room Sofa Sleeper
- ◆ Sleeps up to 20 (1 King, 9 Queens, 2 Sleeper Sofas)
- ◆ 2 Kitchens, 2 Family Rooms, Large Dining Table for 10, High Ceilings
- ◆ Plentiful flat parking for Cars, Trucks and Boats on Large Paved Side Area
- ◆ Short Walk to Sugarloaf Marina (Boat Slips for Rent, Boat Ramp, Store, Gas)
- ◆ Large Deck with Great Seating for 14, Gas Fire Pit, BBQ, & Hot Tub
- ◆ Indoor Wood Stove
- ◆ Central Heating & Air Conditioning







## LAKE SHORE RETREAT

- ◆ Main Family Room/Kitchen/Dinning (Mid-Level for 3 floors)
  - Spacious, High Ceilings, Big Window Views of Lake
  - Full Kitchen, All New Appliances
  - Dining Table for ten, plus four at Kitchen Island
  - 75" TV, Wood Stove
  - Fully Reclining Sofas and Chairs
  - Excellent for Large Group Gatherings







## LAKESHORE RETREAT

### ◆ Master Bedroom #1 (Upper Level)

- King Bed, Nightstands, Lamps
- Ceiling Fan, TV, Sitting Chairs
- Walk In Closet
- Full Private Bath #1



### ◆ Bedroom #2 (Upper Level)

- Two Queen Beds plus Sofa Sleeper (sleeps 6 total in this large room)
- Kitchenette including Microwave & Small Refrigerator
- Small Balcony to Front of House
- Full Private Bathroom #2







## LAKESHORE RETREAT

### ◆ Bedroom #3 (Upper Level)

- Two Queen Beds (Sleeps 4)
- Dresser, Nightstands, Ceiling Fan
- Full Private Bathroom #3



### ◆ Loft/Bedroom #4 (Upper Level)

- Queen Bed, Dresser, Nightstands
- Views of Lake and Family Room Below
- Bedrooms #1, #2, #3 Pass Through this Area (Not Private)







## LAKESHORE RETREAT

### ◆ Bedroom #5 (Mid-Level)

- Queen Bed
- TV, Dresser, Nightstands, Ceiling Fan, Small Desk
- Door to Full Bathroom #4 (Bathroom also has 2<sup>nd</sup> Door to Hallway)



### ◆ Bathroom #4 (Mid-Level)

- Full Bath
- Door to Common Hallway & Bedroom #5 above



### ◆ Entryway to Main Mid-Level (Serving Mid & Upper Levels)

- Two steps from Driveway to get to this mid-level (Main Floor)
- Note: There is a different entrance for the Lower Level







## LAKESHORE RETREAT

### Large Covered Deck (Mid-Level)

- Seating for 14 on Luxurious Patio Furniture
- Couches, Love Seats, Chairs and Coffee Tables
- BBQ & Gas Fire Pit
- Great Lake & Marina Views

Entrance via Family Room #1 and Stairs on Left Side







## LAKE SHORE RETREAT

### LOWER LEVEL OF HOME (Different Entrance, No Internal Stairs from Mid-Level)

#### ◆ Entrance to Lower Level

- Via the French Doors (see photo below in Family Room) under the main deck
- Requires a walk down the slightly sloped driveway on the Right of the house.
- We only rent all 3 levels at a time normally. We might consider only the upper two floors in the off season for reduced price. Inquire [ShastaRetreats@gmail.com](mailto:ShastaRetreats@gmail.com)



#### ◆ Family Room #2 and Kitchen #2

- Family Room with Sleeper Sofa (Sleeps 2), TV, Views to Lake
- Full Kitchen but no dishwasher
- Seating for four at Kitchen Island







## LAKE SHORE RETREAT

- ◆ Bathroom #5 (Lower Level)
  - Shower, Toilet and Sink
  - Door to Family Room Area



- ◆ Bedroom #6 (Lower Level)
  - Two Queens (Sleeps 4)
  - TV, Nightstand, Closet, Ceiling Fan, Mini Split for Air/Heat



- ◆ Small Bedroom #7 (Lower Level)
  - Very Small Bedroom with Queen (Sleeps 2)
  - For Sleeping Only, Low Ceiling at Bed and best if part of same family as in Bedroom #6
  - Door from this area goes into Bedroom #6







## LAKESHORE RETREAT

- ◆ Lower-Level Patio, Large Backyard, & Boat Parking
  - Four Loung Chairs, Hot Tub, Gas Fire Pit with Chairs Around
  - Easy gradual walk to lake and marina
  - Accessible from upper level via the gradual slope driveway on the right and the stairs from the deck on the left side.

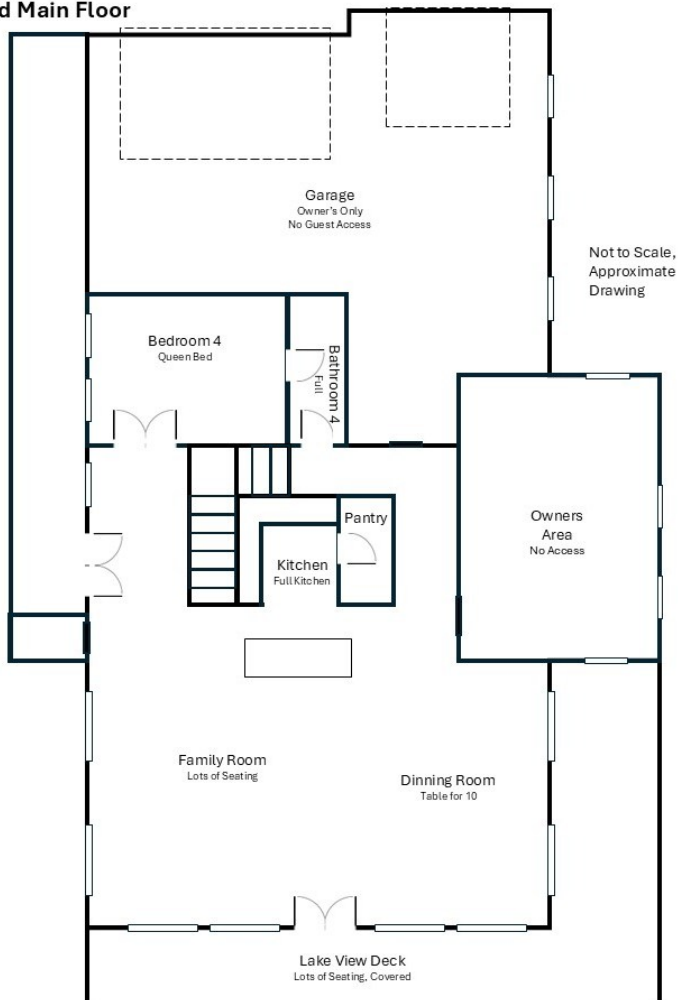




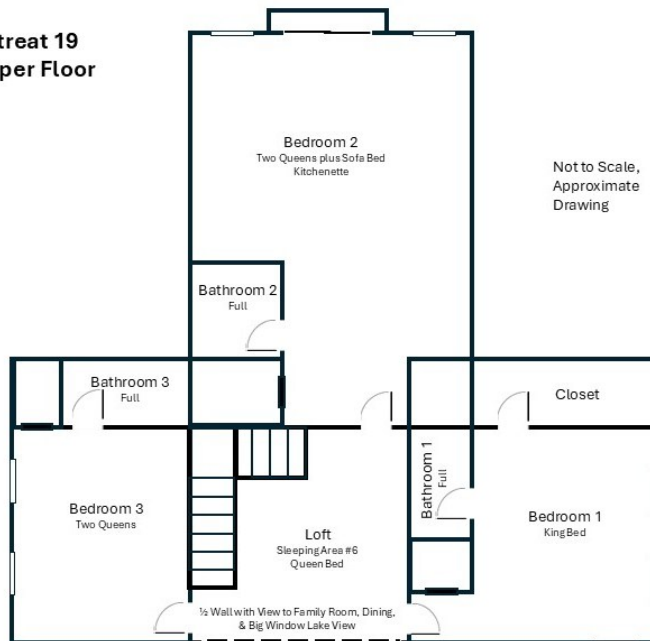


# LAKESHORE RETREAT

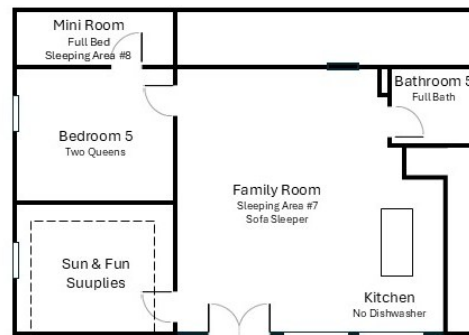
## Retreat 19 Mid Main Floor



## Retreat 19 Upper Floor



## Retreat 19 Lower Floor



Reservations Available on All Three Platforms

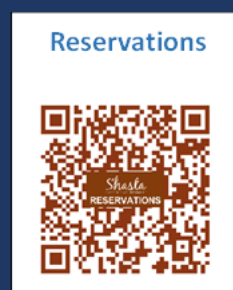
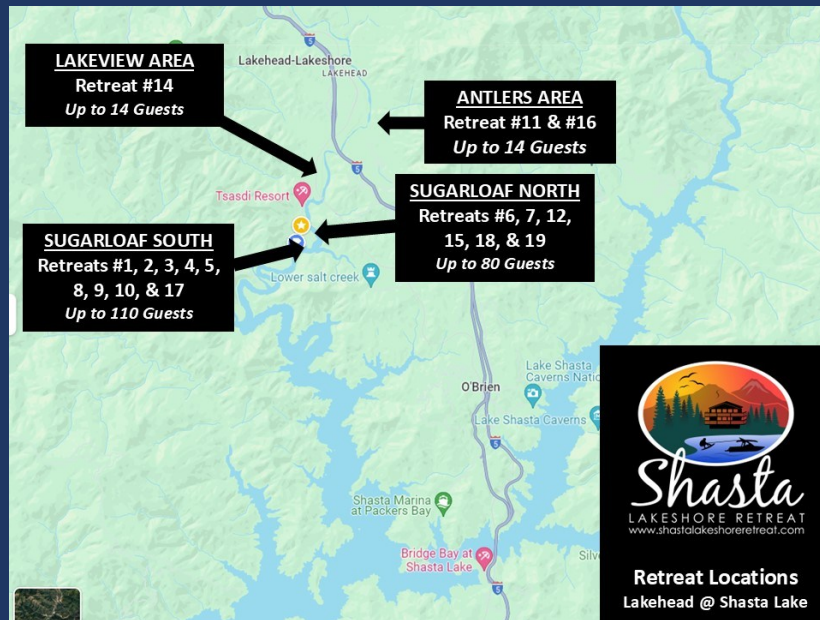


- Click on Any Logo -





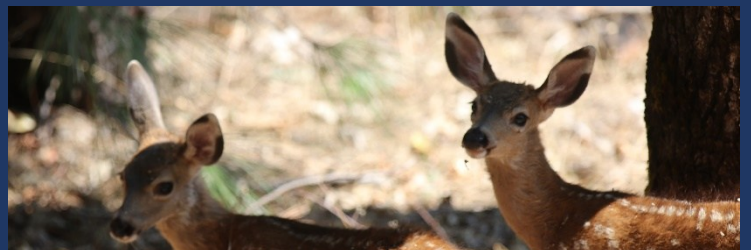
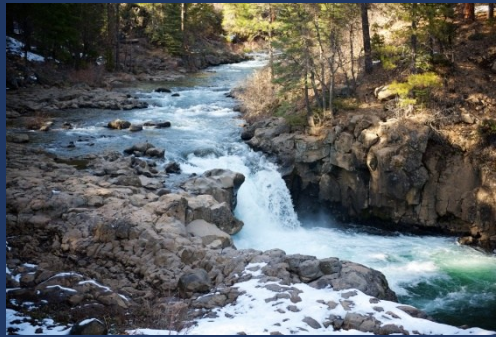
# LAKE SHORE RETREAT







# LAKESHORE RETREAT







# LAKE SHORE RETREAT

Retreat	Item	Retreat #19
1	~ Sq. Footage & # of Levels	4000+, 3 Floors, Lakefront, Hot tub
2	MAX. Sleep Number	20 (Inquire on Adults)
3	# Bedrooms/Lofts	7
4	Reservations/Stays	Now/Now
5	Bedroom 1 (Master)	King, Upper floor, lake view, nightstands, Large walk in closet, ceiling fan, Private full bath, TV, Sleeps 2
6	Bedroom 2	2 queen beds, upper level, plus sofa sleeper, Kitchenette, TV, small balcony to front of house, nightstands, dresser, in very large room. Private full bath. Sleeps 6.
7	Bedroom 3	2 queen beds, upper level, nightstands, TV, ceiling fan, Private full Bath. Sleeps 4
8	Bedroom 4	Queen Bed, Loft, Upper Level, night stands. Beautiful view of lake and room below. Bedrooms 1, 2 and 3 walk through this area to get to the 3 bedrooms upstairs so not private. Sleeps 2
9A	Bedroom 5	Queen Bed, Desk, TV, Dresser, Sleeps 2
9B	Bedroom 6	2 Queen Beds, Lower Level, ceiling fan, TV, nightstands. Sleeps 4.
9C	Small Bedroom 7	Queen Bed, Lower Level, very small room, low ceiling for bed. Tucked away room off other bedroom. Must pass through Bedroom 5 to get there. Sleeps 2
10	Extra Room	2nd Family Room on Lower Level: TV, Queen Sleeper Sofa, love seat, coffee table, TV console table, Ceiling fan, island with 4 bar stools, Lake views. Sleeps 2.
11	Family Area (off Kitchen)	Mid Level: 75 inch smart TV, Extra large chaise sofa that fully reclines all areas, 2 recliner chairs, coffee table, Extra large log dining table seats 10, Lake view
12	Extra Bedding	See Family Room 2 in "Extra Room"
13	# of Full Bathrooms	5
14	Bathroom 1	Full Private Bath for Master Bedroom 1, upper Level, two sinks, toilet, Tub/Shower Combo.
15	Bathroom 2	Full Private Bath for Bedroom 2, upper level, sink, toilet, shower
16	Bathroom 3	Full Private Bath for Bedroom 3, upper level. two sinks, toilet, Tub/Shower Combo.
17A	Bathroom 4	Full Bath with door to Bedroom 5 and hallway, Mid Level, sink, toilet, Shower.
17B	Bathroom 5	Full Bath with door to family room. Shower, Sink, Toilet
18	Kitchen(s)	Two Kitchens: 1. Mid Level: Brand new Kitchen Aid appliances, Fridge, Dishwasher, Gas range, icemaker, Lakeview 2. Remodeled in 2023 with painted cabinets and quartzite countertops, Refrigerator, Electric glass top stove, Microwave, Lake view
19	Refrigerator/Freezers	1 Mid Level, 1 Lower Level, 1 Under Counter in Bedroom 2
20	Fireplace or Stove	Indoor Wood stove
21	Cooling	Central Air, Ceiling Fans (Mini-Splits on Lower level)
22	Heating	Central Heat, (Mini-Splits on Lower Level)
23	Inside Dining	Mid Level: 10 at table, 4 at island counter. Lower Level: 4 at kitchen island.
24	Outside Dining	Yes on outdoor couches and coffee tables on mid level deck. Round Table and 5 chairs on lower level
25	Washer & Dryer	Yes
26	Fast Wi-Fi	Yes (Starlink)
27	TV	5, Dish Network & Smart TVs
28	Indoor Games	Board Games, Cards
29	Outdoor Games	Cornhole & Horseshoes
30	Smoking or Vaping?	NO!
31	Car/Truck Parking (without boat)	Multiple, extra large driveway, Boats, trailer
32	Boat or ATV Trailer Parking	Yes, Flat paved area. Couple boats and trucks.
33	Hot Tub	Yes, Lower Level
35	Gas BBQ (Propane Provided)	Yes, Mid Level Deck.
36	Heat Lamp (Propane Provided)	Yes
38	Gas Fire Pit (Propane Provided)	Yes
40	Kayaks	2
41	Paddle Boards	2
42	Trail/Path to Marina	Sugarloaf Marina is Seasonal, normally open from May 1 to Sept 30. Next door to R1-5, 8-10, 17. Close walk from R6, R7, R12, R15, R18, R19 Slips are \$55/night (2025). Antlers is open earlier and long and have better slips (more protected) and might be less in price. R11, and R16 should use Antlers.
43	Lake Access/Trail	Yes, Lakefront w/beach area when full
44	Boat Anchoring off shore	Yes, when lake is near top, otherwise no
46	Boat Slip at Marina	Sugarloaf Marina is Seasonal, normally open from May 1 to Sept 30. Next door to R1-5, 8-10, 17. Close walk from R6, R7, R12, R15, R18, R19 Slips are \$55/night (2025). Antlers is open earlier and long and have better slips (more protected) and might be less in price. R11, and R16 should use Antlers.
47	House Location	Sugarloaf area of Lakehead, steps to water when full, 5 min walk to marina. Short walk to all other retreats excepts #11, #14, #16. Closest to Retreat 6 & 15.
48	Distance to Lake (When Full)	200 Feet (Will Vary Greatly, Inquire)
49	Hammocks (Summer)	
50	Shaded Deck	Yes, covered patio
51	Unshaded Deck	Yes, large gravel yard with beach chairs, gas fire pit.
52	Pets Allowed	Yes, Approved only Well Trained Dogs, \$95 (Plus Tax)
53	Reservation Sites	Our Website (70%), VRBO (15%), Airbnb (15%). Lower cost/fees on our website at <a href="https://shastalakeshoreretreat.com/reservations/">https://shastalakeshoreretreat.com/reservations/</a>
54	Minimum Nights	2-7 Nights depending on time of year
57	Other (things not mentioned)	Linens, Bedding, Pillows, Towels, Laundry Soap, Dish Soap, Ice Maker, Coffee Maker (Keurig and drip, bring your favorite pods), Coffee filters, Toaster, Pots/Pans, Plates, Bowls, Glasses, Wine Glasses, Utensils, Board Games, Dice, Corn Hole, Horse Shoes, Salt, Pepper, Some seasonings, Paper Towels*, Toilet Paper*, Air Freshener and Propane*. *Limited Qty, see welcome book for details.

1. BR=Bedroom, 2. LV=Lakeview 3. Stairs=Must take stairs to access. 4. Dogs must be well trained, no medical issues, not left alone in house unless in crate and never on furniture or beds. \$95 fee per pet. 5. If you have a boat/trailer/RV it you will be able to have 2-3 less cars. 7. Warm months as long as not prevented. 8. Sugarloaf Marina offers seasonal daily boat slips to public on first come basis (check if open). 9. Wood or Pellets provided. NO Outdoor fires on property. 10. Can be used throughout the house and on the decks. 11. From back of house to water level when lake is full. Can be several hundred yards if lake is low. Trail provided to water's edge. 12. Plus 10% lodging tax, cleaning fee \$225-\$495, Additional Guests Fees and any VRBO/Airbnb fees if not direct. Lowest price mid week in winter. Highest price weekends in the Summer and holidays. 14. Although there is a electrical hookup you can use if you discuss with us, you can not use to sleep in to increase the max number of guests. 15. No RV Trailers or Motorhomes. 16. Distance to water and view will vary depending on lake level. 17. Planned but ETA not known yet. Inquire. 18. View depends on lake level. 19. Always remember to bring properly fitted life vests with you for children until 12. Difficult to find right size at marina. 20. Please call to discuss concerns about elderly and handicapped access. 21. Use of Kayaks, Paddle Boards, the Floating Island, the Lake, Bikes, BBQ, Fireplace, Firepit, Heat Lamps, Hot Tubs and all other activities are at your own risk. Call us with questions. (Updated 12-13-2025)