



TOUR OF RETREAT #3

Lakefront Vacation Rental
Shasta Lake, California

Updated: March 1, 2024, Part 2

Please also see Part 1, the Overview Document that goes with this at:

<https://shastalakeshoreretreat.com/Shasta-Lakeshore-Retreat-Info>



RETREAT #3 (~2200 Square Feet)

- ◆ Lakefront, Sleeps 14
- ◆ Sleeps up to 14 (1 King, 4 Queen, 2 Twins, 2 Rollaway Twins)
- ◆ 5 Bedrooms/Lofts, 2 Full Bathrooms, Kitchen/Main Family Room with great Window Views!
- ◆ Large Covered Deck, BBQ, Gas Fire Pit, Hot Tub
- ◆ Indoor Wood Burning Fireplace (wood supplied)
- ◆ New Kitchen in 2024





LAKE SHORE RETREAT



Main Room/Kitchen

- Large main room for your group to get together. Includes large L-shaped leather couch, coffee table, ceiling fan, 65" large flat screen HDTV & dining table that sits 6. Lots of views of the deck, lake & mountains. Access to the deck looking out at the lake.
- Full kitchen including electric stove/oven range, dishwasher, refrigerator, microwave, sink and counters. Two chairs and table in nook.
- Three bar stools at bar counter between main room and kitchen.
- Enjoy the many photos of the Shasta Area including the lake, marina, mountains, and wildlife.
- The entire downstairs has new wood flooring and paint throughout.



LAKESHORE RETREAT



- ◆ Bedroom #1 on main floor
 - Queen bed, Dresser, Nightstand, Ceiling Fan, Closet, and view of front yard.



- ◆ Bedroom #2 on main floor
 - Queen bed, Trundle Bed (two twins), Dresser, HDTV, ceiling fan, closet and view of front and side yard. Side door exit to side deck.



- ◆ Bathroom #1 on main floor
 - Bath/shower combo with single sink and toilet. A little dated but functional room. Access from hallway.





- ◆ Master Bedroom (Bedroom #3) on main floor.
 - King Bed, dresser, nightstand, HDTV & view of lake and side yard.
 - Large Walking Closet and Sitting Area close to lake with wall that can be closed for additional sleeping.
 - One of the two bathrooms in this house is accessible from this room.
- ◆ Bathroom #2 on main floor
 - Shower, two sinks, toilet, and entry only from Master/BD #3





LAKE SHORE RETREAT



- ◆ 40' wide Large Covered Exterior Deck
 - Great views with patio tables for up to 12, gas BBQ
 - The distance to the water can vary from 20 feet to several hundred yards as the level drops.
 - Note: At the time of these photos, we had not updated the floor of the deck.



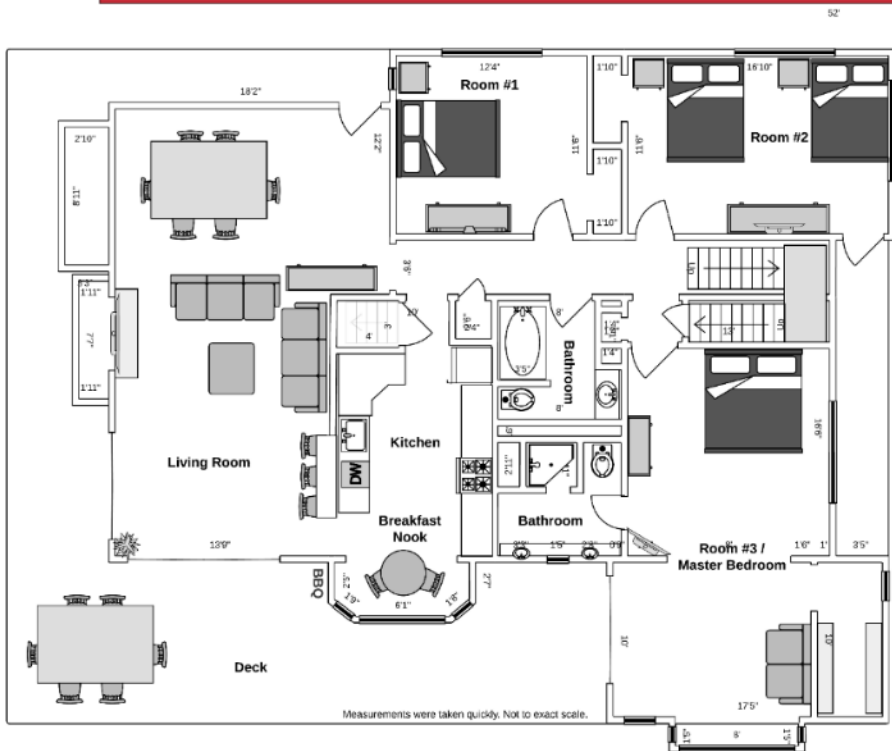
- ◆ Bedroom/Loft #4 on upper floor via standard staircase
 - Queen bed with dresser, mirror, nightstand and new carpet.
 - This is a loft looking down on main room with great lake views from its elevated location.



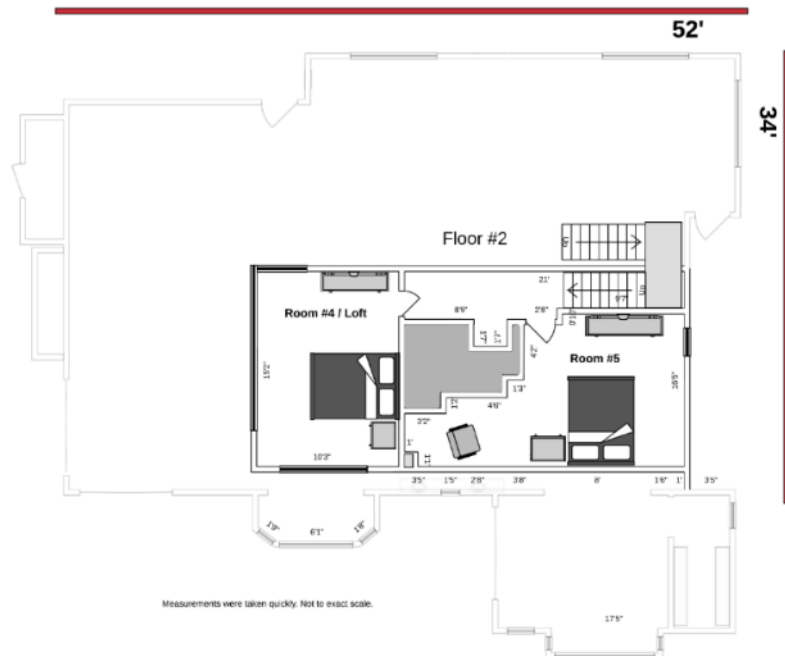
- ◆ Bedroom #5 on upper floor
 - One Queen sized bed, dresser, mirror, nightstand with limited view of side yard.



LAKESHORE RETREAT



Shasta Lakeshore Retreat #3 Main Floor Plan



Shasta Lakeshore Retreat #3 Upper Floor Plan



LAKE SHORE RETREAT



<https://www.vrbo.com/1799588>



<https://airbnb.com/h/shasta-retreat-3>

Shasta

LAKE SHORE RETREAT
www.shastalakeshoreretreat.com

7 Awesome Lake Homes

"The Best at Shasta Lake"

600+ FIVE STAR REVIEWS

★★★★★



Retreat	Type	Square Feet	Sleeps	Bedrooms/Baths
#1	Lakefront	~1500	10	3/2
#2	Lakefront	~2000	14	4/2
#3	Lakefront	~2200	14	5/2
#4	Lakefront	~1850	12	4/3
#5	Lakeview	~1300	10	3/2
#9	Lakeview	~1300	8	3/2
#10	Lakefront	~2200	14	4/3+



Shasta
LAKE SHORE RETREAT

www.shastalakeshoreretreat.com

All 7 Homes on the most popular small street in Sugarloaf area of Lakehead

Retreat 6 & 7: Only a 5 Min Walk



Shasta Area
Information



Shasta Lakeshore
Retreat Website



Lake Level



Availability
Calendar



Reservations





LAKESHORE RETREAT

#	Item	Retreat #3
1	~ Sq. Footage & # of Levels	~2250, 2 Floors, Lakefront
2	MAX. Sleep Number	14 (max # of adults =12)
3	# Bedrooms/Lofts	5
4	Reservations/Stays	Now/Now
5	Bedroom 1 (Master)	King, Main Parking Level Floor, Dresser, Mirror, Nightstand, Extra Closed Off Area, Closet, Ceiling Fan, BR Door, HDTV, LV, Slider to Deck
6	Bedroom 2	Queen, Dresser, Mirror, Closet, Ceiling Fan, Main Floor
7	Bedroom 3	Full, Trundle (2 twins), Dresser, Ceiling Fan, Closet, Main Floor, HDTV
8	Bedroom 4	Queen, Dresser, Stairs3, Loft, LV
9	Bedroom 5	Queen, Stairs3, Lower Ceiling
11	Family Area (off Kitchen)	Large L Shaped Sofa, Coffee Table, 65" HDTV, LV, sliders to deck.
12	Extra Bedding	2 Roll-Away Twins10, Air Mattress
13	# of Full Bathrooms	2
14	Bathroom 1	Main Fl, Tub/Shower, Toilet, Sink, Door to Common Area
15	Bathroom 2	Main Floor, Shower, Toilet, 2 sinks, Entry via Kitchen and BD1.
18	Kitchen	(New Kitchen in 2024) Refrig/Freezer with Ice Maker, Stove, Oven, Microwave, Dishwasher, Bar Counter, LV
19	Refrigerator/Freezers	1 Extra Large
20	Fireplace or Stove	Indoor Fireplace9, Main Floor
21	Cooling	Central Air, Ceiling Fans, Fans
22	Heating	Central Heat
23	Inside Dining	6 at Table, 3 at counter, 3 at sm table
24	Outside Dining	10 at Two Tables
25	Washer & Dryer	Yes
26	Fast Wi-Fi	Yes (20Mdown 3Mup)
27	TV	3 SmarthDTV, DirecTV, Netflix
28	Indoor Games	Board, Card, Dice, Etc.
29	Outdoor Games	Corn Hole, Horse Shoes
30	Smoking or Vaping?	NO!
31	Car/Truck Parking (without boat)5	3 on sloped driveway and 1 in front on street.
32	Boat or ATV Parking (NO Motorhomes/Sleeping Trailers)	Back down driveway or up on street unhooked. More challenging than others.
33	Hot Tub	Yes
35	Gas BBQ (Propane Provided)	Yes
37	Outside Ice Chest (Summer)	Yes
38	Gas Fire Pit (Propane Provided)	Yes
39	Floating Island (Summer)	Shared with Retreat 1, 2, 3, 4, 5, 9 and 10. Conditional on Forest Service not asking us to remove.
40	Kayaks	2
42	Trail/Path to Marina	Yes
43	Lake Access/Trail	Yes
44	Boat Anchoring off shore	Yes
45	Bouy(s) for boats off shore	Yes7
46	Boat Slip at Marina	Sugarloaf Marina is Seasonal, normally open from Memorial Day to Labor Day (Sometimes longer), Next door to R1-5, 9 & 10. Close to R6, R7, R12, R15. Slips were \$55/night in 2023. Antlers might be less in price.
47	House Location	Lakefront, 5th Home on left on Daisy Ln, Sugarloaf Area of Lakehead. Next Door to R4 & R10.
48	Distance to Lake (When Full)	25 Feet11
49	Hammocks (Summer)	1
50	Shaded Deck	Yes, LV
51	Unshaded Deck	Yes, away from house in yard
52	Pets Allowed4	Yes, Approved only Well Trained Dogs4, \$120 Fee each
53	Reservation Sites14	Our Website (70%), VRBO (15%), Airbnb (15%). Lower cost/fees on our website at https://shastalakeshoreretreat.com/reservations/
54	Minimum Nights	2-7 Nights depending on time of year
55	Whole Home Auto Generator	Portable Only with cords, 12KW
56	Kids Stuff?	Port Crib
57	Other (things not mentioned)	Good sized lot with water on almost two sides. Play Pin on Request. Remodel of Kitchen complete in Feb 2024.
58	Stairs/Steps20	Main Floor - 1 step from parking (kit, fam, 3 bedrooms, 2 bath, deck), stairs to 2 bedrooms
59	2024 Pricing12	~\$261-\$994+ a Night12
60	Fire Safety	Fire Extinguishers on each floor, CO2 Detectors on Each Floor, Smoke Detectors in Bedrooms and Hallways
61	Other	Linens, Bedding, Pillows, Towels, Laundry Soap, Dish Soap, Ice Maker, Coffee Maker (R4, R8, R14 has Keurig, bring your favorite cups), Coffee filters, Toaster, Pots/Pans, Plates, Bowls, Glasses, Wine Glasses, Utensils, Board Games, Card Games, Dice, Corn Hole, Horse Shoes, Salt, Pepper, Some seasonings, Paper Towels*, Toilet Paper*, Air Freshener and Propane*. *Limited Qty, see welcome book for details.

1. BR=Bedroom, 2. LV=Lakeview 3. Stairs=Must take stairs to access. 4. Dogs must be well trained, no medical issues, not left alone in house unless in crate and never on furniture or beds. \$120 fee per pet. 5. If you have a boat/trailer/RV it you will be able to have 2-3 less cars. 7. Warm months as long as not prevented. 8. Sugarloaf Marina offers seasonal daily boat slips to public on first come basis (check if open). 9. Wood or Pellets provided. NO Outdoor fires on property. 10. Can be used throughout the house and on the decks. 11. From back of house to water level when lake is full. Can be several hundred yards if lake is low. Trail provided to water's edge. 12. Plus 10% lodging tax, cleaning fee \$200-\$350, and any VRBO/Airbnb fees if not direct. Lowest price mid week in winter. Highest price weekends in the Summer and holidays. 14. Although there is a electrical hook up you can use if you discuss with us, you can not use to sleep in to increase the max number of guests. 15. No RV Trailers or Motorhomes. 16. Distance to water and view will vary depending on lake level. 17. Planned but ETA not known yet. Inquire. 18. View depends on lake level. 19. Always remember to bring properly fitted life vests with you for children until 12. Difficult to find right size at marina. 20. Please call to discuss concerns about elderly and handicapped access. Additional info on website. (Updated 3-1-2024)