



TOUR OF RETREAT #4

Lakefront Vacation Rental
Shasta Lake, California

Updated: February 26, 2025

Part 2

Please also see Part 1, the Overview Document that goes with this at:

<https://shastalakeshoreretreat.com/Shasta-Lakeshore-Retreat-Info>



LAKESHORE RETREAT



RETREAT #4 (~1850 Square Feet)

- ◆ Lakefront
- ◆ Sleeps up to 12 (3 Queens, 2 Fulls, 4 Twins)
- ◆ 4 Bedrooms, 3 Full Baths, Game Room, Kitchen/Main Family Room Lake Views!
- ◆ Two decks with a BBQ, Gas Fire Pit, Heat Lamp
- ◆ Indoor Wood Burning Fireplace (wood supplied)
- ◆ Two Kayaks and Two Paddleboards for your use
- ◆ One-acre large lot with lots of privacy (largest of all the homes)



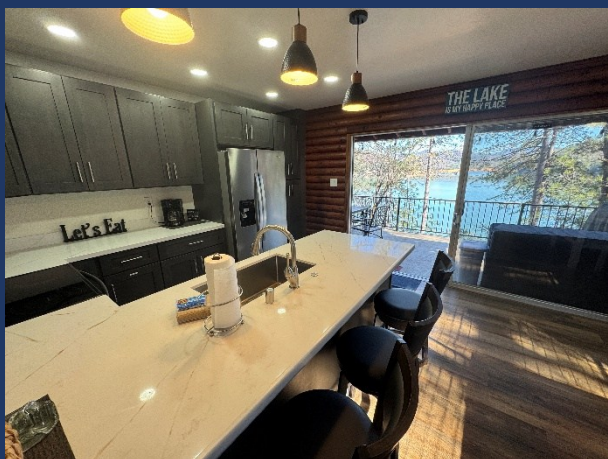


LAKESHORE RETREAT

TOUR OF RETREAT #4:

◆ Main Room/Kitchen

- Comfortable main room for your group to get together. Includes a large couch, coffee table, ceiling fans, 52" large flat screen HDTV & dining table that sits 6. Lots of views of the deck, lake & mountains. Access to the deck looking out at the lake.
- Full kitchen including electric stove/oven range, dishwasher, refrigerator, and microwave.
- Three bar stools at bar counter between kitchen and dining area.
- Enjoy the many photos of the Shasta Area including the lake, marina, mountains, and wildlife.
- Nice wood flooring throughout.





LAKESHORE RETREAT



- ◆ Master Bedroom #1 on main floor
 - Queen bed, Dresser, Nightstand, Ceiling Fan, Closet, View of Lake and large slider to deck
 - Full Bath with access from Bedroom



- ◆ Bedroom #2 on main floor
- ◆ Bunk bed including a full and twin sized bed, closet, and view of front yard



- Bedroom #3 on main floor
- Queen bed with view of front and side yard

- ◆ Bathroom #2
 - Full bath on main floor with access by all with Tub/Shower combo





LAKE SHORE RETREAT



- ◆ 40' Wide Deck with Great Views of the Lake & Mountains
 - Patio Table for 6 plus 2 extra chairs, BBQ
 - Awesome views of the lake, marina, boat ramp and mountains
 - Upper and Lower Decks



LAKESHORE RETREAT



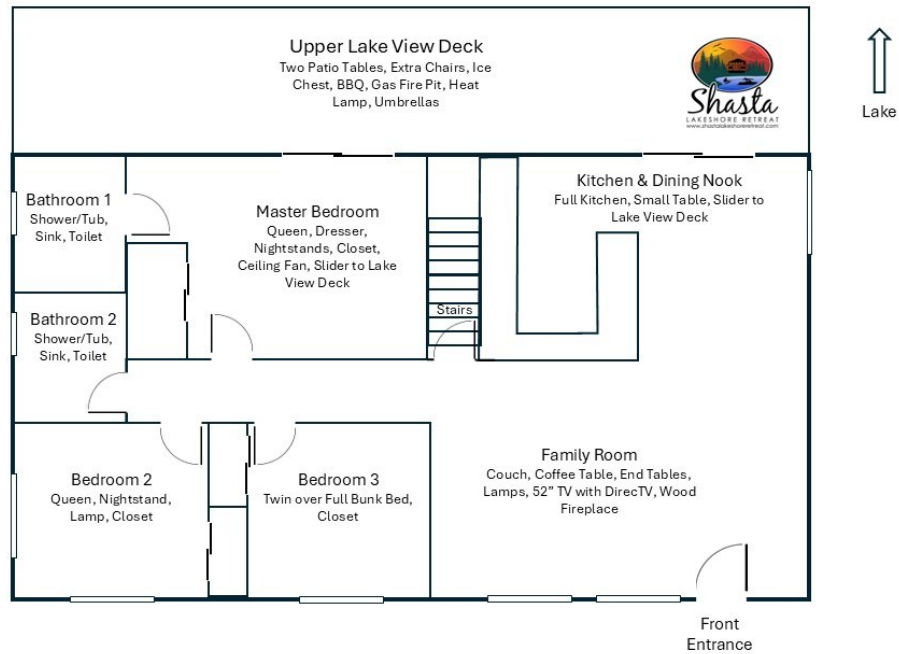
- ◆ Large Bedroom #4 Downstairs
 - Queen Bed & Two Bunk Beds with views of the lake



- ◆ Large Game Room and 3rd Bathroom Downstairs
 - Foosball and Air Hockey Game, 2nd Refrigerator, Futon and HDTV
 - Door to lower covered deck

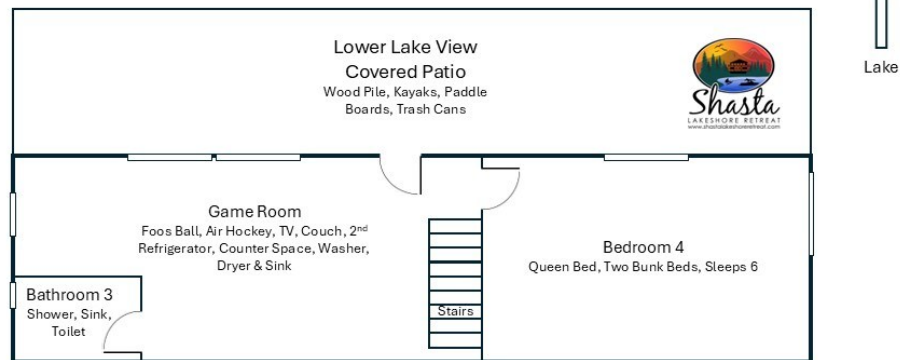


Retreat 4, Main Upper Floor



Not to Scale, Approximate Drawing

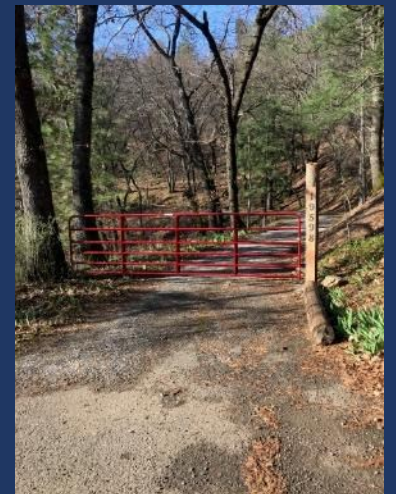
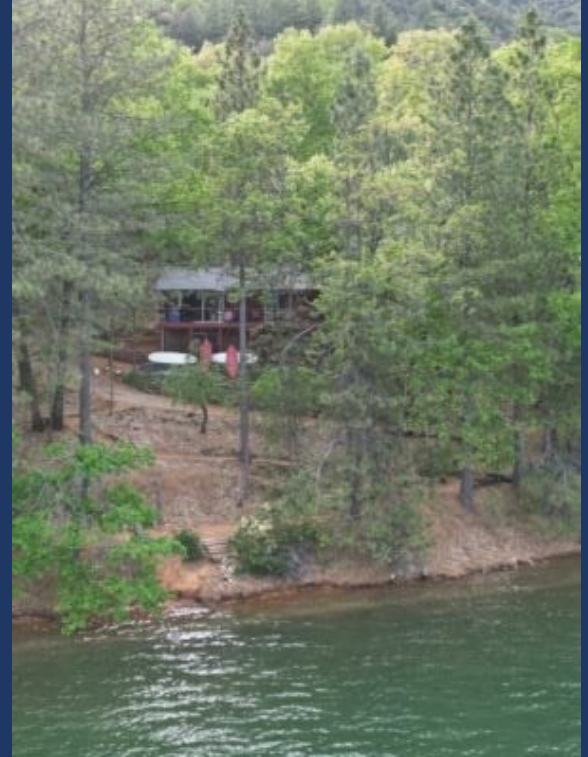
Retreat 4, Lower Floor



Not to Scale, Approximate Drawing



LAKESHORE RETREAT



Lower Deck and Large One Acre Lot

- ◆ Over 500 feet of shoreline

Large Loop Driveway that allows multiple trucks and boats
(in serial fashion)



Shasta LAKESHORE RETREAT

Reservations Available on All Three Platforms



- Click on Any Logo -

Shasta LAKESHORE RETREAT
www.shastalakeshoreretreat.com

7 Awesome Lake Homes

"The Best at Shasta Lake"

600+ FIVE STAR REVIEWS

★★★★★



Retreat	Type	Square Feet	Sleeps	Bedrooms/Baths
#1	Lakefront	~1500	10	3/2
#2	Lakefront	~2000	14	4/2
#3	Lakefront	~2200	14	5/2
#4	Lakefront	~1850	12	4/3
#5	Lakeview	~1300	10	3/2
#9	Lakeview	~1300	8	3/2
#10	Lakefront	~2200	14	4/3+



All 7 Homes on the most popular small street in Sugarloaf area of Lakehead
Retreat 6 & 7: Only a 5 Min Walk



Shasta Area Information



Shasta Lakeshore Retreat Website



Lake Level



Availability Calendar



Reservations





LAKE SHORE RETREAT

#	Item	Retreat #4
1	~ Sq. Footage & # of Levels	~1850, 2 Floors, Lakefront
2	MAX. Sleep Number	12 (max # of adults =10)
3	# Bedrooms + Lofts	4
4	Reservations/Stays	Now/Now
5	Bedroom 1 (Master)	Queen, Main Parking Level Floor, Dresser, Mirror, Nightstand, Closet, Private Bathroom, LV, Sider to Deck
6	Bedroom 2	Queen, Closet, Main Floor
7	Bedroom 3	Full/Twin Combo Bunk Bed, Closet, Main Floor
8	Bedroom 4	Queen plus two Bunk Beds, Closet, Stairs3, LV, Sleeps 6
10	Extra Room	Game Room. Foosball, 2nd Refrig., LV, Air Hockey, Ping Pong (Summer), Washer/Dryer, Deck. Lower Floor.
11	Family Area (off Kitchen)	Large L Shaped Sofa, Coffee Table, 52" HDTV, Wood Fireplace
13	# of Full Bathrooms	3
14	Bathroom 1	Main Floor, Tub/Shower, Toilet, Sink, Door to Master
15	Bathroom 2	Main Floor, Tub/Shower, Toilet, Sink, Common Access
16	Bathroom 3	Lower Fl, Stairs, Shower, Toilet, Sink, Entry-Game Rm
18	Kitchen	Refrig/Freezers w/Ice Maker, Stove, Microwave, Dishwasher, Bar Counter, LV, slider to deck
19	Refrigerator/Freezers	2 Large
20	Fireplace or Stove	Indoor Fireplace9, Main Floor
21	Cooling	Central Air, Ceiling Fans, Fans
22	Heating	Central Heat
23	Inside Dining	6 at Table, 3 at Counter
24	Outside Dining	Two Tables, 10 total
25	Washer & Dryer	Yes
26	Fast Wi-Fi	Yes (20Mdown 3Mup)
27	TV	2 HDTVs, DirecTV
28	Indoor Games	Board, Card, Dice, Etc.
29	Outdoor Games	Corn Hole, Horse Shoes
30	Smoking or Vaping?	NO!
31	Car/Truck Parking (without boat)5	5+ on large loop around house
32	Boat or ATV Parking (NO Motorhomes/Sleeping Trailers)	Large Gravel Loop. Little steep in one area. Talk to Lori/Dave
35	Gas BBQ (Propane Provided)	Yes
36	Heat Lamp (Propane Provided)	Yes
37	Outside Ice Chest (Summer)	Yes
38	Gas Fire Pit (Propane Provided)	Yes
39	Floating Island (Summer)	Shared with Retreat 1, 2, 3, 4, 5, 8, 9, 10 & 17.
40	Kayaks	2
41	Paddle Boards	2
42	Trail/Path to Marina	Via Street
43	Lake Access/Trail	Yes
44	Boat Anchoring off shore	Yes
45	Buoy(s) for boats off shore	Yes7
46	Boat Slip at Marina	Sugarloaf Marina is Seasonal, normally open from May 1 to Sept 30. Next door to R1-5, 8-10, 17. Close walk from R6, R7, R12, R15, R18, R19 Slips are \$55/night (2024). Antlers is open earlier and long and have better slips (more protected) and might be less in price. R11, and R16 should use Antlers.
47	House Location	Lakefront, Road on end of Cur-d-sac on Daisy Lane, Sugarloaf Area of Lakenead. Next to R3 & R9. Same Street at R1, 2, 3, 5, 8, 9, 10, 17. 5-10 min walk to R6, 7, 12, 15, & 19.
48	Distance to Lake (When Full)	40 Feet11
49	Hammocks (Summer)	2
50	Shaded Deck	Yes, LV
51	Unshaded Deck	Yes, LV
52	Pets Allowed4	Yes, Approved only Well Trained Dogs4, \$95 Fee each
53	Reservation Sites14	Our Website (70%), VRBO (15%), Airbnb (15%). Lower cost/fees on our website at https://shastalakeshoreretreat.com/reservations/
54	Minimum Nights	2-7 Nights depending on time of year
57	Other (things not mentioned)	Large 1 acre lot. Home more rustic. Very nice setting. Larger seating area. Great lake views. Trails to Lake.
58	Stairs/Steps20	Main Floor - 3 steps from parking (kit, fam, 3 bedrooms, 2 bath, deck), steep stairs to bedroom/game room
59	2025 Pricing12	~\$260-\$830 a Night12
60	Fire Safety	Fire Extinguishers on each floor, CO2 Detectors on Each Floor, Smoke Detectors in Bedrooms and Hallways
61	Other	Linens, Bedding, Pillows, Towels, Laundry Soap, Dish Soap, Ice Maker, Coffee Maker (R4, R8, R14 has Keurig, bring your favorite cups), Coffee filters, Toaster, Pots/Pans, Plates, Bowls, Glasses, Wine Glasses, Utensils, Board Games, Card Games, Dice, Corn Hole, Horse Shoes, Salt, Pepper, Some seasonings, Paper Towels*, Toilet Paper*, Air Freshener and Propane*. *Limited Qty, see welcome book for details.

1. BR=Bedroom, 2. LV=Lakeview 3. Stairs=Must take stairs to access. 4. Dogs must be well trained, no medical issues, not left alone in house unless in crate and never on furniture or beds. \$95 fee per pet. 5. If you have a boat/trailer/RV it you will be able to have 2-3 less cars. 7. Warm months as long as not prevented. 8. Sugarloaf Marina offers seasonal daily boat slips to public on first come basis (check if open). 9. Wood or Pellets provided. NO Outdoor fires on property. 10. Can be used throughout the house and on the decks. 11. From back of house to water level when lake is full. Can be several hundred yards if lake is low. Trail provided to water's edge. 12. Plus 10% lodging tax, cleaning fee \$225-\$495, Additional Guests Fees and any VRBO/Airbnb fees if not direct. Lowest price mid week in winter. Highest price weekends in the Summer and holidays. 14. Although there is a electrical hook up you can use if you discuss with us, you can not use to sleep in to increase the max number of guests. 15. No RV Trailers or Motorhomes. 16. Distance to water and view will vary depending on lake level. 17. Planned but ETA not known yet. Inquire. 18. View depends on lake level. 19. Always remember to bring properly fitted life vests with you for children until 12. Difficult to find right size at marina. 20. Please call to discuss concerns about elderly and handicapped access. 21. New to our collection of homes, replacing a previous Retreat 8. 22 New to our collection of homes, replacing a previous Retreat 17. Call us with questions. (Updated 10-2-2024)