



Shasta

LAKESHORE RETREAT
www.shastalakeshoreretreat.com



TOUR OF RETREAT #5

Lakeview Vacation Rental
Shasta Lake, California

Updated: May 9, 2026

Part 2

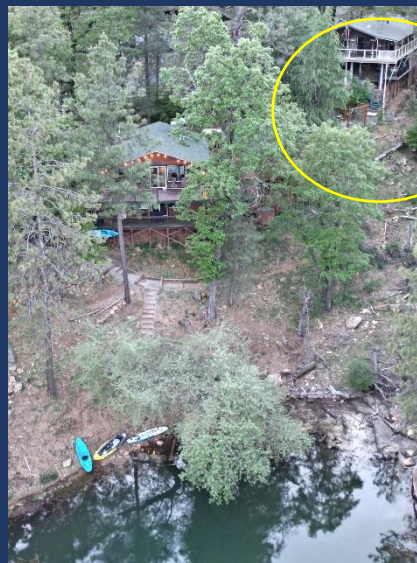
Please also see Part 1, the Overview Brochure that goes with this at:

<https://shastalakeshoreretreat.com/Shasta-Lakeshore-Retreat-Info>



RETREAT #5 (~1200 Square Feet)

- ◆ LAKEVIEWS, next to Retreat #1
- ◆ Great SINGLE STORY...great for groups that want to or need to avoid stairs
- ◆ Sleeps up to 10 (Max of 9 Adults)
- ◆ 1 King, 2 Queens, Bunk Bed with two twins, 2 Rollways
- ◆ 3 Bedrooms, 2 Full Bath, Kitchen/Main Family Room Lake Views!
- ◆ Covered wrap around deck a BBQ, Gas Fire Pit, Heat Lamp
- ◆ Indoor Wood Burning Stove (wood supplied)
- ◆ Good level parking. Modern Kitchen & Family Room.

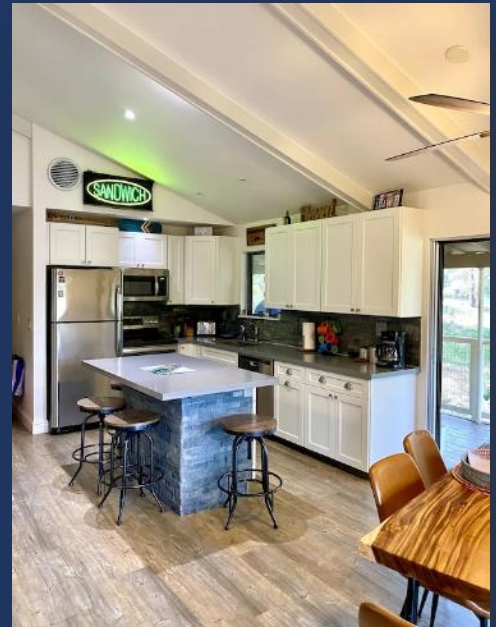




LAKESHORE RETREAT

◆ Main Room/Kitchen

- Recently remodeled front room with two large sliders look out on deck and lake. Great seating via multiple couches and chairs. 64" HDTV, high ceilings, coffee table, and dining table for six plus four bar stools. Lots of Access to the deck looking out at the lake.
- Full kitchen including electric stove/oven range, dishwasher, refrigerator, and microwave. 2nd Refrigerator on deck just outside the kitchen.
- Nice wood flooring throughout.
- Wood burning Stove





LAKE SHORE RETREAT

- ◆ Master Bedroom #1
 - King bed, Nightstands, Ceiling Fan, Closet, HDTV, View of Lake and large slider to deck.
 - Mountain Theme
- ◆ Full Bath with access from Bedroom with Shower



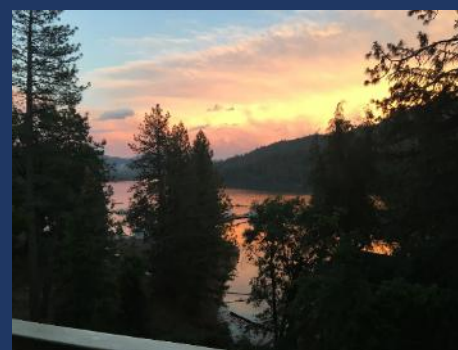
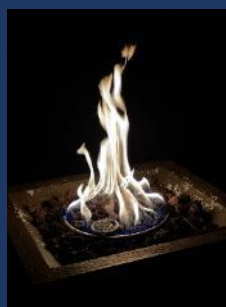
- ◆ Bedroom #2
 - Queen bed, nightstand, closet, desk, chair
 - Tropical Theme



- ◆ Bedroom #3 on main floor
 - Queen and Log-built bunk beds
- ◆ Bathroom #2
 - Full bath on main floor with access by all with Tub/Shower combo



Shasta LAKESHORE RETREAT



- ◆ 70' Wrap around Fully Covered Deck
 - Great Views of the Lake & Mountains
 - Two patio tables for total of eight
 - Seasonal stream below



Shasta LAKESHORE RETREAT

Reservations Available on All Three Platforms



- Click on Any Logo -

Shasta Area Information



Shasta Lakeshore Retreat Website



Availability Calendar



Reservations



Shasta 7 Awesome Lake Homes

"The Best at Shasta Lake"

LAKESHORE RETREAT
www.shastalakeshoreretreat.com

600+ FIVE STAR REVIEWS



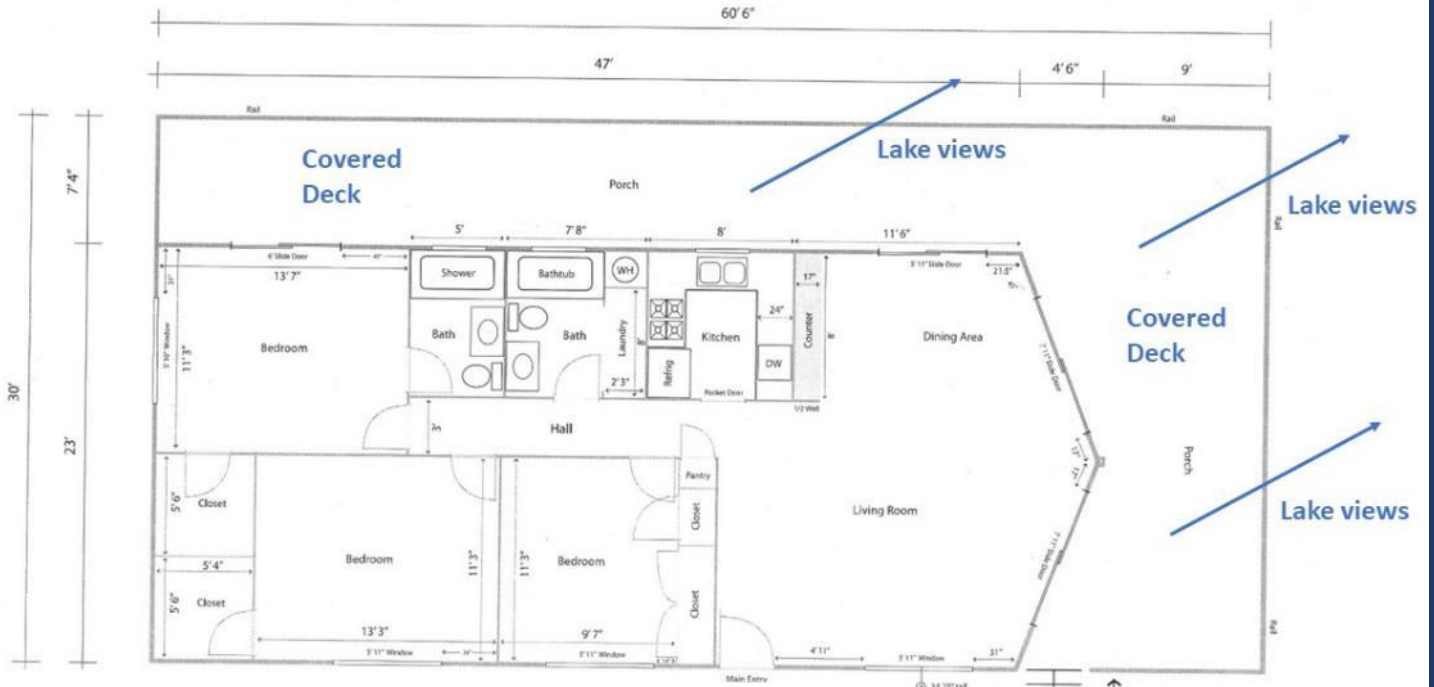
Retreat	Type	Square Feet	Sleeps	Bedrooms/Baths
#1	Lakefront	~1500	10	3/2
#2	Lakefront	~2000	14	4/2
#3	Lakefront	~2200	14	5/2
#4	Lakefront	~1850	12	4/3
#5	Lakeview	~1300	10	3/2
#9	Lakeview	~1300	8	3/2
#10	Lakefront	~2200	14	4/3+



Shasta LAKESHORE RETREAT
www.shastalakeshoreretreat.com

All 7 Homes on the most popular small street in Sugarloaf area of Lakehead
Retreat 6 & 7: Only a 5 Min Walk

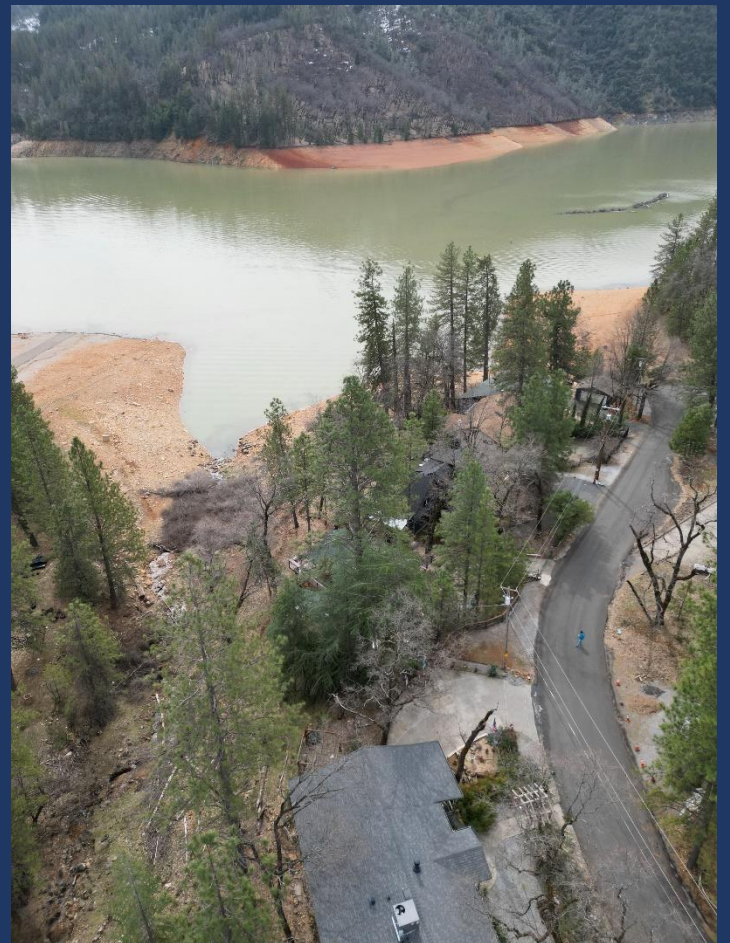




**Retreat #5
Floor Plan**

Note: Kitchen Area Remodeled with open design and Island







LAKE SHORE RETREAT

Item #	Feature	Retreat #5
1	~ Sq. Footage & # of Levels	~1300, 1 Floor, Lakeview
2	MAX. Sleep Number	10 (max # of adults =9)
3	# Bedrooms + Lofts	3
4	Reservations/Stays	Now/Now
5	Bedroom 1 (Master)	King, Mountain Theme, Ceiling Fan ,Large closet, BR Door, HDTV, 2 Nightstands with Lamps, Chairs, Slider to Deck
6	Bedroom 2	Queen, Tropical theme, Closet, Nightstands with Lamp, Desk, Chair
7	Bedroom 3	Queen, Plus 2 bunk beds for up to 4, dresser, large closet
11	Family Area (off Kitchen)	65" HDTV, Sofas, Chairs, Coffee Table, Wood Burning Stove, LV, Sliders to Deck
12	Extra Bedding	2 Roll-away Twins Bunk Beds
13	# of Full Bathrooms	2
14	Bathroom 1	Shower, Toilet, Sink, Door to Master
15	Bathroom 2	Shower/Tub, Toilet, Sink, Common Access, Washer/Dryer
18	Kitchen	Modern Kitchen, Refrig/Freezers w/Ice Maker, Stove, Microwave, Dishwasher, Bar Island, LV
19	Refrigerator/Freezers	2 Large
20	Fireplace or Stove	Indoor Wood Stove9
21	Cooling	Central Air, Ceiling Fans, Fans
22	Heating	Central Heat
23	Inside Dining	6 at Table, 4 at counter
24	Outside Dining	6 at table #1, 2 at 1 table #2
25	Washer & Dryer	Yes
26	Fast Wi-Fi	Yes (20Mdown 3Mup)
27	TV	2 Smart HDTVs, Streaming
28	Indoor Games	Board, Card, Dice, Etc.
29	Outdoor Games	Corn Hole
30	Smoking or Vaping?	NO!
31	Car/Truck Parking (without boat)5	3 on driveway, 1 in front on street, 1 on gravel near water tank
32	Boat or ATV Parking (NO Motorhomes/Sleeping Trailers)	On flat driveway. Good Boat/ATV parking
35	Gas BBQ (Propane Provided)	Yes
36	Heat Lamp (Propane Provided)	Yes, 2
37	Outside Ice Chest (Summer)	Yes
38	Gas Fire Pit (Propane Provided)	Yes
39	Floating Island (Summer)	Shared with Retreat 1, 2, 3, 4, 5, 8, 9, 10 & 17.
42	Trail/Path to Marina	Yes
43	Lake Access/Trail	Yes
44	Boat Anchoring off shore	Yes
45	Buoy(s) for boats off shore	Yes7
46	Boat Slip at Marina	Sugarloaf Marina is Seasonal, normally open from May 1 to Sept 30. Next door to R1-5, 8-10, 17. Close walk from R6, R7, R12, R15, R18, R19, R20 Slips are \$55/night (2025). Antlers is open earlier and long and have better slips (more protected) and might be less in price. R11, and R16 should use Antlers.
47	House Location	Lakeview, 1th Home on left on Daisy Ln, Sugarloaf Area of Lakehead. Next to R1. Same Street at R1, 2, 3, 4, 8, 9, 10, 17. 5-10 min walk to R6, 7, 12, 15, 18, 19, & 20.
48	Distance to Lake (When Full)	150 feet11
50	Shaded Deck	Yes, LV
52	Pets Allowed4	Yes, Approved only Well Trained Dogs4, \$95 Fee each
53	Reservation Sites14	Our Website (75%), VRBO (10%), Airbnb (15%). Lower cost/fees on our website at https://shastalakeshoreretreat.com/reservations/
54	Minimum Nights	2-7 Nights depending on time of year
57	Other (things not mentioned)	Seasonal Stream. Completely covered deck on 2 sides. Trails to Marina and Lake.
58	Stairs/Steps20	Main Floor - 2 steps from parking. Entire home on this level.
59	2026 Pricing12	~\$250-676 a Night12
60	Fire Safety	Fire Extinguishers on each floor, CO2 Detectors on Each Floor, Smoke Detectors in Bedrooms and Hallways
61	Other	Linens, Bedding, Pillows, Towels, Laundry Soap, Dish Soap, Ice Maker, Coffee Maker (Drip and Single Cup Keurig), Coffee filters, Toaster, Pots/Pans, Plates, Bowls, Glasses, Wine Glasses, Utensils, Board Games, Card Games, Dice, Corn Hole (most), Horse Shoes (some), Salt, Pepper, Some seasonings, Paper Towels*, Toilet Paper*, Air Freshener and Propane*. *Limited Qty, see guidebook for details.

1. BR=Bedroom, 2. LV=Lakeview 3. Stairs=Must take stairs to access. 4. Dogs must be well trained, no medical issues, not left alone in house unless in crate and never on furniture or beds. \$95 fee per pet. 5. If you have a boat/trailer/RV it you will be able to have 2-3 less cars. 7. Warm months as long as not prevented. 8. Sugarloaf Marina offers seasonal daily boat slips to public on first come basis (check if open). 9. Wood or Pellets provided. NO Outdoor fires on property. 10. Can be used throughout the house and on the decks. 11. From back of house to water level when lake is full. Can be several hundred yards if lake is low. Trail provided to water's edge. 12. Plus 10% lodging tax, cleaning fee \$225-\$495, Additional Guests Fees and any VRBO/Airbnb fees if not direct. Lowest price mid week in winter. Highest price weekends in the Summer and holidays. 14. Although there is a electrical hook up you can use if you discuss with us, you can not use to sleep in to increase the max number of guests. 15. No RV Trailers or Motorhomes. 16. Distance to water and view will vary depending on lake level. 17. Planned but ETA not known yet. Inquire. 18. View depends on lake level. 19. Always remember to bring properly fitted life vests with you for children until 12. Difficult to find right size at marina. 20. Please call to discuss concerns about elderly and handicapped access. 21. Use of Kayaks, Paddle Boards, the Floating Island, the Lake, Bikes, BBQ, Fireplace, Firepit, Heat Lamps, Hot Tubs and all other activities are at your own risk. Call us with questions. (Updated 1-20-2026)