



# TOUR OF RETREAT #8

Lake View Home Close to Marina  
Shasta Lake, California

Updated: December 22, 2024

Part 2

Please also see Part 1, the Overview Document that goes with this at:

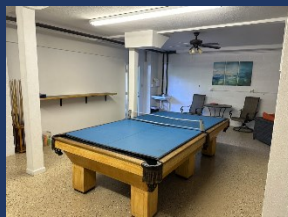
<https://shastalakeshoreretreat.com/Shasta-Lakeshore-Retreat-Info>



# LAKESHORE RETREAT

## RETREAT #8 (~2200 Square Feet)

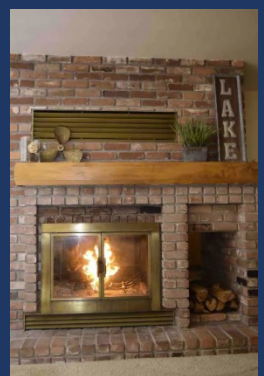
- ◆ Lake View, Sleeps up to 16 (9 adults max)
- ◆ 3 Large Bedrooms, 2 Full Bath, Wood Fireplace
- ◆ Game Room with Pool Table, Ping Pong, Basketball, TV
- ◆ Kayak & Paddle Board
- ◆ Large Deck with BBQ, Gas Fire Pit, Nice Outdoor Furniture, Patio Table
- ◆ Newly Remodeled Bathrooms







## LAKESHORE RETREAT



- ◆ Mid Floor (main floor)
  - Kitchen/Main Room/Family Room
    - Kitchen, large dining table that seats 8, sofa, love seat, chair, fireplace, 55" HD TV, big window views, wood ceilings/beams, ceiling fan, upper lakeview deck.





## LAKESHORE RETREAT



- Bedroom #1
  - Queen bed, Bunk Bed, large closet, nightstands, chair
  - Mid Floor



- Bathroom #1
  - Shower/Tub
  - New, Mid Floor



- Bedroom #2
  - 2 Queen Beds
  - Bunk Bed
  - Very large Room
  - Sitting Area
  - Upper Floor



- Bathroom #2
  - Full Bath with Shower
  - New, Upper Floor







## LAKESHORE RETREAT

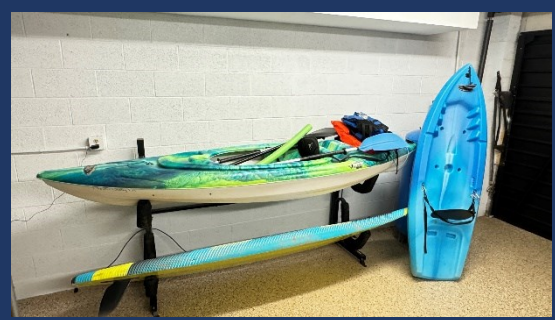
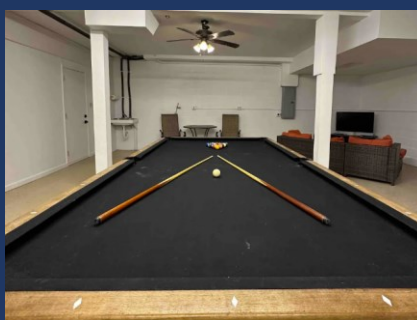
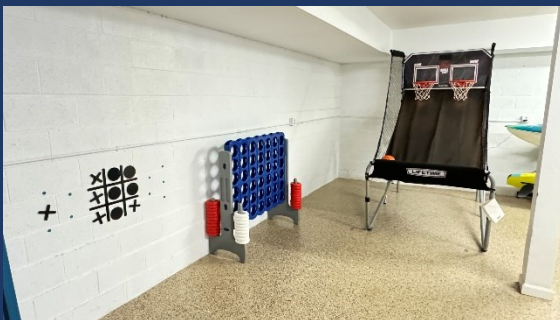
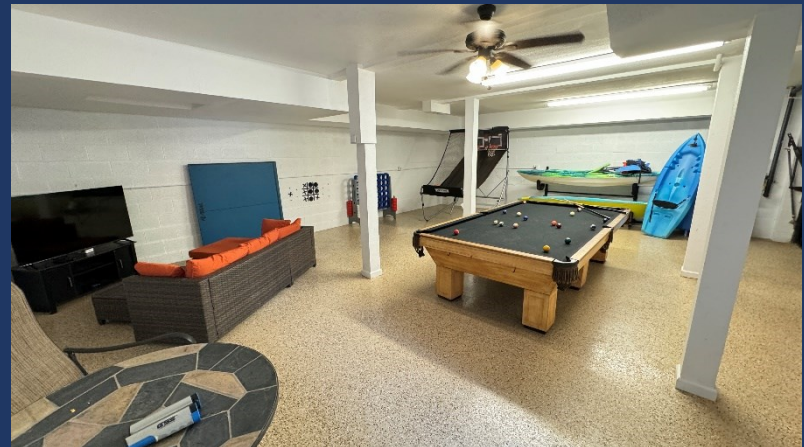
- Bedroom #3

- Two Queen Beds
- Bunk Bed
- Work Desk & Chair
- Very Large Room
- Upper Floor



- Game Room

- Pool Table
- Ping Pong
- Basketball
- Couch and TV
- Large Connect

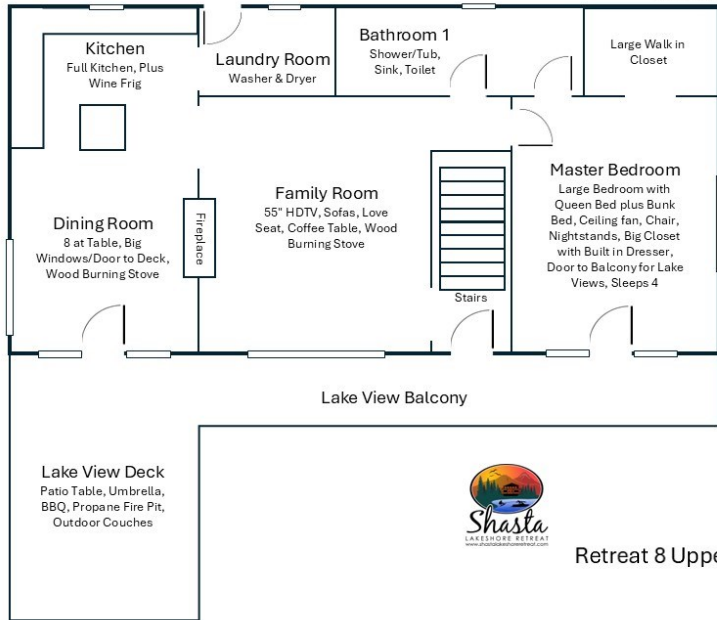




# LAKESHORE RETREAT

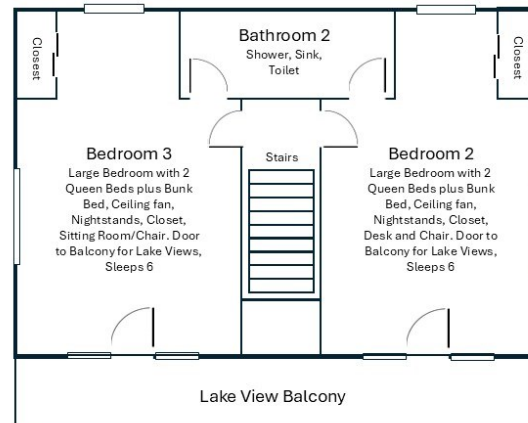
## Retreat 8 Main Mid Floor

Not to Scale,  
Approximate Drawing



## Retreat 8 Upper Floor

Not to Scale,  
Approximate Drawing



## Retreat 8 Lower Level (Driveway Level)







## LAKESHORE RETREAT

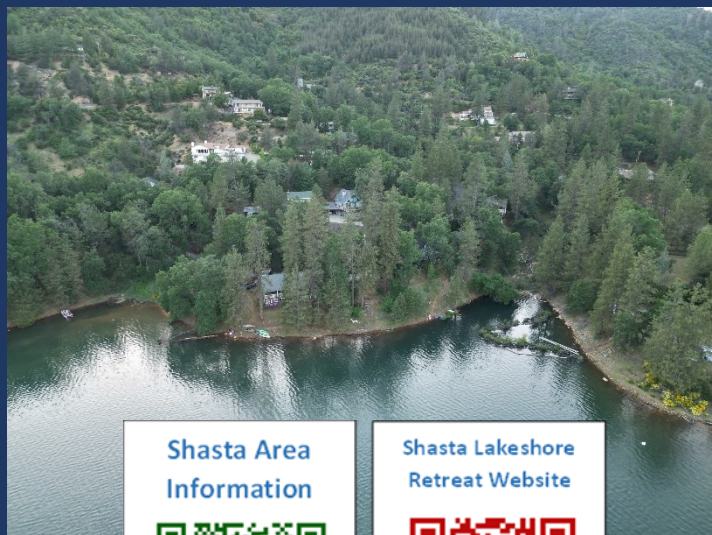


- Main Deck
  - Beautiful Lake View Deck
  - Seating, BBQ, Fire Pit, Patio Table





# Shasta LAKESHORE RETREAT



## Shasta Area Information



## Shasta Lakeshore Retreat Website



## Availability Calendar



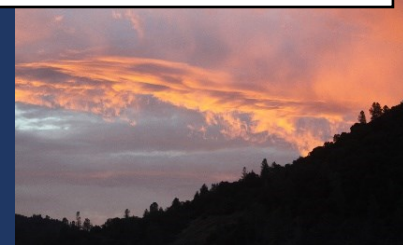
## Reservations



## Reservations Available on All Three Platforms



- Click on Any Logo -







# LAKESHORE RETREAT

#	Item	Retreat #8 <sup>21</sup>
1	~ Sq. Footage & # of Levels	~2200, 3 Floors, Lakeview
2	MAX. Sleep Number	16 (max # of adults =9)
3	# Bedrooms/Lofts	3
4	Reservations/Stays	Now/Now
5	Bedroom 1 (Master)	Queen, Middle/Main Floor, Bunk Bed, Ceiling fan, Chair, Nightstand, Big Closet with Built in Dresser, Sleeps 4
6	Bedroom 2	2 Queen, Upper Floor, Bunk Bed, Ceiling fan, Nightstands, Desk and Chair. Sleeps 6
7	Bedroom 3	2 Queen, Upper Floor, Bunk Bed, Ceiling fan, Nightstands, Chair and Sitting Area, Sleeps 6
10	Extra Room	Game Room converted from Garage. Pool Table, Ping Pong, Couch, TV, Chairs, Basketball Game, Large Connect, Bar seating area
11	Family Area (off Kitchen)	55" HDTV, Sofas, Love Seat, Coffee Table, Wood Burning Stove, Mid Level
13	# of Full Bathrooms	2
14	Bathroom 1	Main Floor, Shower/Tub, Sink, Toilet. Door to Hallway and Master Bedroom
15	Bathroom 2	Upper Floor, Shower, Sink, Toilet. Door to bedroom #2 & #3
18	Kitchen	Refrig/Freezers w/Ice Maker, Stove, Double Oven, Microwave, Dishwasher, Island, Wine fridge, Dining Table for 8
19	Refrigerator/Freezers	1 Large
20	Fireplace or Stove	Indoor Fireplace, Main Floor
21	Cooling	Central Air, Ceiling Fans, Fans
22	Heating	Central Heat
23	Inside Dining	8 at Table
24	Outside Dining	6 at Table, 6+ at Couch/Coffee Table
25	Washer & Dryer	Yes
26	Fast Wi-Fi	Yes (20Mdown 3Mup)
27	TV	2 Smart HDTVs with Roku
28	Indoor Games	Board, Card, Dice, Etc.
30	Smoking or Vaping?	NO!
31	Car/Truck Parking (if no boat)	5 Up to 3 cars, trucks.
32	Boat or ATV Trailer Parking	15 Call to discuss. Can put boat trailer at bottom of hill in the shared spot
35	Gas BBQ (Propane Provided)	Yes
38	Gas Fire Pit (Propane Provided)	Yes
43	Lake Access/Trail	Yes
46	Boat Slip at Marina	Sugarloaf Marina is Seasonal, normally open from May 1 to Sept 30. Next door to R1-5, 8-10, 17. Close walk from R6, R7, R12, R15, R18, R19 Slips are \$55/night (2024). Antlers is open earlier and long and have better slips (more protected) and might be less in price. R11, and R16 should use Antlers.
47	House Location	Lakeview 18, Best Street in Shasta on Daisy Lane in Sugarloaf area next to Sugarloaf Marina 8 & Boat Ramp. Same street as R1-5, R8-10, 17. 5-10 min walk to R6, 7, 12, 15, & 19.
48	Distance to Lake (When Full)	200 feet 11
50	Shaded Deck	Yes, via umbrellas
51	Unshaded Deck	Yes
52	Pets Allowed	4 Yes, Approved only Well Trained Dogs 4, \$95 (plus tax)
53	Reservation Sites	14 Our Website (70%), VRBO (15%), Airbnb (15%). Lower cost/fees on our website at <a href="https://shastalakeshoreretreat.com/reservations/">https://shastalakeshoreretreat.com/reservations/</a>
54	Minimum Nights	2-7 Nights depending on time of year
57	Other (things not mentioned)	Bedrooms are very large. Nice deck, views of lake and on Daisy Lane. Car Port. Desk in Bedroom.
58	Stairs/Steps	20 Main Floor - Requires 1 flight of stairs. Game room at Driveway Level.
60	Fire Safety	Fire Extinguishers on each floor, CO2 Detectors on Each Floor, Smoke Detectors in Bedrooms and Hallways
61	Other	Linens, Bedding, Pillows, Towels, Laundry Soap, Dish Soap, Ice Maker, Coffee Maker (R4, R8, R14 has Keurig, bring your favorite cups), Coffee filters, Toaster, Pots/Pans, Plates, Bowls, Glasses, Wine Glasses, Utensils, Board Games, Card Games, Dice, Corn Hole, Horse Shoes, Salt, Pepper, Some seasonings, Paper Towels*, Toilet Paper*, Air Freshener and Propane*. *Limited Qty, see welcome book for details.

1. BR=Bedroom, 2. LV=Lakeview 3. Stairs=Must take stairs to access. 4. Dogs must be well trained, no medical issues, not left alone in house unless in crate and never on furniture or beds. \$95 fee per pet. 5. If you have a boat/trailer/RV it you will be able to have 2-3 less cars. 7. Warm months as long as not prevented. 8. Sugarloaf Marina offers seasonal daily boat slips to public on first come basis (check if open). 9. Wood or Pellets provided. NO Outdoor fires on property. 10. Can be used throughout the house and on the decks. 11. From back of house to water level when lake is full. Can be several hundred yards if lake is low. Trail provided to water's edge. 12. Plus 10% lodging tax, cleaning fee \$225-\$495, Additional Guests Fees and any VRBO/Airbnb fees if not direct. Lowest price mid week in winter. Highest price weekends in the Summer and holidays. 14. Although there is a electrical hook up you can use if you discuss with us, you can not use to sleep in to increase the max number of guests. 15. No RV Trailers or Motorhomes. 16. Distance to water and view will vary depending on lake level. 17. Planned but ETA not known yet. Inquire. 18. View depends on lake level. 19. Always remember to bring properly fitted life vests with you for children until 12. Difficult to find right size at marina. 20. Please call to discuss concerns about elderly and handicapped access. 21. New to our collection of homes, replacing a previous Retreat 8. 22 New to our collection of homes, replacing a previous Retreat 17. Call us with questions. (Updated 10-20-2024)

