



# TOUR OF RETREAT #9

Lakeview Vacation Rental  
Shasta Lake, California

Updated: May 9, 2026, Part 2

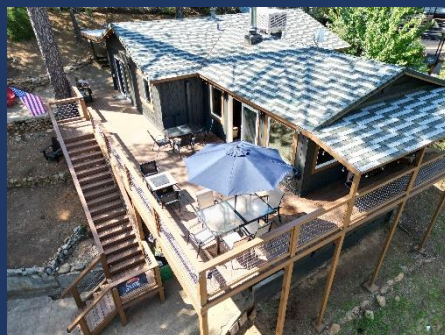
Please also see Part 1, the Overview Brochure that goes with this at:  
<https://shastalakeshoreretreat.com/Shasta-Lakeshore-Retreat-Info>



# LAKESHORE RETREAT



- ◆ ~1200 square feet
- ◆ All new furniture, appliances, flooring, paint, and much more.
- ◆ LAKEVIEW, next to Retreat #8 & across from Retreat 3
- ◆ All nature wood walls and ceilings.
- ◆ Home is perch high with maximum lake views.
- ◆ At end of cul-de-sac on double wide lot
- ◆ Sleeps up to 8 (2 Queens, Two Bunk Beds that include 3 twins and 1 full)
- ◆ 3 Bedrooms, 2 Full Baths, Kitchen/Main Family Room great Lake Views!
- ◆ Covered wrap around deck with a BBQ, Gas Fire Pit, and Heat Lamp
- ◆ Indoor Wood Burning Stove (wood supplied)
- ◆ Two Kayaks and Two Paddle Boards, Hammock, Horseshoes, Darts
- ◆ Four mini splits for superb cooling and heating. Ceiling fans in every room.
- ◆ Good level parking.
- ◆ Trail to water across the street
- ◆ Note: This house requires the climb of 1.5 floors of stairs so anyone who has physical challenges should consider one of our other retreats.





# LAKESHORE RETREAT

## ◆ Main Room/Kitchen

- Beautiful front room with lots of large windows and slider with views of the lake from two sides. Great seating via sectional sofa and multiple chairs. 65" Smart TV with DirecTV, wood ceilings and beams. Dining table for six and room for two at the kitchen bar/counter.
- Wood burning stove. Wood provided in off season.
- Full modern kitchen including brand new electric stove/oven range, dishwasher, refrigerator, and microwave. Pantry for your supplies.





# LAKESHORE RETREAT

## ◆ Master Bedroom #1

- Queen bed, nightstands, dresser, chair, Smart 50" TV.
- Door to bathroom.
- Lakeview from Slider to Deck
- Wood ceilings, wood floor, ceiling fan, dedicated mini-split for AC and heat.
- Shasta area prints



## ◆ Full Bath with access from Master Bedroom and hallway.

- Tub/Shower combo, Sink, Toilet

## ◆ Guest Bedroom #2

- Queen bed, nightstands, closet
- Accent chair
- Window to deck and lakeview
- Dedicated mini-split for Air & Heat





## LAKESHORE RETREAT

### ◆ Bedroom #3 (Bunk Room)

- Two bunk beds providing three twin beds and one full.
- Closet (shelves to be added for clothing) & accent chair.
- Dedicated Mini-Split for Air & Heat



### ◆ Bathroom #2

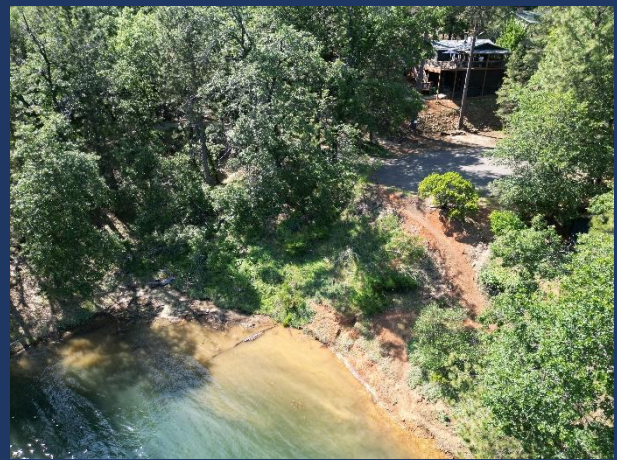
- 2<sup>nd</sup> full bath with new walk-in shower, sink, toilet. Door to Bedroom #2 and to hallway.





# LAKESHORE RETREAT

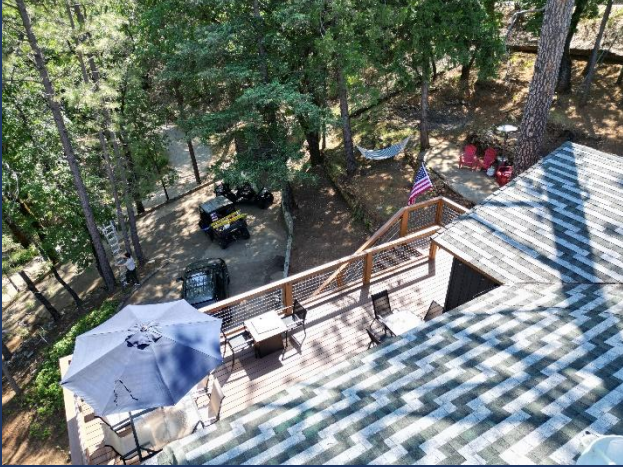
- ◆ 50' Wrap around Deck partially covered.
  - Great Views of the Lake & Mountains
  - Two patio tables and seating for 10
  - Gas Fire Pit, Heat Lamp, and Gas BBQ
  - Two additional chairs and small table in front covered.



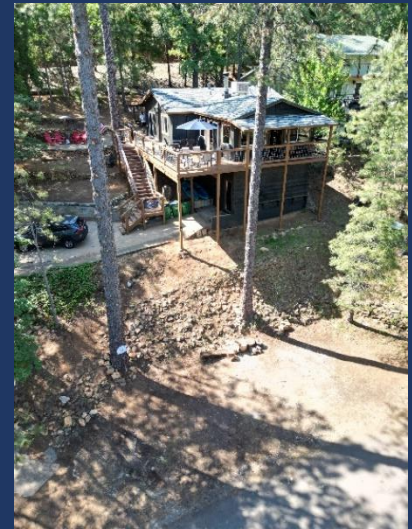
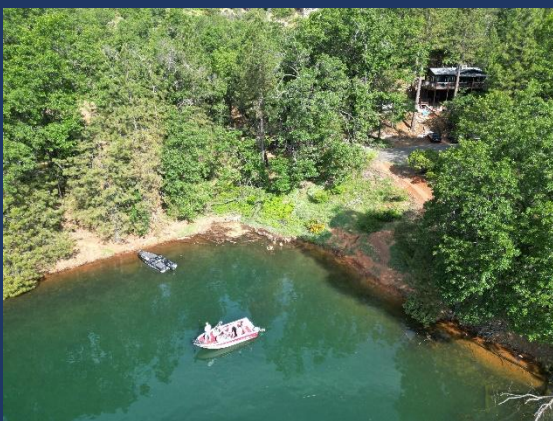


# LAKESHORE RETREAT

- ◆ Large double size Lot
  - Horseshoes, additional seating
  - Lots of parking, Hammock
  - Short walk to water



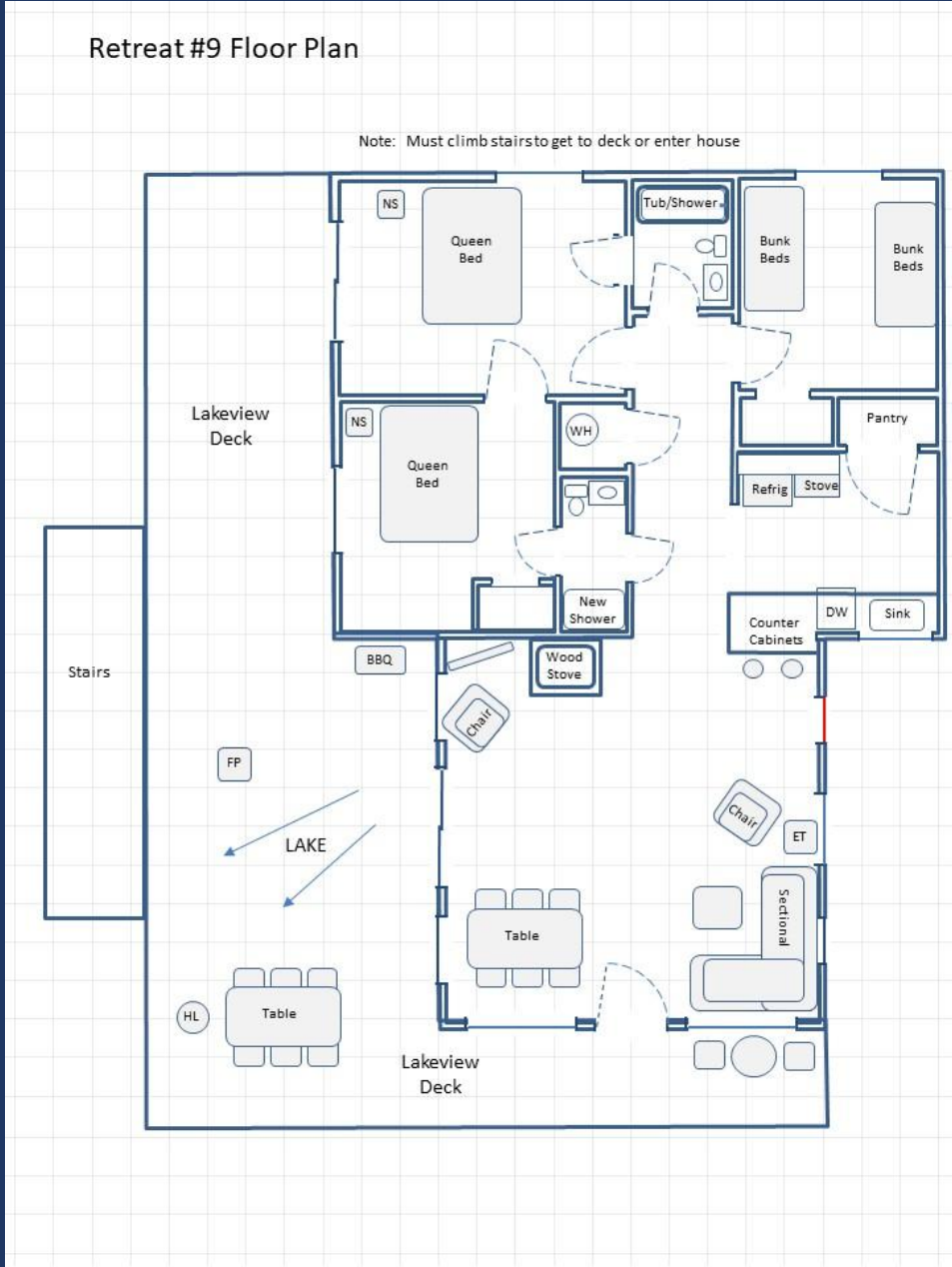
- ◆ Other
  - Two Kayaks and Paddle Boards for your use (at your own risk)
  - Dart Game, Corn Hole Game, Horseshoes
  - Board Games, Dice, Portable Speaker
- ◆ Mini Split (for Air Conditioning and Heat)
  - One located in each bedroom and in main area.
- ◆ Washer Dryer
- ◆ Trail
  - There is a trail to the water at the end of the cul-de-sac.
- ◆ Parking
  - Driveway, & Boat & Additional Car Parking





Retreat #9 Floor Plan

Note: Must climb stairs to get to deck or enter house



5-

Note: Furniture might be a little different than drawing above.





# SHASTA LAKESHORE RETREAT



**Reservations Available on All Three Platforms**





- Click on Any Logo -



# SHASTA LAKESHORE RETREAT

Item	Features	Retreat #9
1	~ Sq. Footage & # of Levels	~1300, 1 Floor, Lakeview
2	MAX. Sleep Number	8 (max # of adults =8)
3	# Bedrooms/Lofts	3
4	Reservations/Stays	Now/Now
5	Bedroom 1 (Master)	Queen, Smart TV, Nightstands with lamps, Ceiling Fan, Slider to deck/lake view, Door to Common Bathroom, Lakeview.
6	Bedroom 2	Queen, Nightstands, Lamp, Closet, Ceiling fan, Window to deck & Lake, Door to Common Bathroom & Master.
7	Bedroom 3	Two bunk Beds. Three Twins, One Full. Ceiling Fan, Closet, Chair.
11	Family Area (off Kitchen)	65" Smart TV, Sofas, Chairs, Coffee Table, Wood Burning Stove, Lake views
13	# of Full Bathrooms	2
14	Bathroom 1	Shower/Tub, Sink, Toilet. Door to Master and Hallway
15	Bathroom 2	Shower, Sink, Toilet. Door to Bedroom 2 and Hallway
18	Kitchen	NEW Refrig/Freezers w/Ice Maker, Elec Stove, Microwave, Dishwasher. Lakeview.
19	Refrigerator/Freezers	1 Large
20	Fireplace or Stove	Indoor Wood Stove9
21	Cooling	Four Mini-Splits for great Air, Ceiling Fans, Fans
22	Heating	Four Mini-Splits for great heat plus stove.
23	Inside Dining	6 at table, 2 at bar counter
24	Outside Dining	8+ at Tables
25	Washer & Dryer	Yes
26	Fast Wi-Fi	Yes (20Mdown 3Mup)
27	TV	2 Smart TVs, DirecTV in Fam Room
28	Indoor Games	Board, Card, Dice, Etc.
29	Outdoor Games	Corn Hole, Darts, Horse Shoes
30	Smoking or Vaping?	NO!
31	Car/Truck Parking (if no boat)5	Up to 5 cars, trucks and Boats. Multiple Boats OK.
32	Boat or ATV Trailer Parking15	Flat gravel area by road.
35	Gas BBQ (Propane Provided)	Yes
36	Heat Lamp (Propane Provided)	Yes
37	Outside Ice Chest (Summer)	Yes
38	Gas Fire Pit (Propane Provided)	Yes
39	Floating Island (Summer)	Yes
40	Kayaks	Yes, 2
42	Trail/Path to Marina	Yes
43	Lake Access/Trail	Yes
44	Boat Anchoring off shore	Yes
46	Boat Slip at Marina	Sugarloaf Marina is Seasonal, normally open from May 1 to Sept 30. Next door to R1-5, 8-10, 17. Close walk from R6, R7, R12, R15, R18, R19, R20 Slips are \$55/night (2025). Antlers is open earlier and long and have better slips (more protected) and might be less in price. R11, and R16 should use Antlers.
47	House Location	Lakeview18, Best Street in Shasta on Daisy Lane in Sugarloaf area next to Sugarloaf Marina8 & Boat Ramp. Same street as R1-5, R8-10, R17. 5-10 min walk to R6, 7, 12, 15, & 19.
48	Distance to Lake (When Full)	150 feet11
49	Hammocks (Summer)	1
50	Shaded Deck	Yes, via umbrellas
51	Unshaded Deck	Yes, LV
52	Pets Allowed4	Yes, Approved only Well Trained Dogs4, \$95 (plus tax)
53	Reservation Sites14	Our Website (75%), VRBO (10%), Airbnb (15%). Lower cost/fees on our website at <a href="https://shastalakeshoreretreat.com/reservations/">https://shastalakeshoreretreat.com/reservations/</a>
54	Minimum Nights	2-7 Nights depending on time of year
57	Other (things not mentioned)	Large double lot. Next to R1-5 R8-10,17. Views of Lake. All wood inside. New Flooring, Furniture & Paint. Must climb full flight of stairs to get to house.
58	Stairs/Steps20	1.5 Flights of Stairs to get to single level
59	2026 Pricing12	~\$278-\$749+ a Night12
60	Fire Safety	Fire Extinguishers on each floor, CO2 Detectors on Each Floor, Smoke Detectors in Bedrooms and Hallways
61	Other	Linens, Bedding, Pillows, Towels, Laundry Soap, Dish Soap, Ice Maker, Coffee Maker (Drip and Single Cup Keurig), Coffee filters, Toaster, Pots/Pans, Plates, Bowls, Glasses, Wine Glasses, Utensils, Board Games, Card Games, Dice, Corn Hole (most), Horse Shoes (some), Salt, Pepper, Some seasonings, Paper Towels*, Toilet Paper*, Air Freshener and Propane*. *Limited Qty, see guidebook for details.

1. BR=Bedroom, 2. LV=Lakeview 3. Stairs=Must take stairs to access. 4. Dogs must be well trained, no medical issues, not left alone in house unless in crate and never on furniture or beds. \$95 fee per pet. 5. If you have a boat/trailer/RV it you will be able to have 2-3 less cars. 7. Warm months as long as not prevented. 8. Sugarloaf Marina offers seasonal daily boat slips to public on first come basis (check if open). 9. Wood or Pellets provided. NO Outdoor fires on property. 10. Can be used throughout the house and on the decks. 11. From back of house to water level when lake is full. Can be several hundred yards if lake is low. Trail provided to water's edge. 12. Plus 10% lodging tax, cleaning fee \$225-\$495, Additional Guests Fees and any VRBO/Airbnb fees if not direct. Lowest price mid week in winter. Highest price weekends in the Summer and holidays. 14. Although there is an electrical hook up you can use if you discuss with us, you can not use to sleep in to increase the max number of guests. 15. No RV Trailers or Motorhomes. 16. Distance to water and view will vary depending on lake level. 17. Planned but ETA not known yet. Inquire. 18. View depends on lake level. 19. Always remember to bring properly fitted life vests with you for children until 12. Difficult to find right size at marina. 20. Please call to discuss concerns about elderly and handicapped access. 21. Use of Kayaks, Paddle Boards, the Floating Island, the Lake, Bikes, BBQ, Fireplace, Firepit, Heat Lamps, Hot Tubs and all other activities are at your own risk. Call us with questions. (Updated 1-20-2026)