



# TOUR OF RETREAT #20

Lakefront 3300 Sq. Ft., Luxury Throughout  
Lakehead (Shasta Lake), California

Updated: January 25, 2026

Please also see Part 1, the Overview Brochure that goes with this at:

<https://shastalakeshoreretreat.com/Shasta-Lakeshore-Retreat-Info>



## LAKESHORE RETREAT



- ◆ Large 3300 Square Foot Lakefront/Lake View Luxury Home
- ◆ 5 Sleeping Areas
  - 4 Large Bedrooms, 1 Loft
- ◆ Sleeps up to 12 (4 Queens, Twin, Sleeper Sofa), Max 9 Adults
- ◆ Modern Kitchen, Large Family Rooms, Large Dining Table for 8, High Ceilings
- ◆ Great flat parking for Cars, Trucks and Boats on Wide Driveway
- ◆ Short Walk to Sugarloaf Marina (Boat Slips for Rent, Boat Ramp, Store, Gas)
- ◆ Large Deck with Patio area under with Great Seating for 12+, Gas Fire Pit, Heat Lamp, and BBQ
- ◆ 5 TVs, DVD, X-Box Games
- ◆ Central Heating & Air Conditioning







## LAKESHORE RETREAT

### ◆ Main Family Room/Kitchen/Dining (Lower Main Level)

- Spacious, High Ceilings, Big Window Views of Lake
- Large High-End Kitchen with Island and Bar Counter
- Dining Table for eight, plus two at counter
- 65" TV, Wood Stove
- Fully Reclining Sofas and Chairs
- Excellent for Large Group Gatherings







## LAKESHORE RETREAT

### ◆ Master Bedroom #1 (Lower Level)

- Queen Bed, Nightstands, Lamps
- Ceiling Fan, TV
- French Doors to Deck
- Full Private Bath #1



### ◆ Bedroom #2 (Lower Level)

- Queen Bed, Nightstand, Lamp
- Ceiling Fan, TV
- Sitting & Storage Area
- Door to Common Bathroom







## LAKESHORE RETREAT

### ◆ Bedroom #3 (Upper Level)

- Large Suite with Queen Bed & Sleeper Sofa (Sleeps 4)
- Dresser, Nightstand, Lamp, Ceiling Fan
- Kitchenette with mini frig, microwave & Keurig Coffee Maker
- 65" Smart HDTV and DVD Player with available DVDs



### ◆ Bedroom #4 (Upper Level)

- Queen and Twin Bed (Sleeps 3)
- Nightstands, Lamps, Ceiling Fan
- 40" TV







## LAKESHORE RETREAT

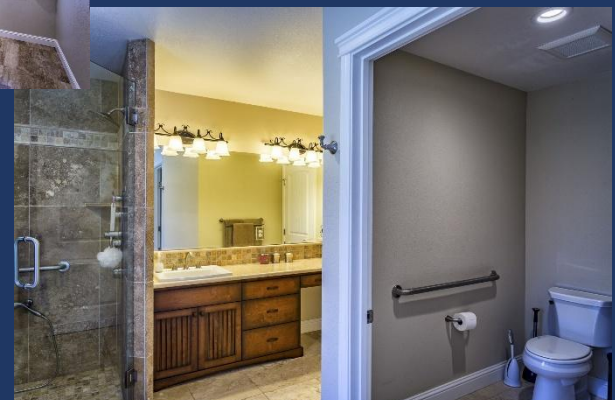
### ◆ Loft Area

- Section Couch & Two Chairs
- Great place for kids in Sleeping Bags
- Hundreds of Games



### ◆ Three Bathrooms

- Lower Level
  - Private bath for Master (Separate Tub with TV and Shower)
  - Common bath with Shower & Two Sinks
- Upper Level
  - Tub/Shower & Two Sinks







## LAKESHORE RETREAT

- ◆ Large Deck & Lower Covered Patio
  - Lake & Marina Views
  - BBQ, Propane Fire Pit, Heat Lamp
  - Seating for 12+
  - Kayaks & Paddle Boards
  - Easy Trail to Lake



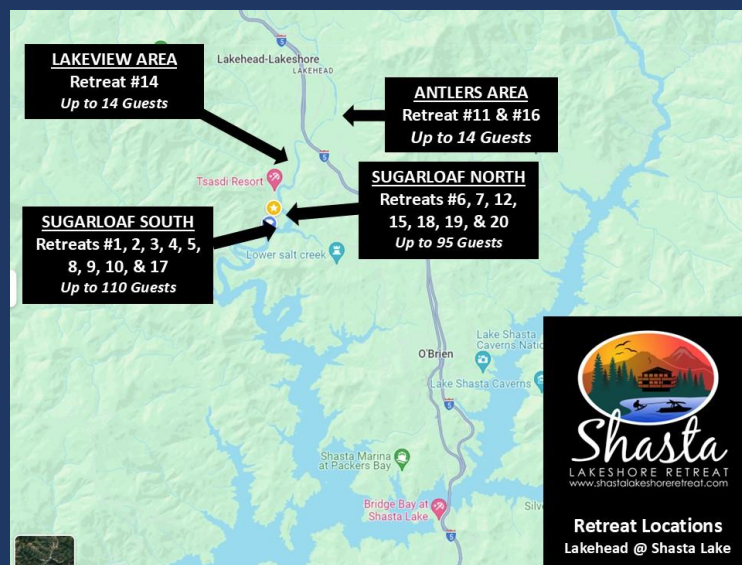
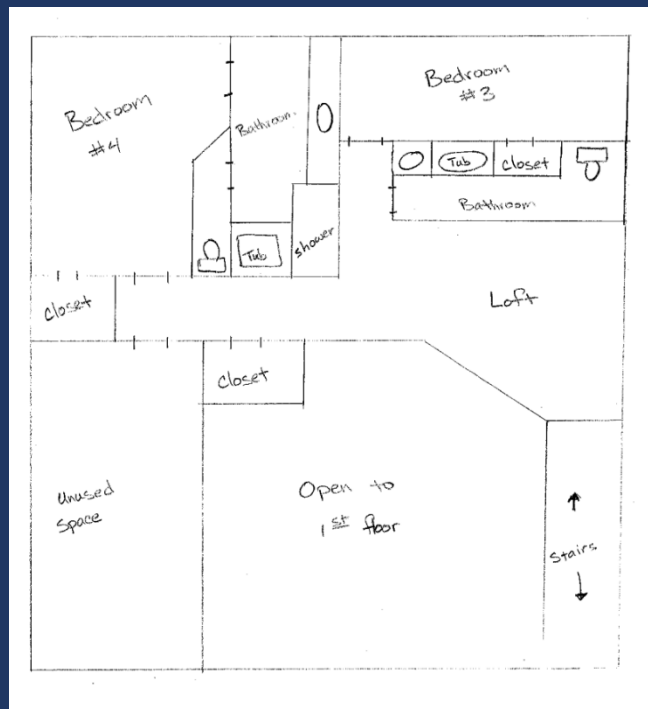
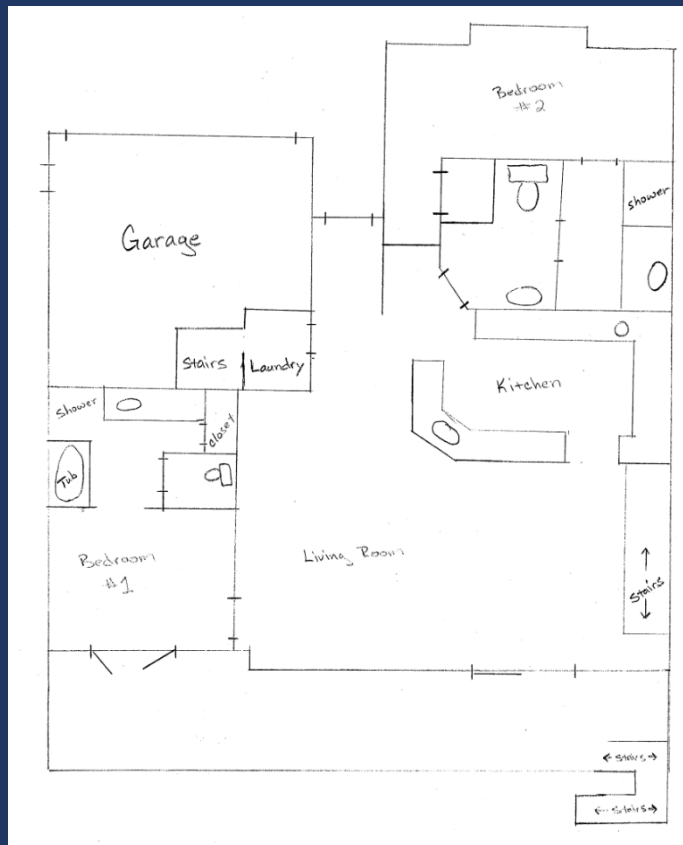




# LAKESHORE RETREAT

## ◆ Floor Plan for Home

Temporary hand drawn (to be replaced with professional drawings)







# Shasta LAKESHORE RETREAT



Reservations Available on All Three Platforms



- Click on Any Logo -

## Shasta Area Information



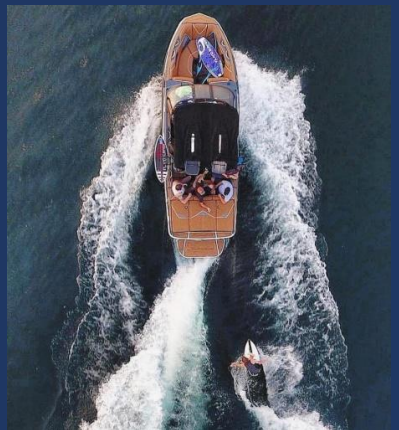
## Shasta Lakeshore Retreat Website



## Availability Calendar



## Reservations







# LAKE SHORE RETREAT

Retreat	Item	Retreat #20
1	~Sq. Footage & # of Levels	~3300, 2 Floors, Lakefront
2	MAX. Sleep Number	12(max # of Adults 9)
3	# Bedrooms/Lofts	4 Bedrooms + Loft
4	Reservations/Stays	Now/Feb 2026
5	Bedroom 1 (Master)	Queen, Main Lower Level, Nightstands, Lamps, 65" TV, Dresser, Lake View, Closet, Ceiling Fan, French Doors to Deck, Private Bath
6	Bedroom 2	Queen bed, Nightstand, Lamp, Ceiling Fan, Dresser, 40"TV, DVD Player, Sitting Area, Storage, Door to Common bathroom.
7	Bedroom 3	Queen Bed, Nightstands, Lamps, Dresser, Kitchette with microwave, dorm/bar fridge, keurig coffee maker, 65" Smart HDTV, DVD Player with DVDs, Sleeper Couch
8	Bedroom 4	Queen Bed, Nightstands, Lamps, Dresser, Twin Bed, 40" TV, Closet
13	Extra Room	Large Loft on 2nd level with lake views. Sectional couch and two chairs. Room for sleeping bags for kids. Ceiling Fan.
14	Family Area (off Kitchen)	Main Lower Level. Large area with sectional sofa and 65" Smart TV. DVD Player, Xbox Game
15	Extra Bedding	Under bed in room 3 and in the closet of room 4
16	# of Full Bathrooms	3
17	Bathroom 1	Main Lower Floor, Tub, Shower, Toilet, Sink off Master Bedroom
18	Bathroom 2	Main Lower Floor, Shower, 2 Sinks, Toilet, door to bedroom 2 & hallway
19	Bathroom 3	Upper Level, Tub/Shower, Toilet, Sink, Door to Hallway
22	Kitchen(s)	Modern, Large Kitchen with high end appliances, 6 Burner Stove, Dual Oven, Large Refrigerator/Freezer, Dishwasher, 2 sinks, Microwave, Island, Pantry, Lake View, Open to Family Room
23	Refrigerator/Freezers	1 Large in kitchen, 2 Freezer on Top, Frig on bottom smaller ones in laundry room, 1 Dorm in Bedroom
24	Fireplace or Stove	
25	Cooling	Central Air, Ceiling Fans
26	Heating	Central Heat
27	Inside Dining	8 at table, 2 at counter
28	Outside Dining	6 on Table on Deck, 12+ on patios table and picnic tables in yard (off deck)
29	Washer & Dryer	Yes
30	Fast Wi-Fi	Yes (Starlink)
31	TV	5 HDTVs (Mostly Smart)
32	Indoor Games	Many Board Games
33	Outdoor Games	Jenga
34	Smoking or Vaping?	NO!
35	Car/Truck Parking (without boat)5	Up to 5 cars, trucks & boats.
36	Boat or ATV Trailer Parking15	Almost Flat Driveway
37	Hot Tub	
38	Swimming Pool	
39	Gas BBQ (Propane Provided)	Yes, on main deck.
40	Heat Lamp (Propane Provided)	TBA (March 2026)
41	Outside Ice Chest (Summer)	
42	Gas Fire Pit (Propane Provided)	TBA (March 2026)
44	Kayaks	Yes (2)
45	Paddle Boards (Seasonal)	Yes (3)
46	Trail/Path to Marina	Sugarloaf Marina is Seasonal, normally open from May 1 to Sept 30. Next door to R1-5, 8-10, 17. Close walk from R6, R7, R12, R15, R18, R19, R20 Slips are \$55/night (2025). Antlers is open earlier and long and have better slips (more protected) and might be less in price. R11, and R16 should use Antlers.
47	Lake Access/Trail	Yes, Lakefront w/beach area when full
48	Boat Anchoring off shore	Yes, when lake is near top, otherwise no
50	Boat Slip at Marina	Sugarloaf Marina is Seasonal, normally open from May 1 to Sept 30. Next door to R1-5, 8-10, 17. Close walk from R6, R7, R12, R15, R18, R19, R20 Slips are \$55/night (2025). Antlers is open earlier and long and have better slips (more protected) and might be less in price. R11, and R16 should use Antlers.
51	House Location	Sugarloaf area of Lakehead, steps to water when full, 5 min walk to marina. Short walk to all other retreats excepts #11, #14, #16. Closest to Retreat 20, 6, & 15.
52	Distance to Lake (When Full)	200 Feet (Will Vary Greatly, Inquire)
53	Hammocks (Summer)	2 Hammock Chairs under Deck
54	Shaded Deck	Yes, covered under deck and umbrellas on deck.
55	Unshaded Deck	Yes with umbrellas.
56	Pets Allowed4	No, not at this time.
57	Reservation Sites14	Our Website (75%), VRBO (10%), Airbnb (15%). Lower cost/fees on our website at <a href="https://shastalakeshoreretreat.com/reservations/">https://shastalakeshoreretreat.com/reservations/</a>
58	Minimum Nights	2-7 Nights depending on time of year
59	Whole Home Auto Generator	
60	Kids Stuff?	High Chair, Play Pen
61	Other (things not mentioned)	Linens, Bedding, Pillows, Towels, Laundry Soap, Dish Soap, Ice Maker, Coffee Maker (Drip and Single Cup Keurig), Coffee filters, Toaster, Pots/Pans, Plates, Bowls, Glasses, Wine Glasses, Utensils, Board Games, Card Games, Dice, Corn Hole (most), Horse Shoes (some), Salt, Pepper, Some seasonings, Paper Towels*, Toilet Paper*, Air Freshener and Propane*. *Limited Qty, see guidebook for details.

1. BR=Bedroom, 2. LV=Lakeview 3. Stairs=Must take stairs to access. 4. Dogs must be well trained, no medical issues, not left alone in house unless in crate and never on furniture or beds. \$95 fee per pet. 5. If you have a boat/trailer/RV it you will be able to have 2-3 less cars. 7. Warm months as long as not prevented. 8. Sugarloaf Marina offers seasonal daily boat slips to public on first come basis (check if open). 9. Wood or Pellets provided. NO Outdoor fires on property. 10. Can be used throughout the house and on the decks. 11. From back of house to water level when lake is full. Can be several hundred yards if lake is low. Trail provided to water's edge. 12. Plus 10% lodging tax, cleaning fee \$225-\$495, Additional Guests Fees and any VRBO/Airbnb fees if not direct. Lowest price mid week in winter. Highest price weekends in the Summer and holidays. 14. Although there is a electrical hook up you can use if you discuss with us, you can not use to sleep in to increase the max number of guests. 15. No RV Trailers or Motorhomes. 16. Distance to water and view will vary depending on lake level. 17. Planned but ETA not known yet. Inquire. 18. View depends on lake level. 19. Always remember to bring properly fitted life vests with you for children until 12. Difficult to find right size at marina. 20. Please call to discuss concerns about elderly and handicapped access. 21. Use of Kayaks, Paddle Boards, the Floating Island, the Lake, Bikes, BBQ, Fireplace, Firepit, Heat Lamps, Hot Tubs and all other activities are at your own risk. Call us with questions. (Updated 1-25-2026)