



Shasta

LAKESHORE RETREAT
www.shastalakeshoreretreat.com



TOUR OF RETREAT #2

Lakefront Vacation Rental
Shasta Lake, California

Updated: April 22, 2026

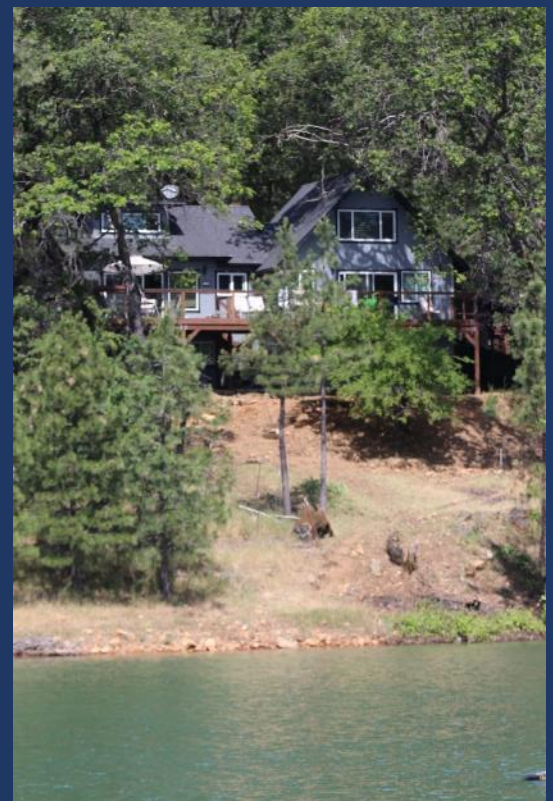
Part 2

Please also see Part 1, the Overview Document that goes with this at:
<https://shastalakeshoreretreat.com/Shasta-Lakeshore-Retreat-Info>



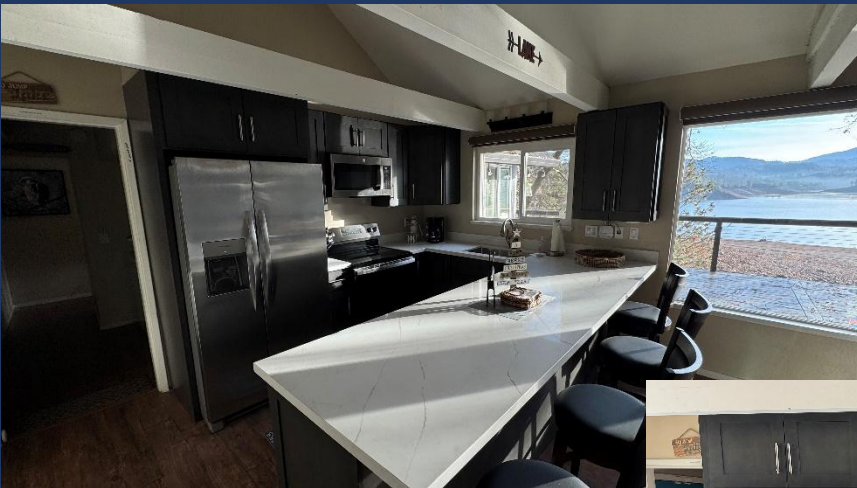
RETREAT #2 (~2000 Square Feet)

- ◆ Lakefront, Sleeps up to 14 (Max 9 Adults)
- ◆ 1 King, 3 Queens, 4 Doubles/Fulls, Twin Rollaway
- ◆ 3 Bedrooms plus loft, 2 Full Bathrooms, Modern Kitchen/Main Family Room with Big Window Views!
- ◆ Two large decks, BBQ, Hot Tub, Heat Lamp, Gas Fire Pit
- ◆ Indoor Wood Burning Fireplace (wood supplied)





LAKESHORE RETREAT



- ◆ Mid Floor (main floor, street level)
 - Kitchen/Main Room
 - Modern Kitchen, dining table, reclining sofa and larger chair, 55" Smart 4K, wood burning fireplace, big window views, wood ceilings/beams, ceiling fan, bar stools, local photos and access to main deck. Some additional improvements since these photos.



- Master Bedroom (Bedroom #1)

- The “Captain’s Suite” has a King bed, dresser, nightstands, 55” Smart TV, wood beam ceilings, ceiling fan, closet, sitting/reading area with a comfortable arm chair and ottoman, wood blinds, slider to main deck, large windows with view of lake plus local photos of the lake and a door to the bathroom.



- Bathroom #1

- Full bath with standup shower as well as twin sinks with door to master bedroom & common hallway.



- Bathroom #2

- Full bath with twin sinks, toilet and standup shower. The door goes to the hallway off the main family/kitchen area.





- Top Deck
 - 50+ foot wide deck with great views of lake, marina and mountains. Includes two patio tables, chairs, bar counter, heat lamp, gas fire pit and gas BBQ.



◆ Upper Floor (stairs up)

• Bedroom #2

- A narrow private staircase takes you to the “Houseboat Room” which is also very private like the master bedroom with a Queen bed, comfortable large armchair for reading, dresser, nightstand, ceiling fan, closets, big window view of the lake and photos of the local wildlife.



• Loft

- Also, up its own staircase takes you to the “Party Deck” with four full size beds, a dresser, nightstand, ceiling fan, 40” Smart TV, large closet, and photos of water sports on the lake. This room has a view of the lake and overlooks the Kitchen. Our guests find this room is best for kids or teenagers.



◆ Lower Floor (Exterior Stairs Down from Main Floor)

• Bedroom #3

- “Castaway Island” features its own private entrance facing the lake going out to the lower deck & hot tub. This room includes a Queen bed and a full bed, dresser, nightstand, closet, great views of lake, and 58” Smart TV. Access to this room is via the staircase on the deck.



◆ Lower Deck

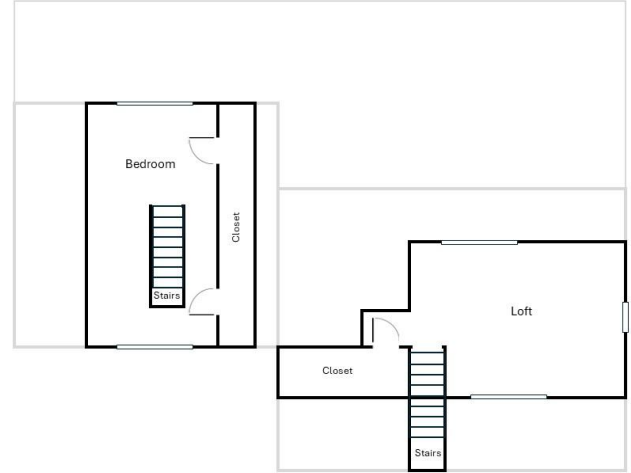
- The lower deck provides additional outside entertaining in the shade of the upper deck. Small patio table, a sitting area, and the hot tub with views of the lake are on this deck. Access to this deck is from the staircase from the upper deck. The blue door in the photo on the left leads into bedroom #3 known as “Castaway Island”. This deck also leads to the trail/path to the lake and marina.



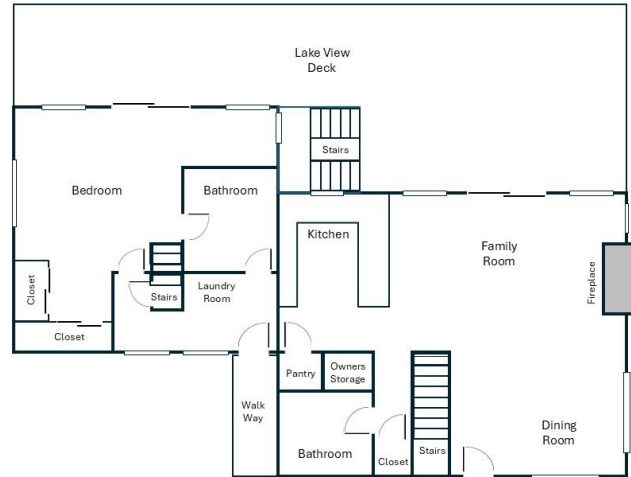
Shasta LAKESHORE RETREAT



Retreat 2: Upper Level



Retreat 2: Main Level



Shasta
LAKESHORE RETREAT
www.shastalakeshoreretreat.com

7 Awesome Lake Homes

"The Best at Shasta Lake"

600+ FIVE STAR REVIEWS



Retreat	Type	Square Feet	Sleeps	Bedrooms/Baths
#1	Lakefront	~1500	10	3/2
#2	Lakefront	~2000	14	4/2
#3	Lakefront	~2200	14	5/2
#4	Lakefront	~1850	12	4/3
#5	Lakeview	~1300	10	3/2
#9	Lakeview	~1300	8	3/2
#10	Lakefront	~2200	14	4/3+



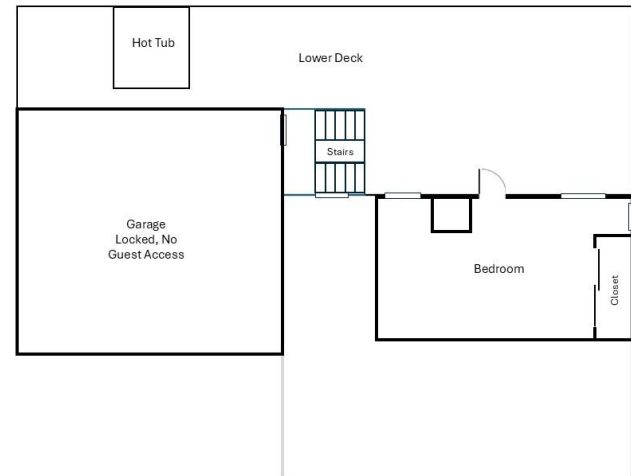
Shasta
LAKESHORE RETREAT

All 7 Homes on the most popular small street in Sugarloaf area of Lakehead

Retreat 6 & 7: Only a 5 Min Walk

Boat Ramp & Marina

Retreat 2: Lower Level





SHASTA LAKESHORE RETREAT



Shasta Area Information

Shasta Lakeshore Retreat Website

Availability Calendar

Reservations



Reservations Available on All Three Platforms

- Click on Any Logo -



Shasta LAKESHORE RETREAT

Item	Features	Retreat #2
1	~ Sq. Footage & # of Levels	~2000, 3 Floors, Lakefront
2	MAX. Sleep Number	14 (max # of adults 9)
3	# Bedrooms + Lofts	3 Bedrooms, plus Loft
4	Reservations/Stays	Now/Now
5	Bedroom 1 (Master)	King, Main Parking Level Floor, Dresser, 2 nightstands, Ceiling Fan, Arm Chair, Closet, BR Door, Smart TV, LV2, Slider to Deck
6	Bedroom 2	Two Queen Beds for up to 4, Stairs3, Smart TV, Closet, LV
7	Bedroom 3	Queen, Dresser, Nightstand, Arm Chair, Closet, Ceiling Fan, Stairs3, LV
8	Loft	Loft Area, 4 Fulls for up to 8, Dresser, Nightstand, Ceiling Fan, Closet, Stairs3, Smart TV, LV
11	Family Area (off Kitchen)	Reclining Couch, Arm Chair, Smart TV, DirecTV, Wood Fireplace, LV. Slider to deck. Main Parking Level Floor.
12	Extra Bedding	Roll-Away Twin10, Air Mattress
13	# of Full Bathrooms	2
14	Bathroom 1	Main Floor, Shower, 2 Sinks, Toilet, Door to Common Area & BD1
15	Bathroom 2	Main Floor, Shower, 2 sinks, Toilet, Access from hallway
18	Kitchen	Refrig/Freezer with Ice maker, Stove, Oven, Microwave, Dishwasher, Bar Counter, LV
19	Refrigerator/Freezers	1 Extra Large
20	Fireplace or Stove	Indoor Fireplace9, Main Floor
21	Cooling	Dual Central Air, Ceiling Fans, Fans
22	Heating	Dual Central Heat
23	Inside Dining	8 at Table, 3 at Counter
24	Outside Dining	12 at two Tables, 2 at Counter
25	Washer & Dryer	Yes
26	Fast Wi-Fi	Yes (25Mdown 4Mup)
27	TV	4 Smart TVs, DirecTV in Family Room
28	Indoor Games	Board, Card, Dice, Etc.
29	Outdoor Games	Corn Hole
30	Smoking or Vaping?	NO!
31	Car/Truck Parking (without boat)5	3-paved area off the road, 1-on road, 2-sloped driveway
32	Boat or ATV Parking (NO Motorhomes/Sleeping Trailers)	Dedicated Paved Area off the Road
33	Hot Tub	Yes
35	Gas BBQ (Propane Provided)	Yes
36	Heat Lamp (Propane Provided)	Yes
37	Outside Ice Chest (Summer)	Yes
38	Gas Fire Pit (Propane Provided)	Yes
39	Floating Island (Summer)	Shared with Retreat 1, 2, 3, 4, 5, 8, 9, 10 & 17.
40	Kayaks	2 Shared Between R1 & R2
41	Paddle Boards	2 Shared Between R1 & R2
42	Trail/Path to Marina	Yes
43	Lake Access/Trail	Yes
44	Boat Anchoring off shore	Yes
45	Buoy(s) for boats off shore	Yes7
46	Boat Slip at Marina	Sugarloaf Marina is Seasonal, normally open from May 1 to Sept 30. Next door to R1-5, 8-10, 17. Close walk from R6, R7, R12, R15, R18, R19, R20 Slips are \$55/night (2025). Antlers is open earlier and long and have better slips (more protected) and might be less in price. R11, and R16 should use Antlers.
47	House Location	Lakefront, 3rd Home on left of Daisy Dr, Sugarloaf Area of Lakeland. Next door to R1 & R10. Same street as R1, 3, 4, 5, 8, 9, 10, 17. 5-10 min walk to R6, 7, 12, 15, 18, 19, & 20.
48	Distance to Lake (When Full)	30 Feet11
49	Hammocks (Summer)	2
50	Shaded Deck	Yes, LV
51	Unshaded Deck	Yes, LV
52	Pets Allowed4	Yes, Approved only Well Trained Dogs4, \$95 Fee each
53	Reservation Sites14	Our Website (75%), VRBO (10%), Airbnb (15%). Lower cost/fees on our website at https://shastalakeshoreretreat.com/reservations/
54	Minimum Nights	2-7 Nights depending on time of year
56	Kids Stuff?	Port Crib
57	Other (things not mentioned)	Fruit Trees (Deer love), two viewing decks. Trails to Marina and Lake. Play Pin on Request.
58	Stairs/Steps20	1 step & downward slope to main floor (Kit, Fam, Master, Bathrooms, Deck), Stairs to other BRs & Hot Tub
59	2026 Pricing12	~\$374-\$1009 a Night12
60	Fire Safety	Fire Extinguishers on each floor, CO2 Detectors on Each Floor, Smoke Detectors in Bedrooms and Hallways
61	Other	Linens, Bedding, Pillows, Towels, Laundry Soap, Dish Soap, Ice Maker, Coffee Maker (Drip and Single Cup Keurig), Coffee filters, Toaster, Pots/Pans, Plates, Bowls, Glasses, Wine Glasses, Utensils, Board Games, Card Games, Dice, Corn Hole (most), Horse Shoes (some), Salt, Pepper, Some seasonings, Paper Towels*, Toilet Paper*, Air Freshener and Propane*. *Limited Qty, see guidebook for details.

1. BR=Bedroom, 2. LV=Lakeview 3. Stairs=Must take stairs to access. 4. Dogs must be well trained, no medical issues, not left alone in house unless in crate and never on furniture or beds. \$95 fee per pet. 5. If you have a boat/trailer/RV it you will be able to have 2-3 less cars. 7. Warm months as long as not prevented. 8. Sugarloaf Marina offers seasonal daily boat slips to public on first come basis (check if open). 9. Wood or Pellets provided. NO Outdoor fires on property. 10. Can be used throughout the house and on the decks. 11. From back of house to water level when lake is full. Can be several hundred yards if lake is low. Trail provided to water's edge. 12. Plus 10% lodging tax, cleaning fee \$225-\$495, Additional Guests Fees and any VRBO/Airbnb fees if not direct. Lowest price mid week in winter. Highest price weekends in the Summer and holidays. 14. Although there is a electrical hook up you can use if you discuss with us, you can not use to sleep in to increase the max number of guests. 15. No RV Trailers or Motorhomes. 16. Distance to water and view will vary depending on lake level. 17. Planned but ETA not known yet. Inquire. 18. View depends on lake level. 19. Always remember to bring properly fitted life vests with you for children until 12. Difficult to find right size at marina. 20. Please call to discuss concerns about elderly and handicapped access. 21. Use of Kayaks, Paddle Boards, the Floating Island, the Lake, Bikes, BBQ, Fireplace, Firepit, Heat Lamps, Hot Tubs and all other activities are at your own risk. Call us with questions. (Updated 1-20-2026)