



# TOUR OF RETREAT #7

Lake House Vacation Rental  
Shasta Lake, California

Updated: October 22, 2024

Part 2

Please also see Part 1, the Overview Document that goes with this at:

<https://shastalakeshoreretreat.com/Shasta-Lakeshore-Retreat-Info>



# LAKE SHORE RETREAT

## RETREAT #7 (~2600 Square Feet)

- ◆ Luxury at the Lake
- ◆ Short Walk to lake and other homes.
- ◆ Sleeps up to 12, Max of 9 Adults (1 King, 1 queen, Two Bunk Beds, Sleeper Sofa+)
- ◆ 3 Bedrooms, 3 Full Bath, Large Kitchen/Main Family Room
- ◆ Game Room with Pool Table
- ◆ Large deck with BBQ, Gas Fire Pit, Heat Lamp

Flat parking for one boat, sloped driveway for others.







## LAKESHORE RETREAT

SHASTA LAKESHORE RETREAT #7 is our most LUXURIOUS LAKE HOME, sleeps 12 guests and is just across the street from the lake. It is a short walk/drive to the boat ramp & marina. Large, nicely done home with rich looking furniture, wood flooring, high end kitchen located in the highly desired Sugarloaf area of Lakehead. It features 3 large bedrooms & 3 baths plus a large game room with pool table.

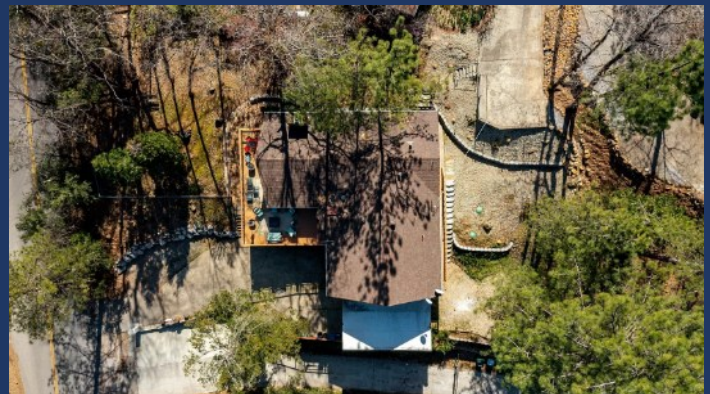


The upper floor is expansive featuring a large kitchen with fine wood cabinets, granite counter tops and brand name appliances. You will be cooking in style at Retreat 7 and will enjoy the large island and additional bar counter that flows into the main living area.



The expansive living area features rich leather couches, a fireplace, high wood ceilings and views out to the large deck for entertaining.





The deck has multiple tables to support your entire group for some great summer BBQs as you look out at the great scenery, wildlife, and lake across the street. Deer can be found in the yard most of the time.





## LAKESHORE RETREAT



The master bedroom features a king bed, multiple large windows, large closet, and a classy large walk-in shower in the adjoining bathroom.



Down the hall is a 2nd bedroom with a queen bed and a full bath across the hallway. Off the kitchen is a laundry room with a large washer and dryer.



## LAKESHORE RETREAT



As you take the stairs down, you quickly see the spacious lower level featuring a large game room, social area and media space. You will enjoy many games of pool after boating.



Along with the pool table/game room, you have a 3rd bedroom with two bunk beds that can sleep at least 4. The Retreat's 3rd full bath is on this level.





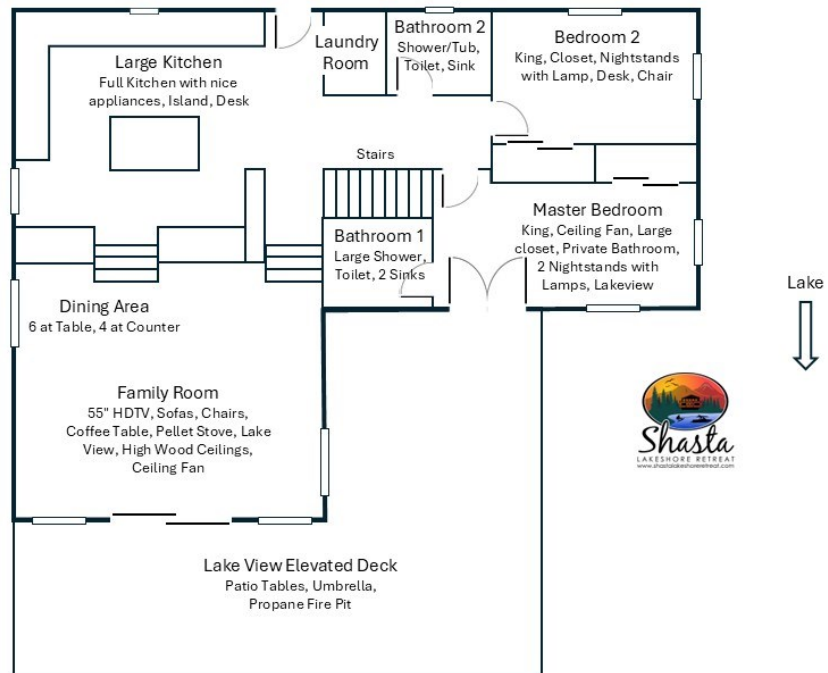
This wonderful home is a short walk/drive from the lake, marina and boat ramp....with a view of the lake through some pine trees. View is impacted by the lake level. The lake is directly across the street.

Good Parking for one boat on a flat surface and space for multiple cars and trucks on a sloped driveway.

Like all our Retreats, this home is fully furnished....just bring your clothes and personal items and enjoy!

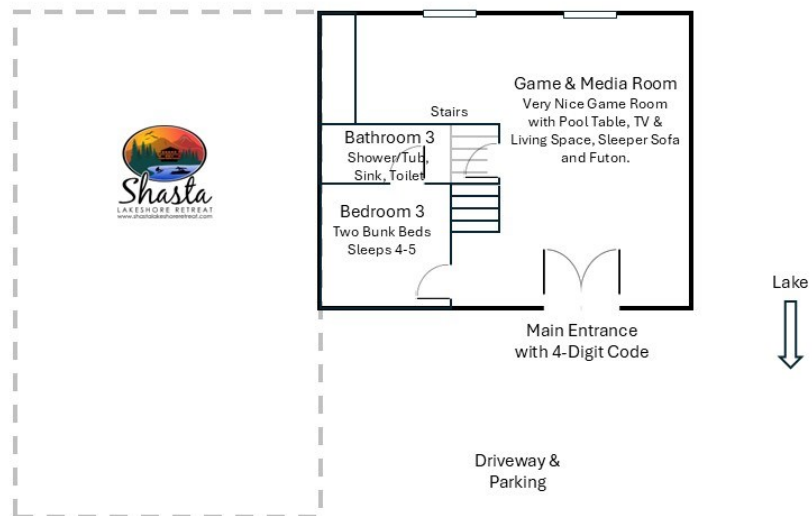


## Retreat 7, Main Upper Floor



Not to Scale, Approximate Drawing

## Retreat 7, Lower Floor



Not to Scale, Approximate Drawing





# LAKE SHORE RETREAT



## Reservations Available on All Three Platforms



- Click on Any Logo -

### Shasta Area Information



### Shasta Lakeshore Retreat Website



### Lake Level



### Availability Calendar



### Reservations





LAKESHORE RETREAT





# LAKE SHORE RETREAT

#	Item	Retreat #7
1	~ Sq. Footage & # of Levels	~2600, 2 Floors, Lakeview
2	MAX. Sleep Number	12 (max # of adults =9)
3	# Bedrooms/Lofts	3
4	Reservations/Stays	Now/Now
5	Bedroom 1 (Master)	King, Main Upper Floor, Ceiling Fan, Large closet, BR Door, 2 Nightstands with Lamps, Private Bathroom, Lakeview
6	Bedroom 2	King, Main Upper floor, Closet, Nightstands with Lamp, Desk, Chair
7	Bedroom 3	Two Bunk Beds, BR door to common bathroom, Downstairs Parking Level Floor
10	Extra Room	Very Nice Game Room with Pool Table, TV and Living Space on Lower Parking Level Floor. Sleeper Sofa and Futon.
11	Family Area (off Kitchen)	55" HDTV, Sofas, Chairs, Coffee Table, Pellet Stove, LV, Upper Floor
12	Extra Bedding	Pull Out Sofa and additional Rollaway
13	# of Full Bathrooms	3
14	Bathroom 1	Main Upper Floor, Large Shower, Toilet, 2 Sinks, Door Master
15	Bathroom 2	Main Floor, Shower/Tub, Toilet, Sink, Common Access
16	Bathroom 3	Shower/Tub, Sink, Toilet
18	Kitchen	High End Kitchen, Refrig/Freezers w/Ice Maker, Stove, Oven, Microwave, Dishwasher, Bar, Island. Main Upper Level.
19	Refrigerator/Freezers	1 Large
20	Fireplace or Stove	Indoor Pellet Stove 9, Main Floor
21	Cooling	Central Air, Ceiling Fans, Fans
22	Heating	Central Heat
23	Inside Dining	6 at Table, 4 at counter
24	Outside Dining	12 at 2 Tables
25	Washer & Dryer	Yes
26	Fast Wi-Fi	Yes (20Mdown 3Mup)
27	TV	2 HDTVs, (Firestick Streaming)
28	Indoor Games	Pool, Board, Card, Dice, Etc.
29	Outdoor Games	Corn Hole, Horse Shoes
30	Smoking or Vaping?	NO!
31	Car/Truck Parking (if no boat)5	4 on sloped driveway and 1 on flat next to driveway
32	Boat or ATV Trailer Parking15	Flat area on right side in front. Room for one.
35	Gas BBQ (Propane Provided)	Yes
36	Heat Lamp (Propane Provided)	Yes
38	Gas Fire Pit (Propane Provided)	Yes
42	Trail/Path to Marina	Short Walk/Drive Via Road, Paths
43	Lake Access/Trail	Short Walk/Drive Via Road, Paths
44	Boat Anchoring off shore	Not ideal. Talk to Lori.
46	Boat Slip at Marina	Sugarloaf Marina is Seasonal, normally open from May 1 to Sept 30. Next door to R1-5, 8-10, 17. Close walk from R6, R7, R12, R15, R18, R19 Slips are \$55/night (2024). Antlers is open earlier and long and have better slips (more protected) and might be less in price. R11, and R16 should use Antlers.
47	House Location	Lakeview18, On Lakeshore Drive, Near entrance to Public Boat Ramp Road, Across the street from Lake. 3 min walk to R6, R12, R15, R198 min to R1-R5, R8-R10,R17.
48	Distance to Lake (When Full)	150 feet11
50	Shaded Deck	Yes, via umbrellas
51	Unshaded Deck	Yes
52	Pets Allowed4	Yes, Approved only Well Trained Dogs4, \$95 (plus tax)
53	Reservation Sites14	Our Website (70%), VRBO (15%), Airbnb (15%). Lower cost/fees on our website at <a href="https://shastalakeshoreretreat.com/reservations/">https://shastalakeshoreretreat.com/reservations/</a>
54	Minimum Nights	2-7 Nights depending on time of year
57	Other (things not mentioned)	Lots of nice refinement throughout including rich wood and kitchen. Deer hangout (lady next door feeds them). Main floor requires stairs.
58	Stairs/Steps20	No steps to lower floor (Game room, bedroom, bath), stairs to main floor.
59	2025 Pricing12	~\$212-\$683+ a Night12
60	Fire Safety	Fire Extinguishers on each floor, CO2 Detectors on Each Floor, Smoke Detectors in Bedrooms and Hallways
61	Other	Linens, Bedding, Pillows, Towels, Laundry Soap, Dish Soap, Ice Maker, Coffee Maker (R4, R8, R14 has Keurig, bring your favorite cups), Coffee filters, Toaster, Pots/Pans, Plates, Bowls, Glasses, Wine Glasses, Utensils, Board Games, Card Games, Dice, Corn Hole, Horse Shoes, Salt, Pepper, Some seasonings, Paper Towels*, Toilet Paper*, Air Freshener and Propane*. *Limited Qty, see welcome book for details.

1. BR=Bedroom, 2. LV=Lakeview 3. Stairs=Must take stairs to access. 4. Dogs must be well trained, no medical issues, not left alone in house unless in crate and never on furniture or beds. \$95 fee per pet. 5. If you have a boat/trailer/RV it you will be able to have 2-3 less cars. 7. Warm months as long as not prevented. 8. Sugarloaf Marina offers seasonal daily boat slips to public on first come basis (check if open). 9. Wood or Pellets provided. NO Outdoor fires on property. 10. Can be used throughout the house and on the decks. 11. From back of house to water level when lake is full. Can be several hundred yards if lake is low. Trail provided to water's edge. 12. Plus 10% lodging tax, cleaning fee \$225-\$495, Additional Guests Fees and any VRBO/Airbnb fees if not direct. Lowest price mid week in winter. Highest price weekends in the Summer and holidays. 14. Although there is a electrical hook up you can use if you discuss with us, you can not use to sleep in to increase the max number of guests. 15. No RV Trailers or Motorhomes. 16. Distance to water and view will vary depending on lake level. 17. Planned but ETA not known yet. Inquire. 18. View depends on lake level. 19. Always remember to bring properly fitted life vests with you for children until 12. Difficult to find right size at marina. 20. Please call to discuss concerns about elderly and handicapped access. 21. New to our collection of homes, replacing a previous Retreat 8. 22 New to our collection of homes, replacing a previous Retreat 17. Call us with questions. (Updated 10-18-2024)

Please also see Part 1, the Overview Brochure that goes with this at:  
<https://shastalakeshoreretreat.com/Shasta-Lakeshore-Retreat-Info>