



TOUR OF RETREAT #12

Lake House Vacation Rental
Shasta Lake, California

Updated: October 22, Part 2

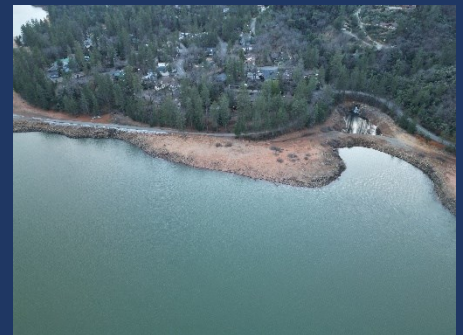
Please also see Part 1, the Overview Brochure that goes with this at:
<https://shastalakeshoreretreat.com/Shasta-Lakeshore-Retreat-Info>



LAKESHORE RETREAT



- ◆ Known as the “Memory Maker”
- ◆ ~2200 Square Feet, Mostly Remodeled in 2021
- ◆ Large Spacious 3 Bedroom, 2 Bath & Big Game Room
- ◆ Sleeps up to 10, Max of 9 Adults (2 Kings, 1 Queen, Two Twins, Sofa)
- ◆ In Popular Sugarloaf area of Lakehead near our other Retreats
- ◆ Short Walk to Marina, Lake, Boat Ramp, and our Other Retreats
- ◆ Forest Setting with two Great Decks providing BBQ, Fire Pit and Hot Tub
- ◆ Central Air Conditioning & Heat
- ◆ Dining Area and Bar





LAKESHORE RETREAT

- Kitchen, Dining Room, and Living Room
- Large 75" HDTV with DirecTV & Blue-Ray Player
- Plenty of Open Seating
- Slider out to Deck which includes Patio Table & BBQ





LAKESHORE RETREAT

◆ Master Bedroom #1

- King Bed, Dresser, Ceiling Fan, Nightstand, Lamp, Closet



◆ Full Bath

- Dual Sinks, Shower/Tub Combo, Toilet
- Off Hallway



◆ Bedroom #2

- Queen Bed, Dresser, Nightstands, Lamp, Ceiling Fan, Closet





LAKESHORE RETREAT

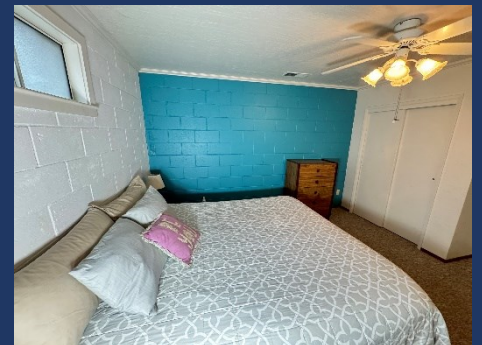
◆ Game Room

- Lower Level
- Slider to Patio
- Ping Pong Table & Foosball
- Two Twin Beds
- Board & Card Games
- 65" HDTV DirectTV & Blue-Ray Player



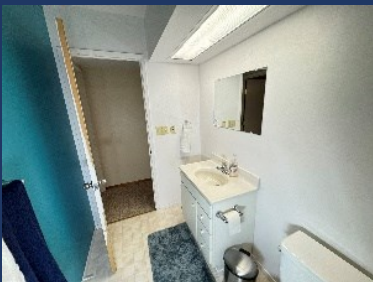
◆ Bedroom #3

- King Bed
- Dresser, Closet, Ceiling Fan



◆ Bathroom #2

- Shower, Sink, Toilet, Door to Common Hallway

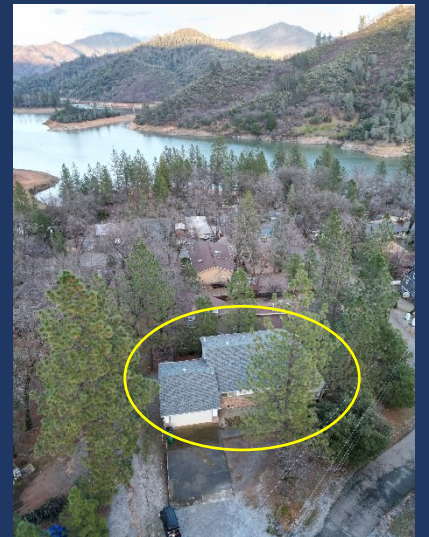




LAKESHORE RETREAT

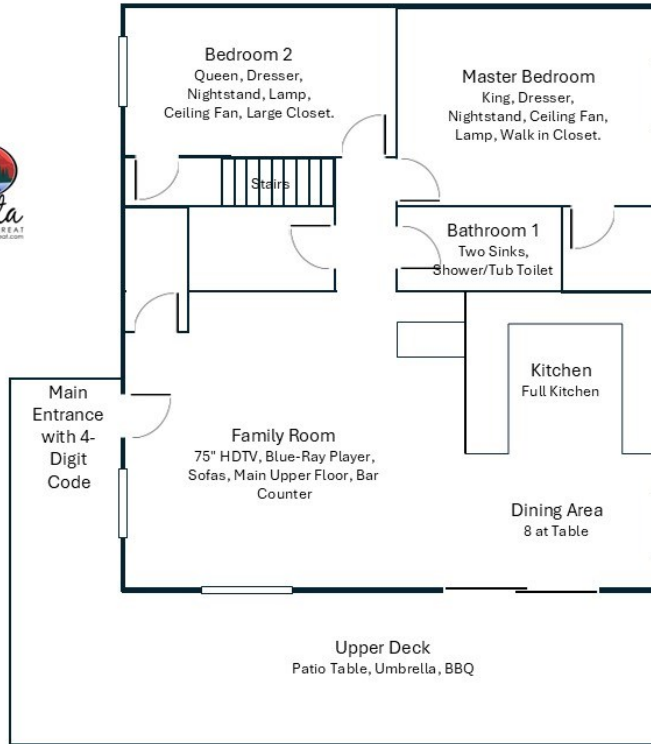
◆ Upper & Lower Decks

- BBQ & Gas Fire Pit
- Hot Tub
- Spacious Area and Property Views



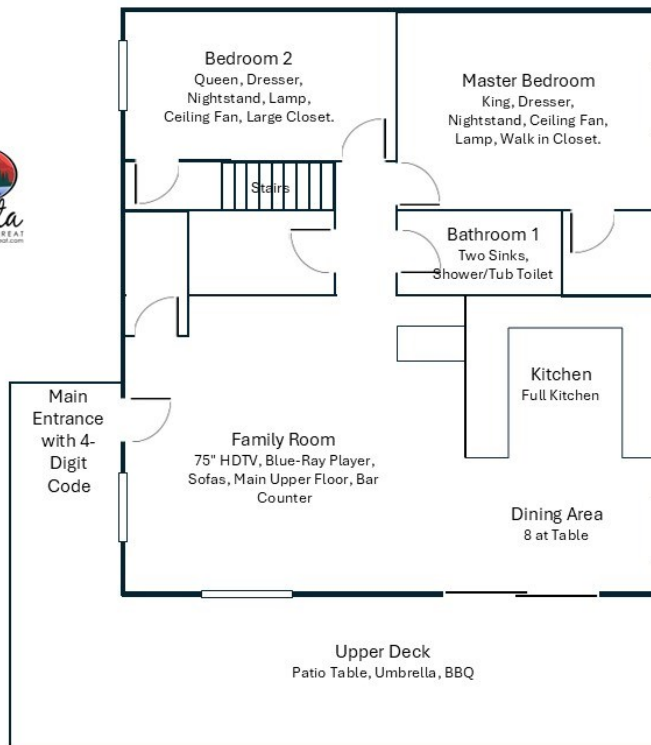


Retreat 12, Main Upper Floor



Not to Scale,
Approximate Drawing

Retreat 12, Main Upper Floor



Not to Scale,
Approximate Drawing



SHASTA LAKESHORE RETREAT



Shasta Area Information



Shasta Lakeshore Retreat Website



Availability Calendar



Reservations



Sugarloaf North Lakehead, CA

Sugarloaf County Public Boat Ramp (When Lake is Lower)





LAKESHORE RETREAT

#	Item	Retreat #12
1	~ Sq. Footage & # of Levels	~2200, 2 Floors, Close to Lake
2	MAX. Sleep Number	10 (max# of adults = 9)
3	# Bedrooms/Lofts	3
4	Reservations/Stays	Now/Now
5	Bedroom 1 (Master)	King, Main Upper Floor, Dresser, Nightstand, Ceiling Fan, Lamp, Walk in Closet.
6	Bedroom 2	Queen, Main Upper Floor, Dresser, Nightstand, Lamp, Ceiling Fan, Large Closet.
7	Bedroom 3	King, Lower Floor, Dresser, Night Stand, Lamp, Ceiling Fan, Closet
10	Extra Room	Large Game Room; 65" HDTV, Blue-Ray Player, Ping Pong Table, Foosball Table, Two Sofas, Two Twin Beds
11	Family Area (off Kitchen)	75" HDTV, Blue-Ray Player, Sofas, Main Upper Floor, Bar Counter
13	# of Full Bathrooms	2
14	Bathroom 1	Main Upper Floor, Two Sinks, Shower/Tub combo, Toilet, off hallway.
15	Bathroom 2	Lower Floor, Sink, Shower, Toilet, off hallway
18	Kitchen	Refrig/Freezers with ice cube trays. Stove, Microwave, Dishwasher, Oven, Upper Main Floor.
19	Refrigerator/Freezers	1 Large
21	Cooling	Central Air, Ceiling Fans
22	Heating	Central Heat
23	Inside Dining	6 at Table, 2 Bar Stools
24	Outside Dining	8 (Pic Table on Up Deck, 4(table) Low Deck
25	Washer & Dryer	Yes
26	Fast Wi-Fi	Yes (20Mdown 3Mup)
27	TV	2 HDTVs (DirectTV), 65", 75"
28	Indoor Games	Board, Cards, Ping Pong, Foosball
30	Smoking or Vaping?	NO!
31	Car/Truck Parking (without boat)5	Up to 4 cars plus boat.
32	Boat or ATV Trailer Parking15	Flat by road in front of house.
33	Hot Tub	Yes, Lower Level
35	Gas BBQ (Propane Provided)	Yes
38	Gas Fire Pit (Propane Provided)	Yes
40	Kayaks	
41	Paddle Boards	
42	Trail/Path to Marina	Short Walk/Drive Via Road, Paths
43	Lake Access/Trail	Short Walk/Drive Via Road, Paths
46	Boat Slip at Marina	Sugarloaf Marina is Seasonal, normally open from May 1 to Sept 30. Next door to R1-5, 8-10, 17. Close walk from R6, R7, R12, R15, R18, R19 Slips are \$55/night (2024). Antlers is open earlier and long and have better slips (more protected) and might be less in price. R11, and R16 should use Antlers.
47	House Location	Sugarloaf area of Lakehead, with a 5 min walk to lake and marina. Short walk to all other retreats excepts #11, #14 & #16. Closest to Retreat 6, 7 and 15.
48	Distance to Lake (When Full)	~300 yards
50	Shaded Deck	Yes, Lower Level
51	Unshaded Deck	Yes, Upper Level
52	Pets Allowed4	Yes, Approved only Well Trained Dogs4, \$95 (plus tax)
53	Reservation Sites14	Our Website (70%), VRBO (15%), Airbnb (15%). Lower cost/fees on our website at https://shastalakeshoreretreat.com/reservations/
54	Minimum Nights	2-7 Nights depending on time of year
56	Kids Stuff?	Pack & Play High Chair, Some Toys
57	Other (things not mentioned)	All rooms are very spacious, nice neighborhood. Wheelchair ramp through garage into house. Some Toys for kids available.
58	Stairs/Steps20	~5 steps to front door. No stairs if via garage on wheelchair ramp.
59	2025 Pricing12	\$154 to \$536 Per Night
60	Fire Safety	Fire Extinguishers on each floor, CO2 Detectors on Each Floor, Smoke Detectors in Bedrooms and Hallways
61	Other	Linens, Bedding, Pillows, Towels, Laundry Soap, Dish Soap, Ice Maker, Coffee Maker (R4, R8, R14 has Keurig, bring your favorite cups), Coffee filters, Toaster, Pots/Pans, Plates, Bowls, Glasses, Wine Glasses, Utensils, Board Games, Card Games, Dice, Corn Hole, Horse Shoes, Salt, Pepper, Some seasonings, Paper Towels*, Toilet Paper*, Air Freshener and Propane*. *Limited Qty, see welcome book for details.

1. BR=Bedroom, 2. LV=Lakeview 3. Stairs=Must take stairs to access. 4. Dogs must be well trained, no medical issues, not left alone in house unless in crate and never on furniture or beds. \$95 fee per pet. 5. If you have a boat/trailer/RV it will be able to have 2-3 less cars. 7. Warm months as long as not prevented. 8. Sugarloaf Marina offers seasonal daily boat slips to public on first come basis (check if open). 9. Wood or Pellets provided. NO Outdoor fires on property. 10. Can be used throughout the house and on the decks. 11. From back of house to water level when lake is full. Can be several hundred yards if lake is low. Trail provided to water's edge. 12. Plus 10% lodging tax, cleaning fee \$225-\$495, Additional Guests Fees and any VRBO/Airbnb fees if not direct. Lowest price mid week in winter. Highest price weekends in the Summer and holidays. 14. Although there is a electrical hook up you can use if you discuss with us, you can not use to sleep in to increase the max number of guests. 15. No RV Trailers or Motorhomes. 16. Distance to water and view will vary depending on lake level. 17. Planned but ETA not known yet. Inquire. 18. View depends on lake level. 19. Always remember to bring properly fitted life vests with you for children until 12. Difficult to find right size at marina. 20. Please call to discuss concerns about elderly and handicapped access. 21. New to our collection of homes, replacing a previous Retreat 8. 22 New to our collection of homes, replacing a previous Retreat 17. Call us with questions. (Updated 10-19-2024)

Reservations Available on All Three Platforms



- Click on Any Logo -